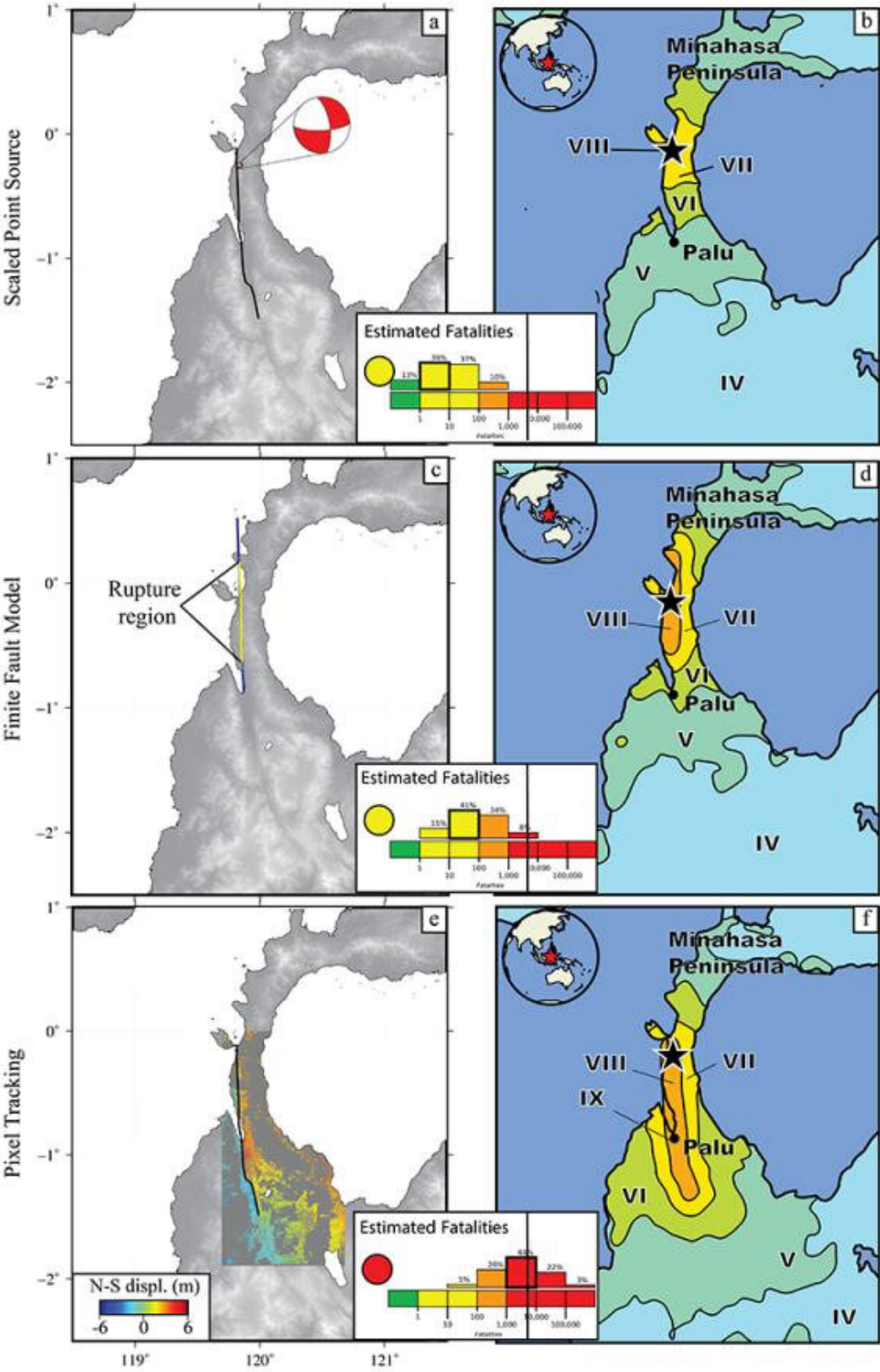


Satellite observations improve earthquake monitoring, response

June 14 2019, by Richard C. Lewis



The evolution of earthquake response products that detail the expected number of fatalities for the 2018 Indonesia earthquake. The first two rows show the estimates based on seismology approaches, and the third row shows the estimates based on satellite observations. The histograms show predicted numbers of fatalities with the vertical bar indicating the actual number of fatalities. The satellite observations capture this number accurately, while the seismological observations systematically under predicted the number. Credit: UI Department of Earth and Environmental Sciences.

Researchers at the University of Iowa and the U.S. Geological Survey have found that data gathered from orbiting satellites can provide more accurate information on the impact of large earthquakes, which, in turn, can help provide more effective emergency response.

The [satellite imagery](#) provides detailed information about where the earthquakes occurred, how big the surface deformation was, and where the earthquakes occurred relative to population centers, typically within two to three days of the earthquake. This information was then incorporated into a set of operational response guides managed by the USGS National Earthquake Information Center (NEIC) that is distributed to [decision makers](#), search and rescue operations, and other groups.

In the paper published online June 6 in the journal *Remote Sensing*, the researchers determined that the satellite imagery gathered from each earthquake provided new information, which improved the analysis of its impact.

"This, in turn, led to more accurate estimates of the numbers of fatalities and economic losses that are critical to more accurately determine in the

days and weeks following devastating earthquakes," says Bill Barnhart, assistant professor in the Department of Earth and Environmental Sciences at the UI and a lead author on the study.

Mainstays in determining an earthquake's impact are ground-based seismometers that measure seismic activity around the world. But these instruments are not located everywhere, which can lead to incomplete information about the effects of some earthquakes in the critical time immediately after they occur. Moreover, some quakes are more complex and can't be measured precisely by seismometers alone.

Increasingly, earthquake specialists are turning to geodetic methods—the math-based study of changes in the Earth's shape—that use satellites and other instruments to complement data gathered by seismometers.

"While this is not yet a fully operational system, we are working with the USGS to make operational earthquake response with satellite imagery a systematic component of the NEIC's global earthquake monitoring and response efforts," Barnhart says.

One example is the work done by Emma Mankin, a UI senior and geoscience major who will graduate in December. Mankin processed radar imagery, or interferograms, from a 6.9 magnitude quake that struck Indonesia in August 2018. She then used this imagery to produce a model of the earthquake and where it was located. The USGS used this model directly to update its predictions of ground shaking and earthquake impact that were incorporated into its disaster-response systems.

"Emma's rapid work on the Indonesia earthquake directly contributed to the operational analysis of a global earthquake," Barnhart says. "Her contributions improved [earthquake](#) impact estimates for that event and helped to further demonstrate that these [satellite](#) approaches can provide

actionable [information](#) that benefits society."

The paper is titled, "Global Earthquake Response with Imaging Geodesy: Recent Examples from the USGS NEIC." It published online June 6 in the journal *Remote Sensing*.

More information: William D. Barnhart et al, Global Earthquake Response with Imaging Geodesy: Recent Examples from the USGS NEIC, *Remote Sensing* (2019). [DOI: 10.3390/rs11111357](https://doi.org/10.3390/rs11111357)

Provided by University of Iowa

Citation: Satellite observations improve earthquake monitoring, response (2019, June 14)
retrieved 23 April 2024 from <https://phys.org/news/2019-06-satellite-earthquake-response.html>

This document is subject to copyright. Apart from any fair dealing for the purpose of private study or research, no part may be reproduced without the written permission. The content is provided for information purposes only.