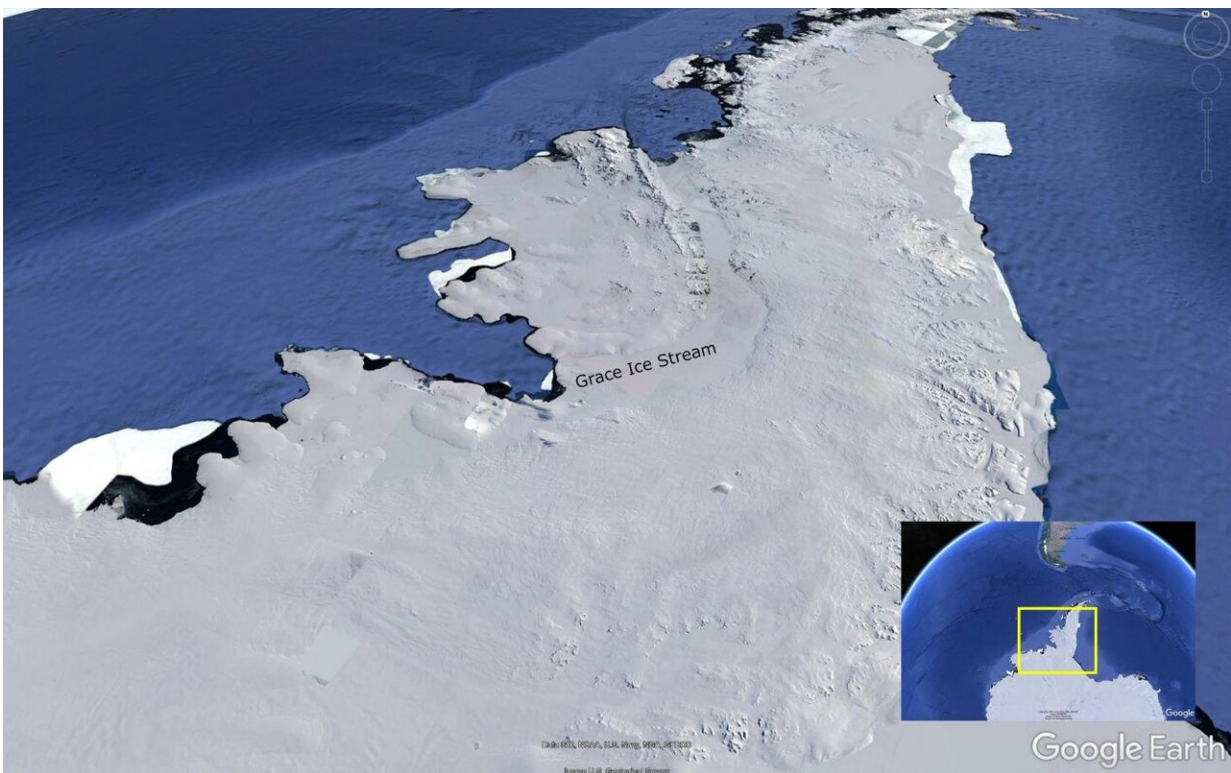


# Antarctic glacier named after GFZ satellite mission 'GRACE'

June 7 2019



The newly named Antarctic glacier "Grace Ice Stream." Credit: GoogleEarth.

A glacier in the West Antarctic has been named after the German-American satellite mission GRACE. GRACE stands for "Gravity Recovery and Climate Experiment." Between 2002 and 2017, the scientific mission measured the Earth's gravity field, from which

conclusions can be drawn about the growth and melting of glaciers.

The British Antarctic Survey has now published a map in which seven glaciers were named after satellite missions whose data made a decisive contribution to the exploration of ice mass changes. In addition to GRACE, for example, Landsat, Envisat and Cryosat were also eponymous. The scientific evaluation of the GRACE mission was led by GFZ German Research Centre for Geosciences and the US Space Agency NASA.

Frank Flechtner, scientific director of the GRACE mission at GFZ: "I am very pleased that a glacier has been named after the GRACE which is a very special honor of the pioneering successes of the mission."

Reinhard Hüttl, GFZ Scientific Executive Director: "This is a great appreciation of the work of our scientists, which is now even manifested in official maps".

The newly named glaciers are located in Western Palmer Land, next to the George VI Ice Shelf. The name is based on a work by the British scientist Anna E. Hogg from 2017. The polar researcher had demonstrated the acceleration of ice movements in the British part of Antarctica using numerous satellite data. Until now, the glaciers she studied were only called by numbers, not names.

The UK Antarctic Place-Names Committee of the British Antarctic Survey decided on the naming in November 2018, which has now been confirmed by the British Foreign Office and will be officially announced this Friday by the Polar Space Task Group of the European Space Agency ESA. After the names have already been included in the British Antarctic Territory Gazetteer, an inclusion in the Scientific Committee on Antarctic Research (SCAR) Composite Gazetteer of Antarctica is in process. The names will be used in all official maps, graphics, and

publications in the future.

The GRACE data not only resulted in an improved representation of the Earth's gravity field known as the "Potsdam Gravity Potato," but also in numerous new insights into temporal changes in the Earth system, including the ice mass loss of the large ice sheets over Greenland and Antarctica. After the GRACE mission ended in 2017 after 15 years of service, the follow-up [mission](#) GRACE-FO (for "Gravity Recovery and Climate Experiment Follow-On") was launched in May 2018 and has been successfully continuing the measurements ever since.

Provided by GFZ GeoForschungsZentrum Potsdam, Helmholtz Centre

Citation: Antarctic glacier named after GFZ satellite mission 'GRACE' (2019, June 7) retrieved 16 May 2024 from <https://phys.org/news/2019-06-antarctic-glacier-gfz-satellite-mission.html>

This document is subject to copyright. Apart from any fair dealing for the purpose of private study or research, no part may be reproduced without the written permission. The content is provided for information purposes only.