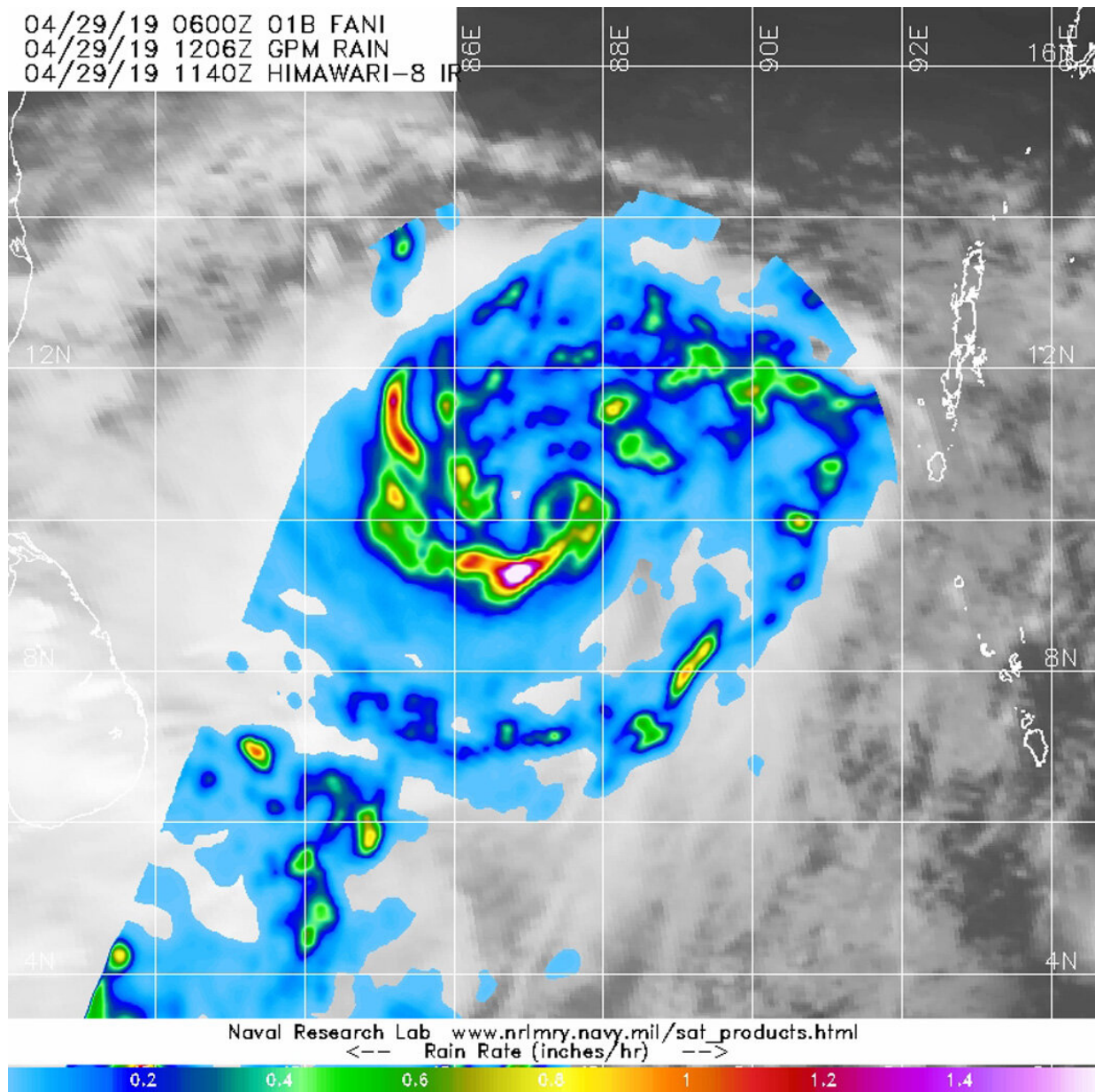


NASA looks at Tropical Storm Fani's rainfall rates

April 29 2019



The GPM core satellite passed over Tropical Storm Fani at 8:06 a.m. EDT (1206 UTC) on April 29, 2019. GPM found the heaviest rainfall (pink) was in an area south of the center of circulation. There rain was falling at a rate of about 1.6 inches (40 mm) per hour. Rainfall was occurring at rate around 1 inch (25 mm) per hour in bands of thunderstorms circling the center. Credit: NASA/JAXA/NRL

Tropical Storm Fani formed in the Northern Indian Ocean over the weekend of April 27 and 28. The Global Precipitation Measurement mission or GPM core satellite passed over the storm and measured rainfall occurring throughout the new storm.

GPM's core satellite flew over Tropical Cyclone Fani at 8:06 a.m. EDT (1206 UTC) on April 29 and found the heaviest rainfall was in an area south of the center of circulation. There rain was falling at a rate of about 1.6 inches (40 mm) per hour. Rainfall was occurring at rate around 1 inch (25 mm) per hour in bands of thunderstorms circling the center. GPM is a joint mission between NASA and the Japan Aerospace Exploration Agency, JAXA.

The Joint Typhoon Warning Center noted, "Animated enhanced [infrared satellite imagery](#) reveals significant consolidation in the convective structure and a better idea of the location of the low level circulation center. There is high confidence in the initial position based on an eye feature in a microwave satellite image."

At 11 a.m. EDT (1500 UTC), the [center](#) of Tropical Cyclone Fani had maximum sustained winds near 55 knots (63 mph/102 kph). Fani was located near latitude 10.5 degrees north and longitude 86.6 degrees east. That is about 420 nautical miles east-southeast of Chennai, India. Fani is moving to the northwest and is forecast to intensify to hurricane

strength.

Fani is forecast to make landfall in northeastern India on May 3.

Provided by NASA's Goddard Space Flight Center

Citation: NASA looks at Tropical Storm Fani's rainfall rates (2019, April 29) retrieved 24 April 2024 from <https://phys.org/news/2019-04-nasa-tropical-storm-fani-rainfall.html>

This document is subject to copyright. Apart from any fair dealing for the purpose of private study or research, no part may be reproduced without the written permission. The content is provided for information purposes only.