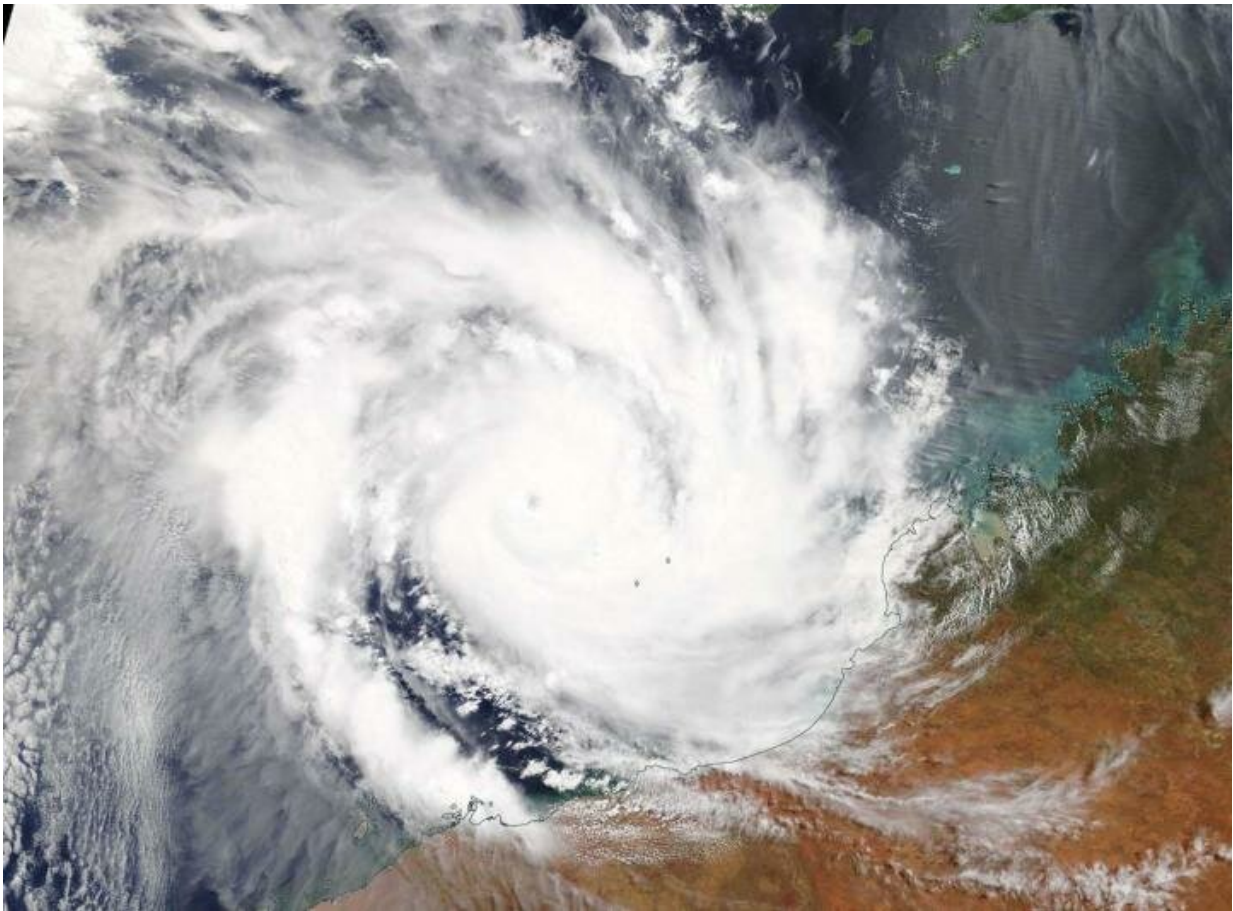


# NASA sees Tropical Cyclone Veronica affecting Australia's Pilbara Coast

March 21 2019

---



On March 21, 2019, the MODIS instrument aboard NASA's Terra satellite provided a visible image of Tropical Cyclone Veronica in the Southern Indian Ocean, and affecting the Pilbara coast of Western Australia. Credit: NASA Worldview, Earth Observing System Data and Information System (EOSDIS)

Visible imagery from NASA's Terra satellite showed Tropical Cyclone Veronica skirting the Pilbara coast of Western Australia.

On March 21 the Moderate Resolution Imaging Spectroradiometer or MODIS instrument aboard NASA's Terra satellite provided a visible image of Veronica. Veronica had a 10 nautical mile wide pinhole eye surrounded by powerful thunderstorms. Bands of thunderstorms spiraled into the center of circulation from the northwest and east. Veronica's southeastern quadrant was spreading clouds along the Pilbara coastline of northern Western Australia.

The Australian Bureau of Meteorology or ABM updated warnings and watches on March 21, 2019. The Warning zone stretches from Pardoo to Mardie including Port Hedland, Karratha and Barrow Island. The Watch zone stretches from Pardoo to Wallal Downs, Mardie to Onslow and extending to the inland Pilbara to include Pannawonica, Tom Price and Marble Bar.

At 8:48 a.m. EDT (8:48 p.m. AWST Australian Western Standard Time) on March 21, 2019, maximum sustained winds near Veronica's center were near 121 miles (195 kilometers) per hour. Veronica was centered near 17.3 degrees south latitude and 117.3 degrees east longitude. That's about 223 miles (360 kilometers) north-northwest of Port Hedland and 239 miles (385 kilometers) north of Karratha.

AMB noted in that advisory, "Severe Tropical Cyclone Veronica, a Category 4 system, is moving slowly towards the Pilbara coast. The [cyclone](#) should continue its south to southwest track tonight and Friday before taking a more south southeast track on Saturday. Whilst it is possible that the cyclone may weaken before reaching the Pilbara coast, a severe coastal impact is likely."

ABM forecasts Veronica to move in a southerly direction and make

landfall on March 24, near Whim Creek. Whim Creek is located between Port Hedland to the northeast and Exmouth to the southwest.

Provided by NASA's Goddard Space Flight Center

Citation: NASA sees Tropical Cyclone Veronica affecting Australia's Pilbara Coast (2019, March 21) retrieved 6 May 2024 from <https://phys.org/news/2019-03-nasa-tropical-cyclone-veronica-affecting.html>

This document is subject to copyright. Apart from any fair dealing for the purpose of private study or research, no part may be reproduced without the written permission. The content is provided for information purposes only.