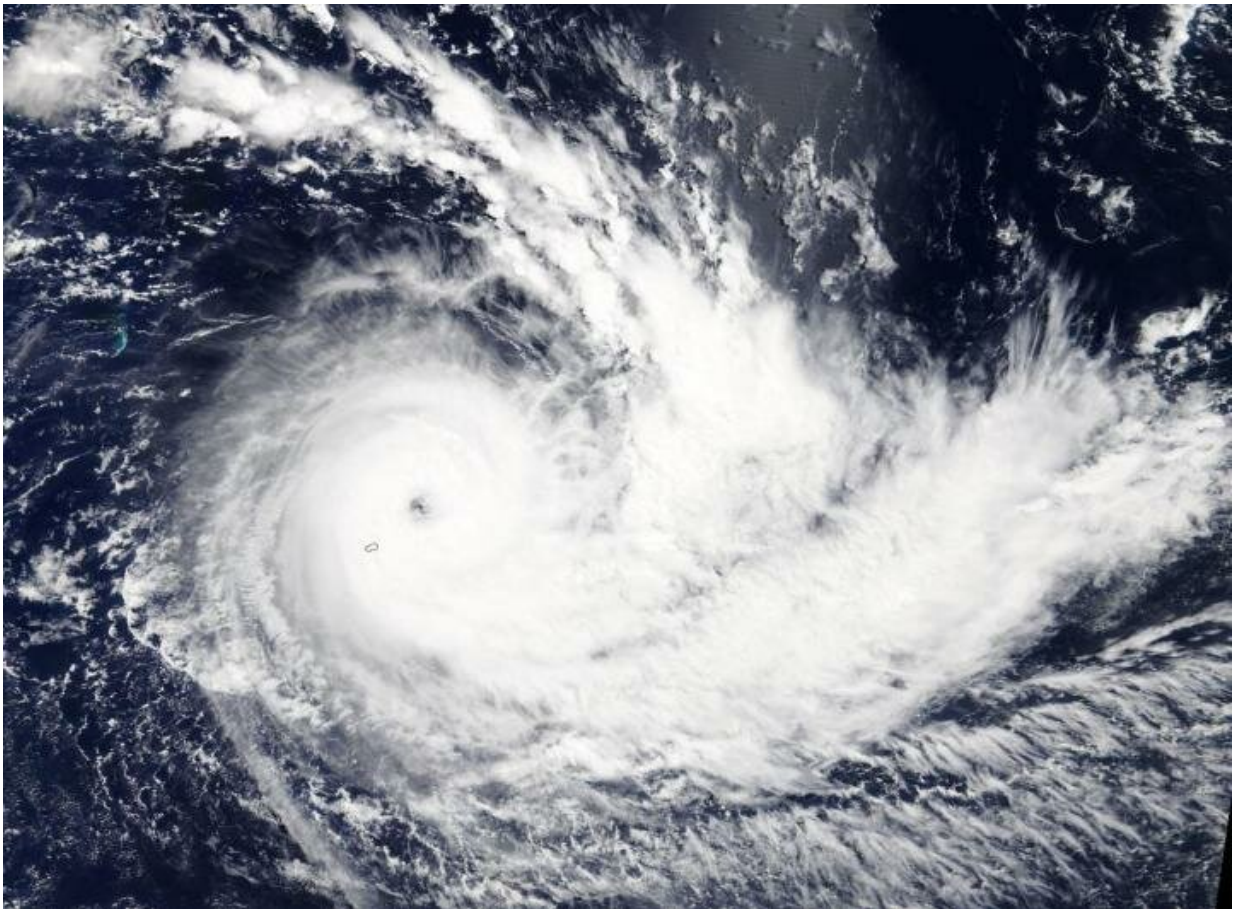


NASA sees Tropical Cyclone Joaquina affecting Mauritius

March 26 2019



On March 26, 2019, the MODIS instrument aboard NASA's Terra satellite provided a visible image of Tropical Cyclone Joaquina in the Southern Indian Ocean. Credit: NASA Worldview, Earth Observing System Data and Information System (EOSDIS)

Visible imagery from NASA's Terra satellite showed Tropical Cyclone Joania as it moved through the Southern Indian Ocean triggering warnings in the island nation of Mauritius.

Mauritius is an island nation, known for its beaches, lagoons and reefs. It is located to the northeast of Reunion Island.

The Mauritius Meteorological Services (MMS) issued several warnings on Joania. On March 26 a Strong [wind](#) and High Wave [warning](#) were in effect for Rodrigues valid until 10 a.m. local time on Wednesday, March 27, 2019.

MMS noted "The intense tropical cyclone Joania evolving to the east of Rodrigues is causing strong southerly winds to blow over the island. Gusts may reach 100 kph (62mph) in places. The cyclone is also generating heavy swells of the order of 5 to 7 meters (16 to 23 feet) which are influencing the sea state around Rodrigues. Also storm surge will cause a rise in the sea water level of about 1.5 meters (5 feet) above the normal tides which will result in the inundation of low lying [coastal areas](#) particularly to the east, south and south-west."

On March 26, 2019, the Moderate Resolution Imaging Spectroradiometer or MODIS instrument aboard NASA's Terra satellite provided a visible image of Joania. Joania had a 15 nautical-mile wide eye surrounded by powerful thunderstorms. Bands of thunderstorms spiraled into the center of circulation from the eastern quadrant.

On March 26 at 8 a.m. EDT (1200 UTC) Joania had maximum sustained winds near 115 knots (132 mph/213 kph). Joania was centered near 19.6 degrees south latitude and 65.2 degrees east longitude. That's about 86 nautical miles (99 miles/ 159 km) east of Port Mathurin, Mauritius

Joaninha is moving through an area of warm waters, which will continue to fuel it. The Joint Typhoon Warning Center noted that the [wind shear](#), outside winds that can affect a storm at different altitudes, was light, so it will not affect the storm on its track to the south for the next day or two.

More information: For local updates from the MMS, visit:
<http://metSERVICE.intnet.mu>

Provided by NASA's Goddard Space Flight Center

Citation: NASA sees Tropical Cyclone Joaninha affecting Mauritius (2019, March 26) retrieved 26 June 2024 from <https://phys.org/news/2019-03-nasa-tropical-cyclone-joaninha-affecting.html>

<p>This document is subject to copyright. Apart from any fair dealing for the purpose of private study or research, no part may be reproduced without the written permission. The content is provided for information purposes only.</p>
--