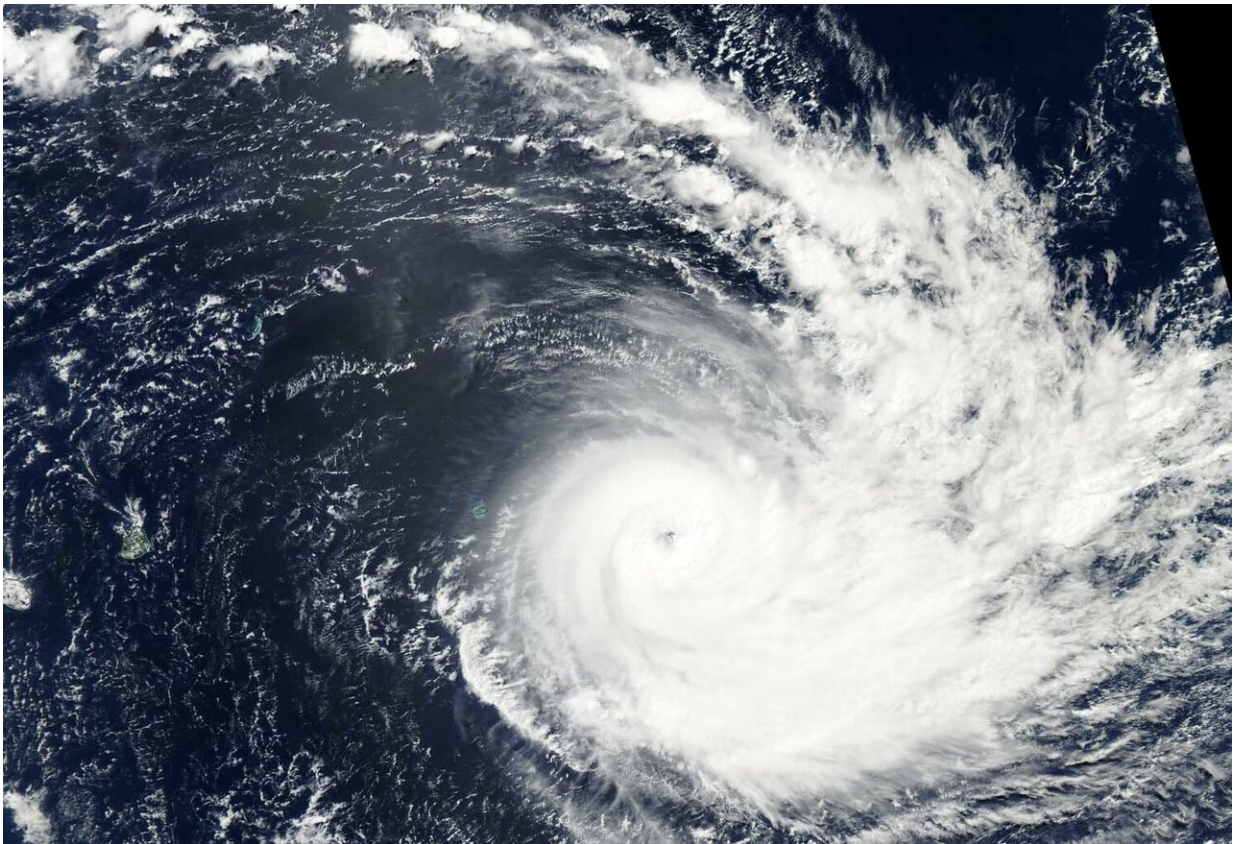


NASA's Aqua Satellite keeps an 'eye' on Tropical Cyclone Joania

March 27 2019



On March 27, 2019, the MODIS instrument aboard NASA's Aqua satellite provided a visible image of Tropical Cyclone Joania moving through the central Southern Indian Ocean. Joania maintained a 15 nautical-mile wide eye. Credit: NASA Worldview, Earth Observing System Data and Information System (EOSDIS)

Visible imagery from NASA's Aqua satellite showed a visible eye remained in Tropical Cyclone Joania as it continued moving through the central Southern Indian Ocean.

On March 27, 2019 the Moderate Resolution Imaging Spectroradiometer or MODIS instrument aboard NASA's Aqua satellite provided a visible image of Joania. Joania maintained its eye, and the eye was surrounded by powerful thunderstorms. Bands of thunderstorms spiraled into the center of circulation from the east.

The Joint Typhoon Warning Center or JTWC noted that animated multispectral satellite imagery showed that the ragged eye was 15 nautical miles in diameter.

At 11 a.m. EDT (1500 UTC) Tropical Cyclone Joania's maximum sustained winds were near 110 knots (126 mph/204 kph). It was centered near 20.5 degrees south latitude and 67.0 degrees east longitude. That's approximately 199 nautical miles (229 miles/369 km) east of Port Mathurin, Mauritius. Joania was moving to the east and is forecast to turn in a more southerly direction and begin weakening.

The Mauritius Meteorological Services (MMS) noted that there is still an active warning for Rodrigues. A High Wave warning remains in effect for Rodrigues until 10 a.m. local time on Friday, March 29. MMS's [warning](#) noted "The intense Tropical Cyclone Joania is generating heavy swells of the order of 5 meters [16 feet] which are influencing the sea state around Rodrigues. Also storm surge will cause a rise in the sea water level of about 1.0 meters [3.2 feet] above the normal tides which will result in the inundation of low lying coastal areas particularly to the east, south and south-west."

MMS strongly advised for fishermen, boaters and the public not to go out at sea and not to venture on the beaches until they are given the "all

clear" from local authorities.

Joaninha is forecast to transition into a subtropical [cyclone](#) over the next several days.

More information: For updated forecasts from the Mauritius Meteorological Services, visit: metservice.intnet.mu/

Provided by NASA's Goddard Space Flight Center

Citation: NASA's Aqua Satellite keeps an 'eye' on Tropical Cyclone Joaninha (2019, March 27)
retrieved 25 April 2024 from

<https://phys.org/news/2019-03-nasa-aqua-satellite-eye-tropical.html>

<p>This document is subject to copyright. Apart from any fair dealing for the purpose of private study or research, no part may be reproduced without the written permission. The content is provided for information purposes only.</p>
--