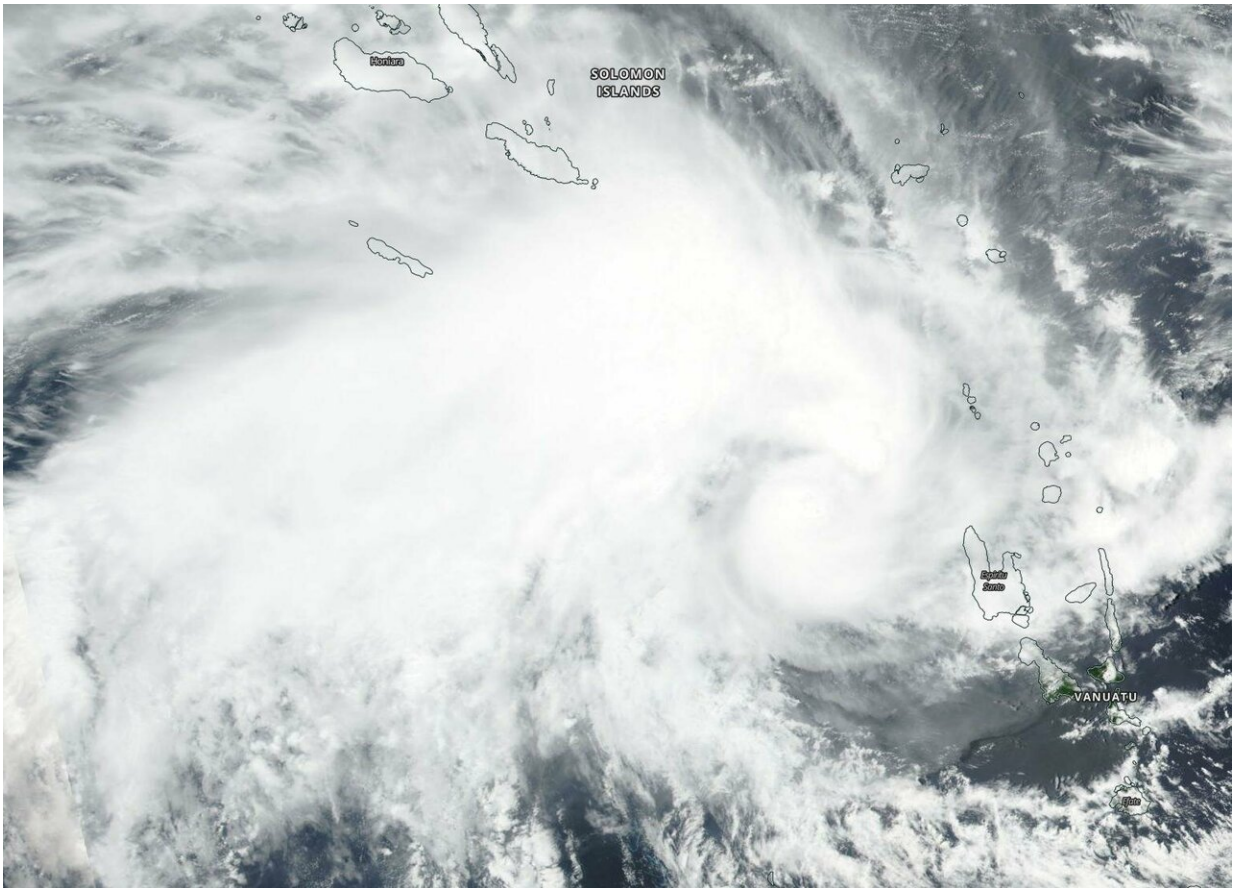


Tropical Cyclone Oma threatens Vanuatu, seen by Suomi NPP satellite

February 13 2019



NASA-NOAA's Suomi NPP satellite passed over the Southern Pacific Ocean and captured a visible image of Tropical Cyclone Oma on Feb. 13 as it approached Vanuatu. Credit: NASA Worldview, EARTH Observing System Data and Information System (EOSDIS).

Tropical Cyclone Oma continued to move southeast in the Southern Pacific Ocean, and continue affecting Vanuatu. NASA-NOAA's Suomi NPP satellite provided a visible image of the storm.

Suomi NPP passed over Oma on Feb. 13 and the Visible Infrared Imaging Radiometer Suite (VIIRS) instrument provided a visible image of the [storm](#). The VIIRS image showed a circular center of thunderstorms with a large, wide band of thunderstorms wrapping into the center from the northwest. That's because the storm is experiencing easterly winds that are pushing clouds west and away from the center. The image also showed the southeastern quadrant already over Espiritu Santo, Vanuatu.

The Joint Typhoon Warning Center (JTWC) noted on Feb. 13 at 4 a.m. EDT (0900 UTC) that Oma was near 14.6 degrees south latitude and 165.2 east longitude, about 262 nautical miles northwest of Port Vila, Vanuatu. Maximum sustained winds were near 45 knots (52 mph/83 kph). Oma was moving to the west-southwest.

On Feb. 13, Tropical Cyclone Warning Number 9 was issued by the Vanuatu Meteorology and Geo-Hazards Department (VMGD), in Port Vila, Vanuatu for Torba, Sanma and Malampa provinces. Gale force winds are expected to affect those provinces today, Feb. 13. VMGD's [warning](#) noted "Heavy rainfalls and flash flooding over low lying areas and areas close to the river banks, including [coastal flooding](#) will continue to affect Torba, Sanma and Malampa provinces tonight. Seas will be very rough to phenomenal with heavy and phenomenal swells expected."

Forecasters at the Joint Typhoon Warning Center noted that Oma is expected to strengthen over the next day as it begins curving to the south. By February 15, as Oma takes more of a southwesterly turn and heads away from Vanuatu and toward northern New Caledonia, increasing

[wind shear](#) and movement over cooler waters will weaken the storm.

For updated local forecasts from VMGD, visit:

<https://www.vmgd.gov.vu/>

Provided by NASA's Goddard Space Flight Center

Citation: Tropical Cyclone Oma threatens Vanuatu, seen by Suomi NPP satellite (2019, February 13) retrieved 25 April 2024 from <https://phys.org/news/2019-02-tropical-cyclone-oma-threatens-vanuatu.html>

This document is subject to copyright. Apart from any fair dealing for the purpose of private study or research, no part may be reproduced without the written permission. The content is provided for information purposes only.