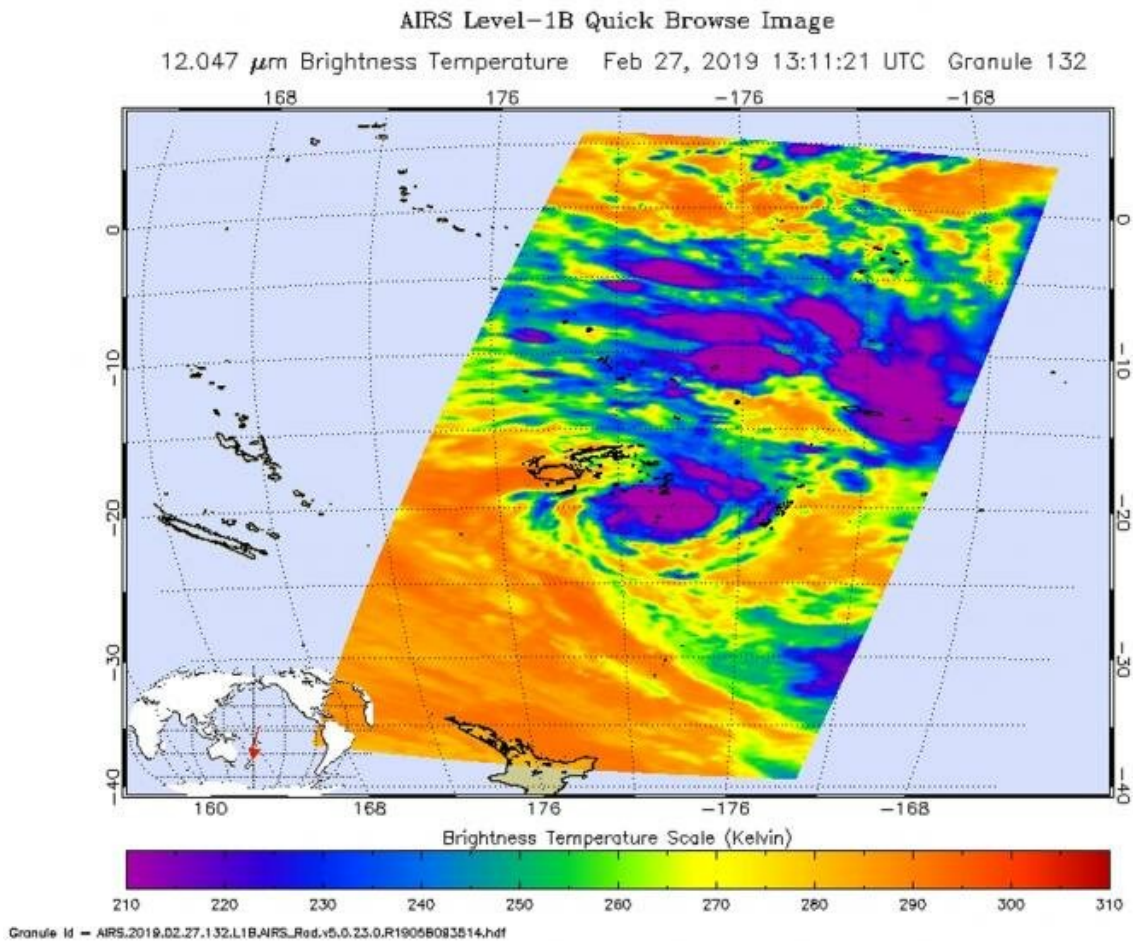


# NASA catches Tropical Cyclone Pola near Fiji

February 27 2019



On Feb. 27, 2018 at 8:11 p.m. EDT (1311 UTC) the AIRS instrument aboard NASA's Aqua satellite analyzed cloud top temperatures of Tropical Cyclone Pola in infrared light. AIRS found cloud top temperatures of strongest thunderstorms were as cold as or colder than minus 63 degrees Fahrenheit (minus 53 degrees Celsius). Credit: NASA JPL/Heidar Thrastarson

Tropical Cyclone Pola was passing near the Southern Pacific country of Fiji when NASA's Aqua satellite analyzed the storm in infrared light and found it strengthening.

On Feb. 27 at 8:11 p.m. EDT (1311 UTC) the Atmospheric Infrared Sounder or AIRS instrument aboard NASA's Aqua satellite analyzed cloud top temperatures of Tropical Cyclone Pola in [infrared light](#). AIRS found cloud top temperatures were getting colder. Colder cloud tops mean the uplift of air in the storm is strengthening and pushing the cloud tops higher. It's an indication of a strengthening storm.

Strongest thunderstorms as cold as or colder than minus 63 degrees Fahrenheit (minus 53 degrees Celsius) circling the center. Enhanced [infrared satellite imagery](#) shows deep and persistent convection continues to wrap around the low level circulation center. Cloud top temperatures that cold indicate strong storms that have the capability to create heavy rain. Microwave imagery revealed a partial eye developing.

On Feb. 21 at 10 a.m. EST (1500 UTC), the center of Tropical Cyclone Pola was located near latitude 21.0 degrees south and longitude 178.0 degrees west. That puts the center of Pola between Fiji and Tonga and about 258 nautical miles southeast of Suva, Fiji. Pola was moving to the south-southwest. Maximum sustained winds were near 75 knots (86 mph/139 kph). The Joint Typhoon Warning Center expects Pola to strengthen in the next day before slow weakening begins.

Provided by NASA's Goddard Space Flight Center

Citation: NASA catches Tropical Cyclone Pola near Fiji (2019, February 27) retrieved 11 September 2024 from <https://phys.org/news/2019-02-nasa-tropical-cyclone-pola-fiji.html>

This document is subject to copyright. Apart from any fair dealing for the purpose of private study or research, no part may be reproduced without the written permission. The content is provided for information purposes only.