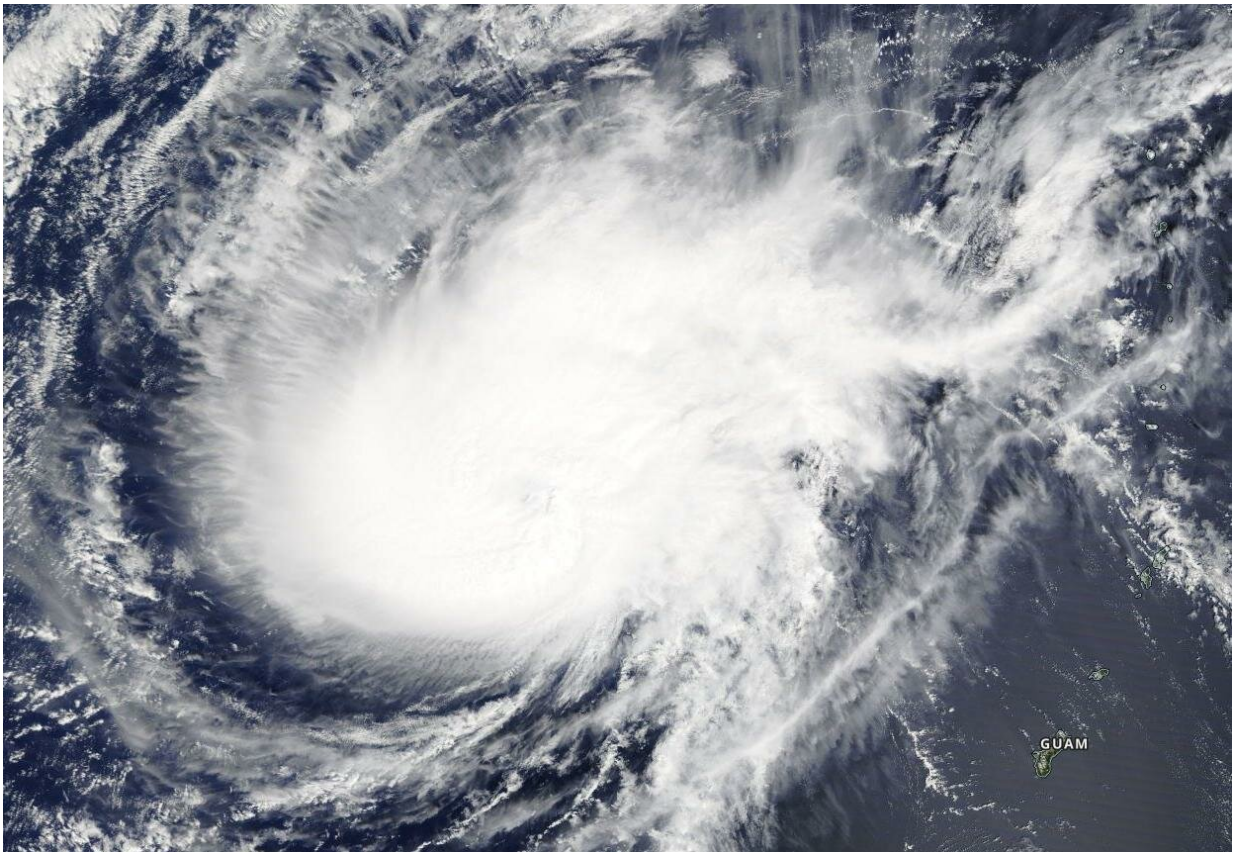


NASA tracks a weaker Typhoon Wutip through northwestern Pacific

February 27 2019



On Feb. 27, 2019, the MODIS instrument aboard NASA's Terra satellite provided a visible image of Typhoon Wutip. Credit: NASA Worldview, Earth Observing System Data and Information System (EOSDIS).

Visible imagery from NASA's Terra satellite showed that Typhoon

Wutip has become more elongated as a result of wind shear.

On February 27, 2019 the Moderate Resolution Imaging Spectroradiometer or MODIS instrument aboard NASA's Terra satellite provided a visible image of Typhoon Wutip in the Northwestern Pacific Ocean. The image showed Wutip no longer has an eye and the storm has elongated from southwest to northeast.

The Joint Typhoon Warning Center noted that "Animated enhanced [infrared satellite imagery](#) shows that deep convection located around the low level circulation center has rapidly decreased."

On February 27, 2019 at 7 p.m. CHST/4 a.m. EDT/0900 UTC the National Weather Service of Tiyan, Guam noted Typhoon Wutip was located near Latitude 16.3 degrees North and Longitude 139.4 degrees East. That's about 410 miles west-northwest of Guam, and about 430 miles west-northwest of Saipan. Wutip is moving north-northwest at 6 mph. It is expected to make a turn toward the west-northwest with an increase in forward speed over the next 24 hours. Maximum sustained winds have decreased to 90 mph. Wutip is forecast to continue to weaken the next few days.

JTWC forecasts that Wutip will track northwestward and vertical wind shear will continue to disrupt the remaining convection associated with it. Wutip will continue to rapidly decrease in intensity and the storm is forecast to become a depression in a day or two.

More information: For updated forecasts from the National Weather Service, Guam, visit: <https://www.prh.noaa.gov/guam/>

Provided by NASA's Goddard Space Flight Center

Citation: NASA tracks a weaker Typhoon Wutip through northwestern Pacific (2019, February 27) retrieved 18 April 2024 from <https://phys.org/news/2019-02-nasa-tracks-weaker-typhoon-wutip.html>

This document is subject to copyright. Apart from any fair dealing for the purpose of private study or research, no part may be reproduced without the written permission. The content is provided for information purposes only.