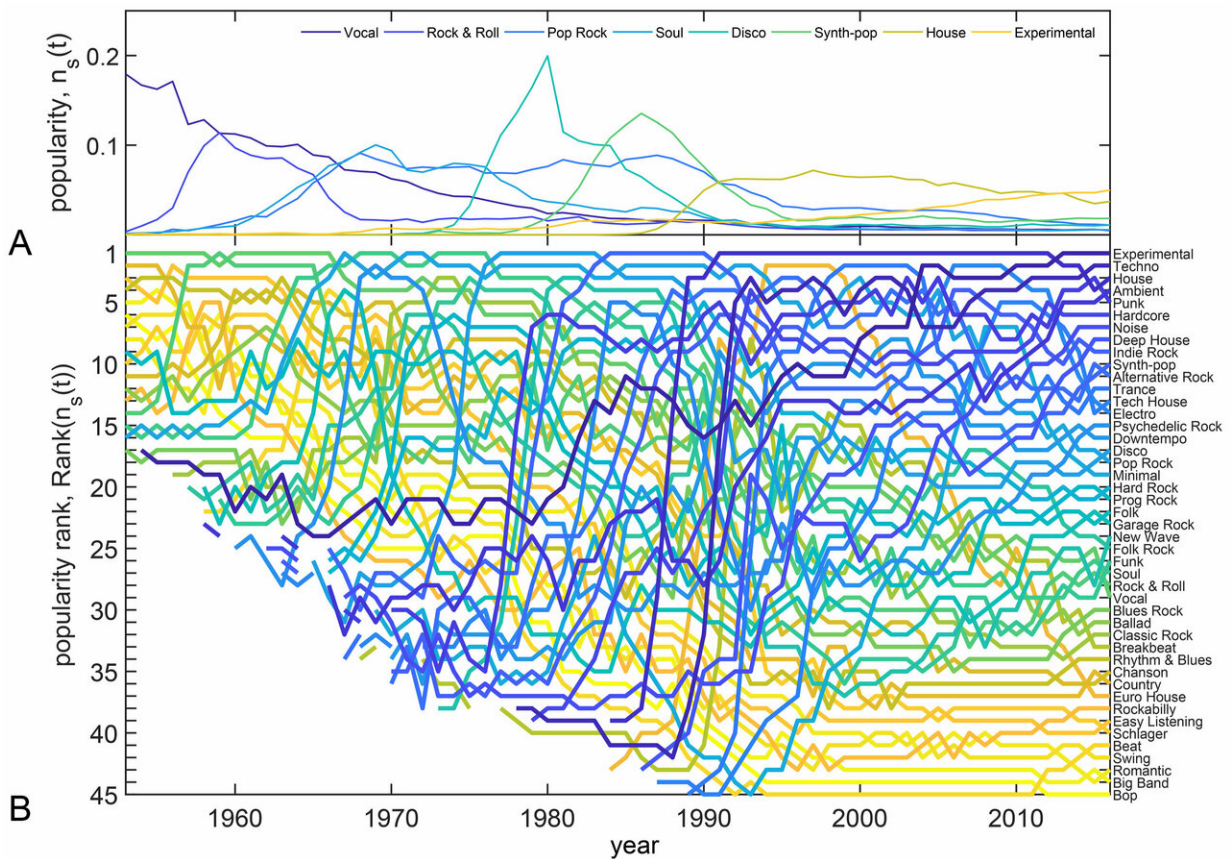


New music styles driven by direct challenges to elites

February 7 2019



(A) For each year the most popular style is identified. Its popularity is shown over the entire observation period. The first cycle is given by Vocal (music strong focus on voice), followed by rock & roll, pop rock, soul, disco, synth-pop, house, and finally experimental music. (B) Most styles enter with a rather low popularity that they maintain over a number of years. These phases are eventually followed by a rapid increase in popularity.

Only styles are shown that were among the five most popular ones in at least one year. Credit: Stefan Thurner, Peter Klimek, Robert Kreuzbauer

A research team led by scientists at the Complexity Science Hub Vienna (CSH) reports that fashion cycles in music are driven by outsider groups. Outsiders challenge the dominant music style by strongly contrasting the preferences of the current elite, for instance, by using different instrumentation or new rhythms.

"They use counter-signaling," explains Stefan Thurner, one of the authors of a new paper in the *Journal of the Royal Society Interface*. "To put it very bluntly: With a new style, [music](#) producers try to slap the old one in the face."

The [social dynamics](#) that lead to new fashions and trends have long been, and still are, subject to heated debate and contradictory theories in sociology. The "costly signaling theory," for example, claims that [elites](#) try to establish distinctions by using styles that are too costly to be adopted by non-members of the group. In contrast to this top-down approach, random-pattern theories postulate that elites randomly pick features from non-elite groups and incorporate them to create a new style from the bottom-up.

Peter Klimek and Stefan Thurner, both CSH and Medical University of Vienna, and Robert Kreuzbauer, University of Surrey, propose an alternative explanation for the evolution of new styles: elite competition in the form of opposition, scientifically called counter-signaling. Elites are defined in this paper as social groups with disproportionate access to certain resources. In the context of music production, elites are those who dominate the most popular music style(s) at a given time.

The scientists tested the three approaches of costly signaling theory, random-pattern theories and counter-dominance signaling, with a large dataset containing almost eight million musical albums, released between 1956 and 2015. The data were derived from Discogs, a crowdsourced online music database. Discogs provides detailed user-generated information on millions of albums, such as artists or instrumentation, and the assignment of each record to one or several of 422 different musical styles.

"We first analyzed whether non-elites imitate elements like music arrangements, sounds or production techniques of current elites," says Peter Klimek. "We found that this happens a lot. After the breakthrough of the American rock band Nirvana, for instance, a whole wave of alternative rock bands adopted elements of Nirvana's grunge style in the 1990s."

Next, the researchers tested the costly signaling [theory](#): Would the most popular musicians abandon their style once newcomers started to copy them? "We found the contrary," replies Klimek. "Elites rather like to see others adopt their symbols and styles. It might be a sign of their cultural influence."

Finally, they examined whether new musical styles emerge at random, as random-pattern theories would suggest. They did not, Klimek states. "New styles clearly show counter-signals that provocatively challenge the currently popular styles." The grungy rock of Nirvana thumbed its nose at highly polished stadium rock of the '80s, characterized by bands like Queen and Guns N' Roses; punk was a counter-signal to the hugely popular "soft rock" of the '70s characterized by musicians like Elton John, Simon and Garfunkel or Tina Turner leading the charts, says the complexity scientist. "Once the new [style](#) is adopted by a sufficiently large number of followers, its representatives become the new elite and the cycle starts from the beginning."

"We demonstrate with a strictly data-driven, quantitative method that new fashions in music gain their impulse from a strong opposition to current trends," Stefan Thurner points out. "This should also be tested for in other domains, be they architecture, art, fashion, or even politics and science. In the case of musical styles, the counter-signaling hypothesis best explains how novelty emerges."

Beyond styles, the paper shows "how big data analytics can be used to come to a better understanding of the many layers of complex dynamics in human society—here, how elites come to power, persist for a while, and eventually get overthrown," concludes Thurner.

More information: Peter Klimek et al, Fashion and art cycles are driven by counter-dominance signals of elite competition: quantitative evidence from music styles, *Journal of The Royal Society Interface* (2019). [DOI: 10.1098/rsif.2018.0731](https://doi.org/10.1098/rsif.2018.0731)

Provided by Complexity Science Hub Vienna

Citation: New music styles driven by direct challenges to elites (2019, February 7) retrieved 18 April 2024 from <https://phys.org/news/2019-02-music-styles-driven-elites.html>

This document is subject to copyright. Apart from any fair dealing for the purpose of private study or research, no part may be reproduced without the written permission. The content is provided for information purposes only.