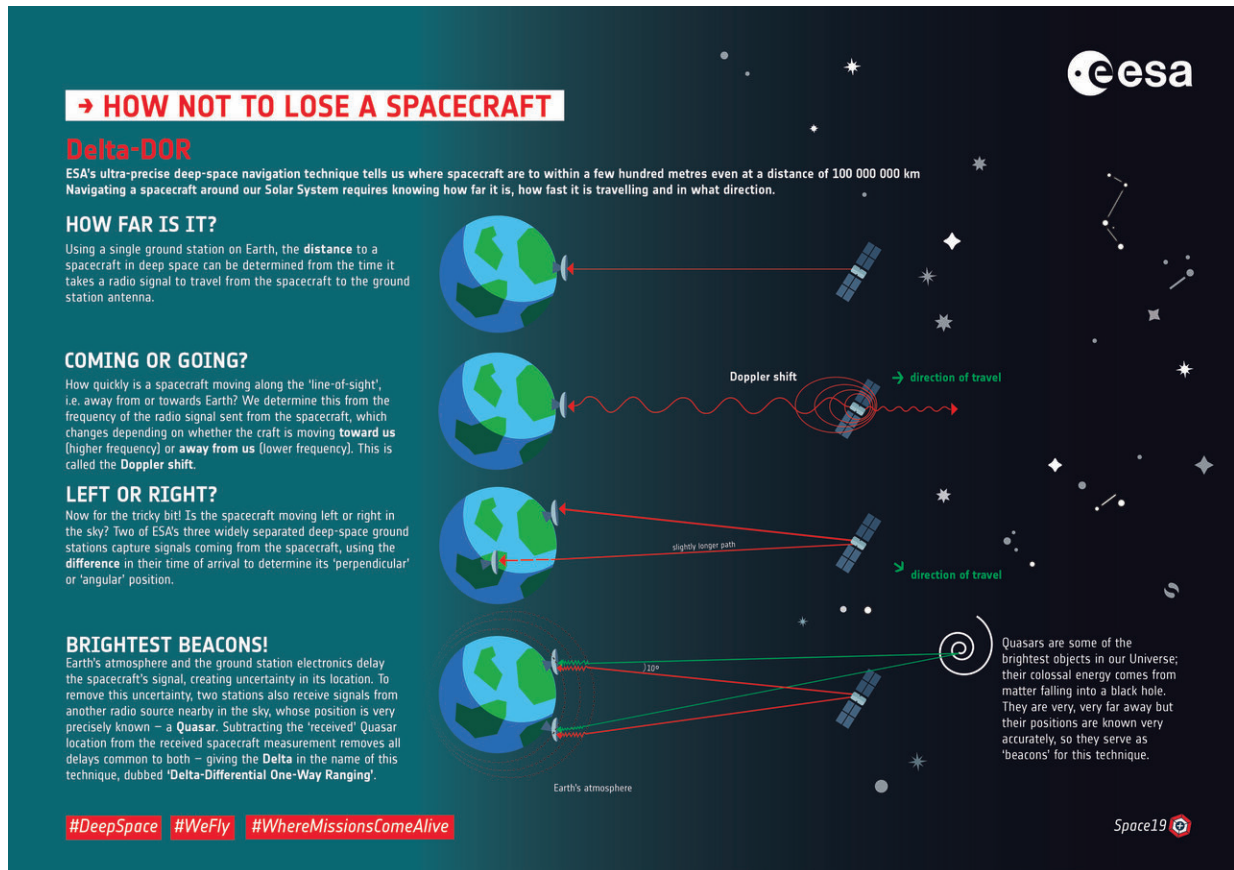


Infographic: How not to lose a spacecraft

February 8 2019



Credit: European Space Agency

ESA's ultra-precise deep-space navigation technique – Delta-DOR – tells us where spacecraft are, accurate to within a few hundred metres, even at a distance of 100,000,000 km.

In order to navigate a spacecraft around our Solar System we have to know how far away it is, how fast it is travelling and in what direction.

Each of these [steps](#) are explained in this new infographic, "How not to lose a spacecraft."

Provided by European Space Agency

Citation: Infographic: How not to lose a spacecraft (2019, February 8) retrieved 27 April 2024 from <https://phys.org/news/2019-02-infographic-spacecraft.html>

<p>This document is subject to copyright. Apart from any fair dealing for the purpose of private study or research, no part may be reproduced without the written permission. The content is provided for information purposes only.</p>
--