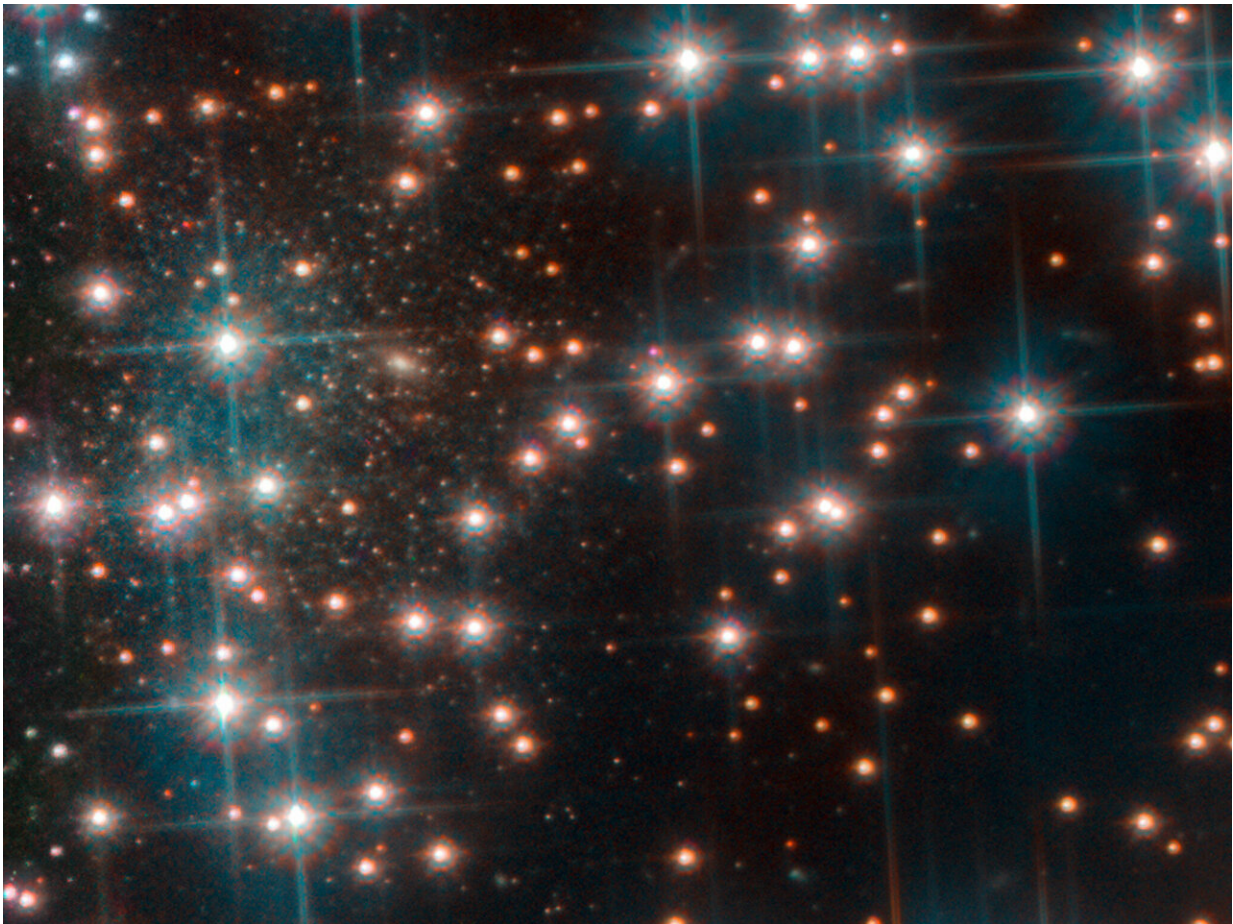


Image: The accidentally discovered galaxy Bedin I

February 1 2019



Credit: ESA/Hubble, NASA, Bedin et al.; CC BY 4.0

This image, taken with Hubble's Advanced Camera for Surveys shows a

part the globular cluster NGC 6752.

Behind the bright stars of the cluster, a denser collection of faint stars is visible—a previously unknown dwarf [spheroidal galaxy](#). This galaxy, nicknamed Bedin 1, is about 30 million light-years from Earth.

Provided by European Space Agency

Citation: Image: The accidentally discovered galaxy Bedin I (2019, February 1) retrieved 19 April 2024 from <https://phys.org/news/2019-02-image-accidentally-galaxy-bedin.html>

This document is subject to copyright. Apart from any fair dealing for the purpose of private study or research, no part may be reproduced without the written permission. The content is provided for information purposes only.