

Offices are too hot or too cold – is there a better way to control room temperature?

January 16 2019, by Carol Menassa, Da Li And Vineet Kamat



Credit: AI-generated image ([disclaimer](#))

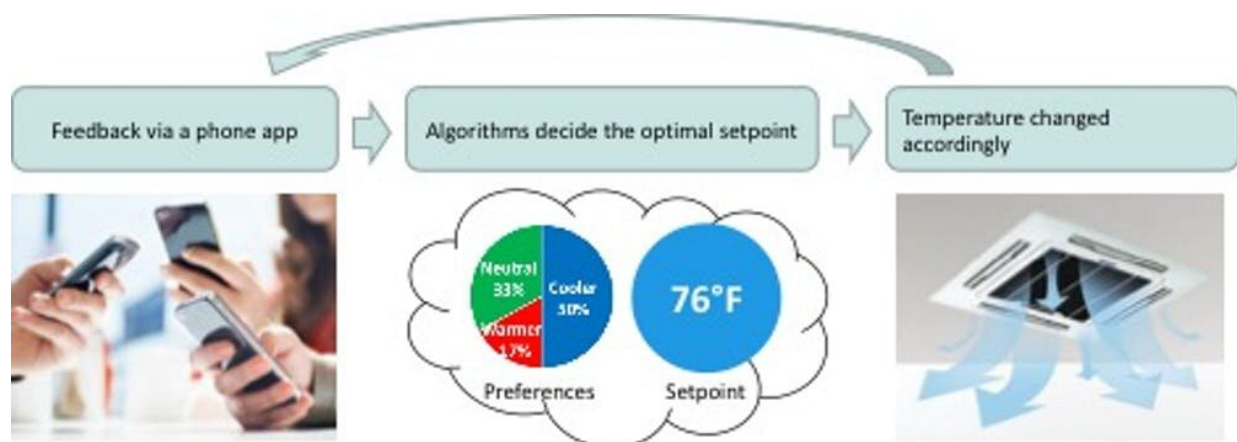
In any office, home or other shared space, there's almost always someone who's too cold, someone who's too hot – and someone who doesn't know what the fuss around the thermostat is all about.

Most often, building owners and operators find out how their heating

and cooling systems are doing by asking occupants if they're comfortable or whether they want to be cooler or warmer. However, everyone has a [different ideal temperature](#) at any given time, based on all sorts of factors, including their age and gender, their physical activity level, what they're wearing and even how much stress they're feeling at the moment. This is a complex problem: For instance, people entering a cool room in the summer may initially feel comfortable but end up feeling too cold after a while.

Those human variables are considered static over time in the current industry guidelines for heating and cooling, which recommend [a range of 68.5 to 75 degrees Fahrenheit in winter and 75 to 80.5 in summer](#). As a result, people often feel too hot or too cold, despite how much energy heating and cooling systems use.

More people would be more comfortable – improving their [health and productivity](#) – if furnaces and [air conditioners](#) could respond in real time to how building occupants were feeling, including how they change through the day. [Our research group](#) has been working on how to incorporate human feedback about room temperatures into heating and cooling systems. What we're developing could help people feel more comfortable, and even let buildings use less energy.

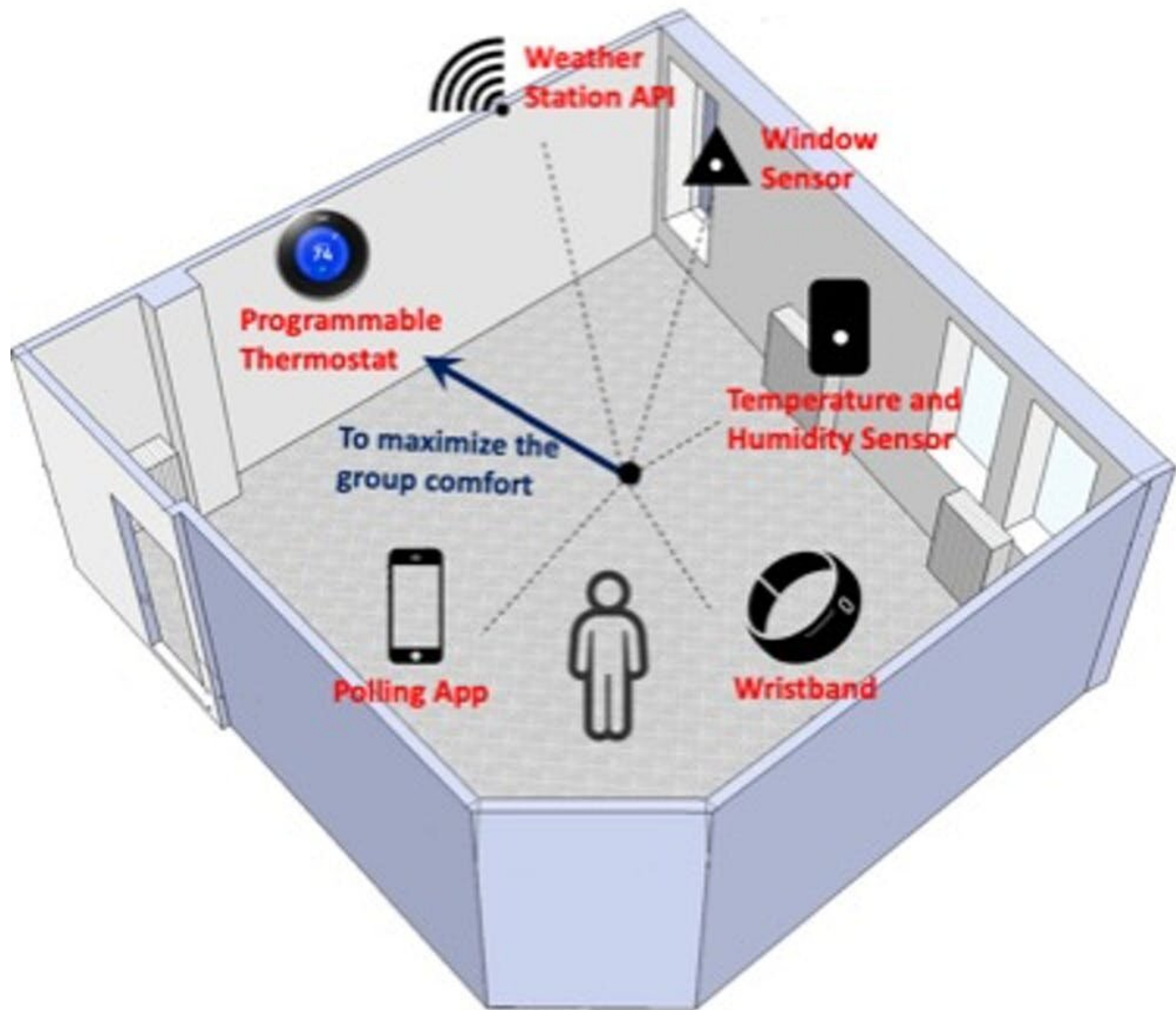


Some systems let users vote on whether they are comfortable, and what would make them more so. Credit: Carol Menassa, et al., [CC BY-ND](#)

Getting people's feedback

Some researchers have proposed [asking officemates to basically vote](#) on what the [temperature](#) should be. Using a phone app or website, building occupants say whether they're too hot or too cold, and what would make them more comfortable. An algorithm then analyzes the groups' answer and calculates a temperature estimated to be most acceptable to most people.

However, that method has two significant limitations: To work best, it requires near-constant input from people who are supposed to be working – and still doesn't factor in whether someone who is uncomfortable could help themselves by putting on or taking off a sweater. It also doesn't take into account how people's bodies experience temperature, which is closely tied to how cool or warm they prefer their environment to be.



A multi-sensor system monitors the environment and room occupants, and adjusts the room heat and cooling accordingly. Credit: Carol Menassa, et al., [CC BY-ND](#)

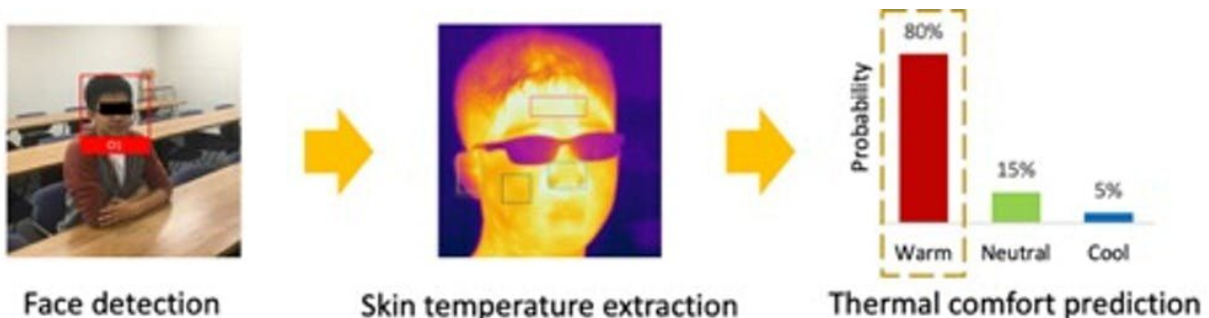
Monitoring temperature remotely

[In previous research](#), our group placed multiple temperature sensors around an office, and combined their data with information from wristbands that sensed occupants' skin temperature and heart rates and

apps that polled workers about how they felt. We found that adding the data about how people's bodies were reacting made the algorithm more accurate at calculating the room temperature at which people occupying a given space would feel most comfortable.

Our [current project](#), seeks to make things even easier and less intrusive for people, eliminating the wristbands and apps, and only using remote sensing of people's skin temperature to measure how comfortable they are. We developed a method using regular cameras, thermal imaging and distance sensors to detect occupants' presence in a space, focus on their faces and measure their skin temperature. From that data, our algorithm calculates whether – and how – to change the temperature in the room regardless of the number of occupants in the space. When we tested it in an office occupied by seven people, they complained less about feeling uncomfortably cold or warm.

This method is most effective in multi-occupancy spaces, like open-plan offices, meeting rooms and theaters. It can accommodate, and account for, differences in temperature between people in different areas of a [room](#), whether they are standing or sitting or moving around. And it can adjust on the fly without requiring active human feedback. Our group will continue to explore this and other non-intrusive methods to help people feel more comfortable – and be healthier and more productive.



Face detection software coupled with temperature-sensing cameras can evaluate whether a person is warm, cold or just right. Credit: Carol Menassa, et al., [CC BY-ND](#)

This article is republished from [The Conversation](#) under a Creative Commons license. Read the [original article](#).

Provided by The Conversation

Citation: Offices are too hot or too cold – is there a better way to control room temperature? (2019, January 16) retrieved 2 May 2024 from <https://phys.org/news/2019-01-offices-hot-cold-room-temperature.html>

<p>This document is subject to copyright. Apart from any fair dealing for the purpose of private study or research, no part may be reproduced without the written permission. The content is provided for information purposes only.</p>
--