

# Huge cavity in Antarctic glacier signals rapid decay

January 31 2019

---



Thwaites Glacier. Credit: NASA/OIB/Jeremy Harbeck

A gigantic cavity—two-thirds the area of Manhattan and almost 1,000 feet (300 meters) tall—growing at the bottom of Thwaites Glacier in West Antarctica is one of several disturbing discoveries reported in a new NASA-led study of the disintegrating glacier. The findings highlight the need for detailed observations of Antarctic glaciers' undersides in calculating how fast global sea levels will rise in response to climate

change.

Researchers expected to find some gaps between ice and bedrock at Thwaites' bottom where [ocean water](#) could flow in and melt the glacier from below. The size and explosive growth rate of the newfound hole, however, surprised them. It's big enough to have contained 14 billion tons of ice, and most of that ice melted over the last three years.

"We have suspected for years that Thwaites was not tightly attached to the bedrock beneath it," said Eric Rignot of the University of California, Irvine, and NASA's Jet Propulsion Laboratory in Pasadena, California. Rignot is a co-author of the new study, which was published today in *Science Advances*. "Thanks to a new generation of satellites, we can finally see the detail," he said.

The cavity was revealed by ice-penetrating radar in NASA's Operation IceBridge, an airborne campaign beginning in 2010 that studies connections between the polar regions and the global climate. The researchers also used data from a constellation of Italian and German spaceborne synthetic aperture radars. These very high-resolution data can be processed by a technique called radar interferometry to reveal how the ground surface below has moved between images.

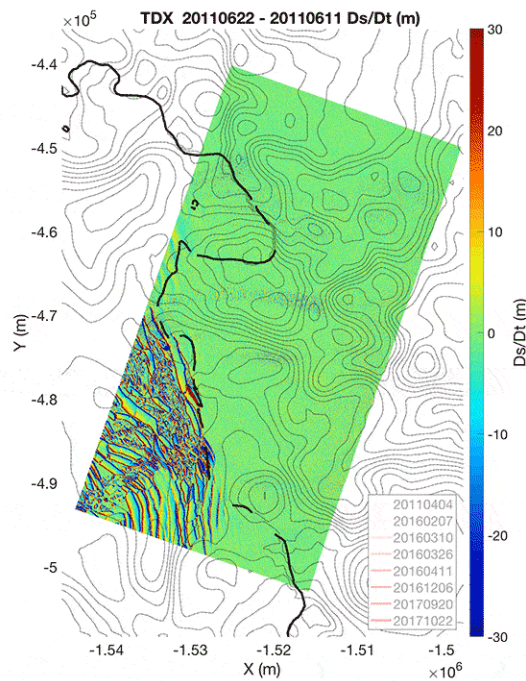
"[The size of] a cavity under a glacier plays an important role in melting," said the study's lead author, Pietro Milillo of JPL. "As more heat and water get under the glacier, it melts faster."

Numerical models of ice sheets use a fixed shape to represent a cavity under the ice, rather than allowing the cavity to change and grow. The new discovery implies that this limitation most likely causes those models to underestimate how fast Thwaites is losing ice.

About the size of Florida, Thwaites Glacier is currently responsible for

approximately 4 percent of global sea level rise. It holds enough ice to raise the world ocean a little over 2 feet (65 centimeters) and backstops neighboring [glaciers](#) that would raise sea levels an additional 8 feet (2.4 meters) if all the ice were lost.

Thwaites is one of the hardest places to reach on Earth, but it is about to become better known than ever before. The U.S. National Science Foundation and British National Environmental Research Council are mounting a five-year field project to answer the most critical questions about its processes and features. The International Thwaites Glacier Collaboration will begin its field experiments in the Southern Hemisphere summer of 2019-20.



Changes in surface height at Thwaites Glacier's grounding line, 2011 to 2017, with sinking areas in red and rising areas in blue. The growing cavity (red mass, center) caused the greatest sinking. The mottled area (bottom left) is the site of extensive calving. Contours show bedrock topography. Credit: NASA/JPL-

## **How Scientists Measure Ice Loss**

There's no way to monitor Antarctic glaciers from ground level over the long term. Instead, scientists use satellite or airborne instrument data to observe features that change as a glacier melts, such as its flow speed and surface height.

Another changing feature is a glacier's grounding line - the place near the edge of the continent where it lifts off its bed and starts to float on seawater. Many Antarctic glaciers extend for miles beyond their grounding lines, floating out over the open ocean.

Just as a grounded boat can float again when the weight of its cargo is removed, a glacier that loses ice weight can float over land where it used to stick. When this happens, the grounding line retreats inland. That exposes more of a glacier's underside to sea water, increasing the likelihood its melt rate will accelerate.

## **An Irregular Retreat**

For Thwaites, "We are discovering different mechanisms of retreat," Millilo said. Different processes at various parts of the 100-mile-long (160-kilometer-long) front of the glacier are putting the rates of grounding-line retreat and of ice loss out of sync.

The huge cavity is under the main trunk of the glacier on its western side - the side farther from the West Antarctic Peninsula. In this region, as the tide rises and falls, the grounding line retreats and advances across a zone of about 2 to 3 miles (3 to 5 kilometers). The glacier has been

coming unstuck from a ridge in the bedrock at a steady rate of about 0.4 to 0.5 miles (0.6 to 0.8 kilometers) a year since 1992. Despite this stable rate of grounding-line retreat, the melt rate on this side of the glacier is extremely high.

"On the eastern side of the glacier, the grounding-line retreat proceeds through small channels, maybe a kilometer wide, like fingers reaching beneath the glacier to melt it from below," Milillo said. In that region, the rate of grounding-line retreat doubled from about 0.4 miles (0.6 kilometers) a year from 1992 to 2011 to 0.8 miles (1.2 kilometers) a year from 2011 to 2017. Even with this accelerating retreat, however, melt rates on this side of the glacier are lower than on the western side.

These results highlight that ice-ocean interactions are more complex than previously understood.

Milillo hopes the new results will be useful for the International Thwaites Glacier Collaboration researchers as they prepare for their fieldwork. "Such data is essential for field parties to focus on areas where the action is, because the grounding line is retreating rapidly with complex spatial patterns," he said.

"Understanding the details of how the ocean melts away this glacier is essential to project its impact on sea level rise in the coming decades," Rignot said.

**More information:** P. Milillo et al. Heterogeneous retreat and ice melt of Thwaites Glacier, West Antarctica, *Science Advances* (2019). [DOI: 10.1126/sciadv.aau3433](https://doi.org/10.1126/sciadv.aau3433)

Provided by NASA

Citation: Huge cavity in Antarctic glacier signals rapid decay (2019, January 31) retrieved 20 April 2024 from <https://phys.org/news/2019-01-huge-cavity-antarctic-glacier-rapid.html>

This document is subject to copyright. Apart from any fair dealing for the purpose of private study or research, no part may be reproduced without the written permission. The content is provided for information purposes only.