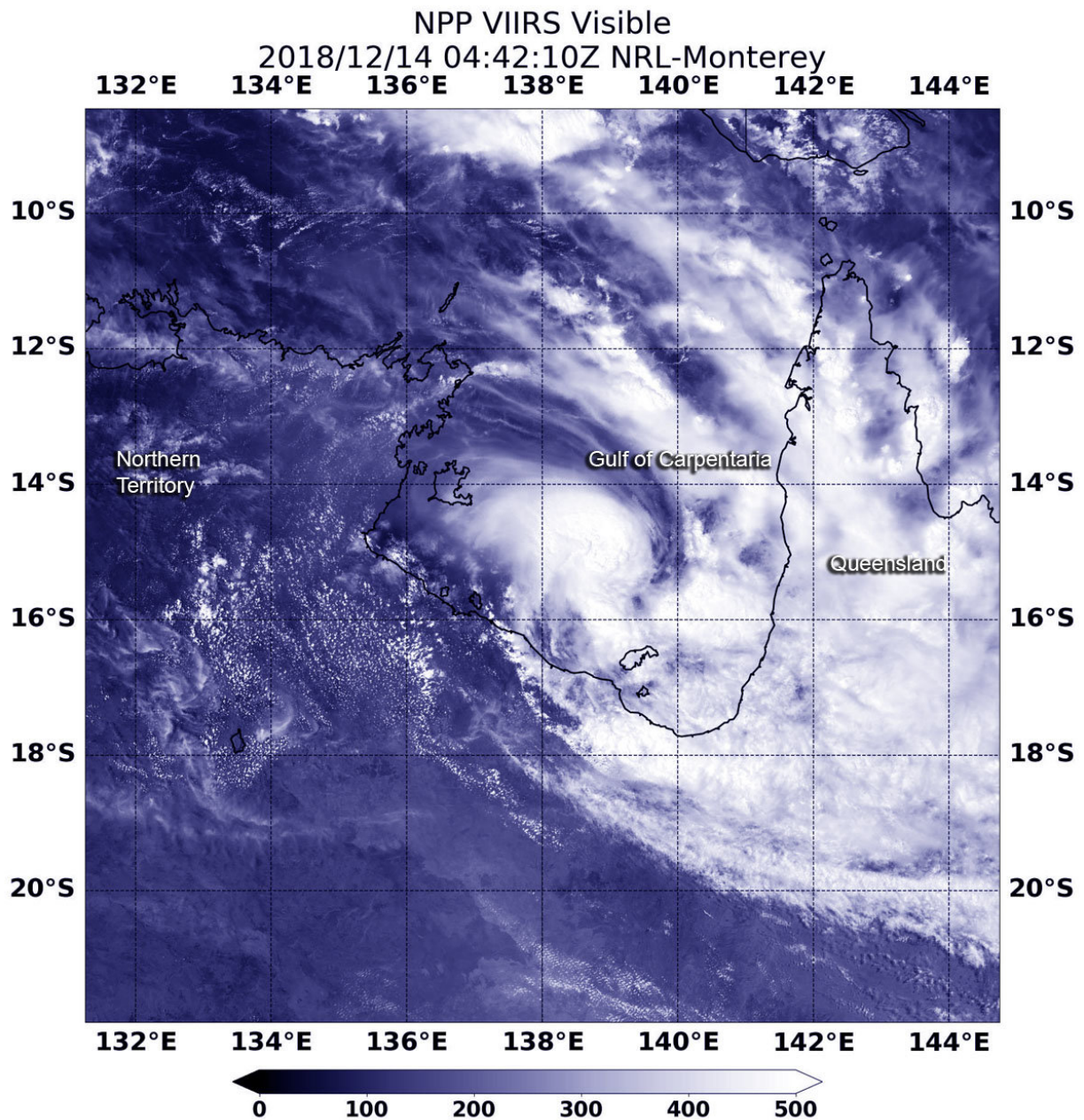


# NASA-NOAA's satellite tracks a stronger Tropical Cyclone Owen nearing landfall

December 14 2018



NASA-NOAA's Suomi NPP satellite passed over the Southern Pacific Ocean and captured a visible image of Tropical Cyclone Owen moving through Australia's Gulf of Carpentaria. Credit: NASA/NOAA/NRL

Tropical Cyclone Owen continued to strengthen as it moved east through the Gulf of Carpentaria and toward a landfall in western Queensland, Australia. NASA-NOAA's Suomi NPP satellite provided a visible image of the storm.

On Dec. 14, the Australian Bureau of Meteorology or ABM posted a warning zone that includes coastal and adjacent inland areas between Karumba and Cape Keerweer, including Kowanyama, Pormpuraaw, Croydon and Palmerville.

Suomi NPP passed over Owen on Dec. 14 at 4:42 UTC (Dec. 13 at 11:42 p.m. EDT) the Visible Infrared Imaging Radiometer Suite (VIIRS) instrument provided a visible image. VIIRS showed the center was surrounded by powerful storms. Clouds and storms from Owen's eastern side stretched over Queensland.

At 10 p.m. AEST (local time, Queensland) or 7 a.m. EST, Owen was a Category 3 [storm](#) with maximum sustained winds near the center of 120 kilometers (75 miles) per hour. It was located near 15.3 degrees south and 140.6 degrees east, estimated to be 120 kilometers west southwest of Pormpuraaw and 160 kilometers (99 miles) north northwest of Gilbert River Mouth. Owen is moving east at 31 kph (19 mph).

ABM said "Severe tropical cyclone Owen is expected to continue shifting eastwards into the early hours of Saturday as a low end Category 3 system. Owen is forecast to make landfall about the southeast Gulf of

Carpentaria coast, between Gilbert River Mouth and Pormpuraaw, in the very early hours of Saturday, Dec. 15."

**More information:** For updated forecasts, visit:  
<http://www.bom.gov.au>

Provided by NASA's Goddard Space Flight Center

Citation: NASA-NOAA's satellite tracks a stronger Tropical Cyclone Owen nearing landfall (2018, December 14) retrieved 6 May 2024 from <https://phys.org/news/2018-12-nasa-noaa-satellite-tracks-stronger-tropical.html>

<p>This document is subject to copyright. Apart from any fair dealing for the purpose of private study or research, no part may be reproduced without the written permission. The content is provided for information purposes only.</p>
--