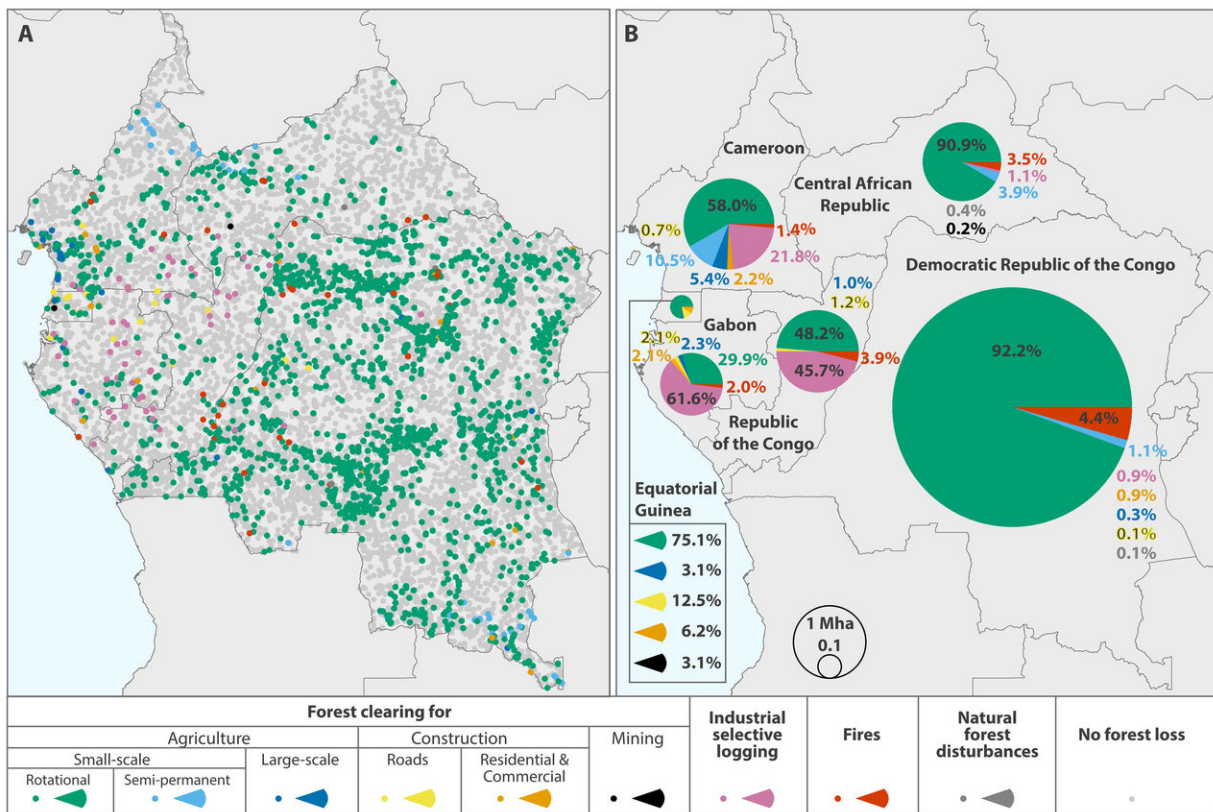


Smallholder clearing found to be dominant reason for forest loss in the Congo Basin

November 8 2018, by Bob Yirka



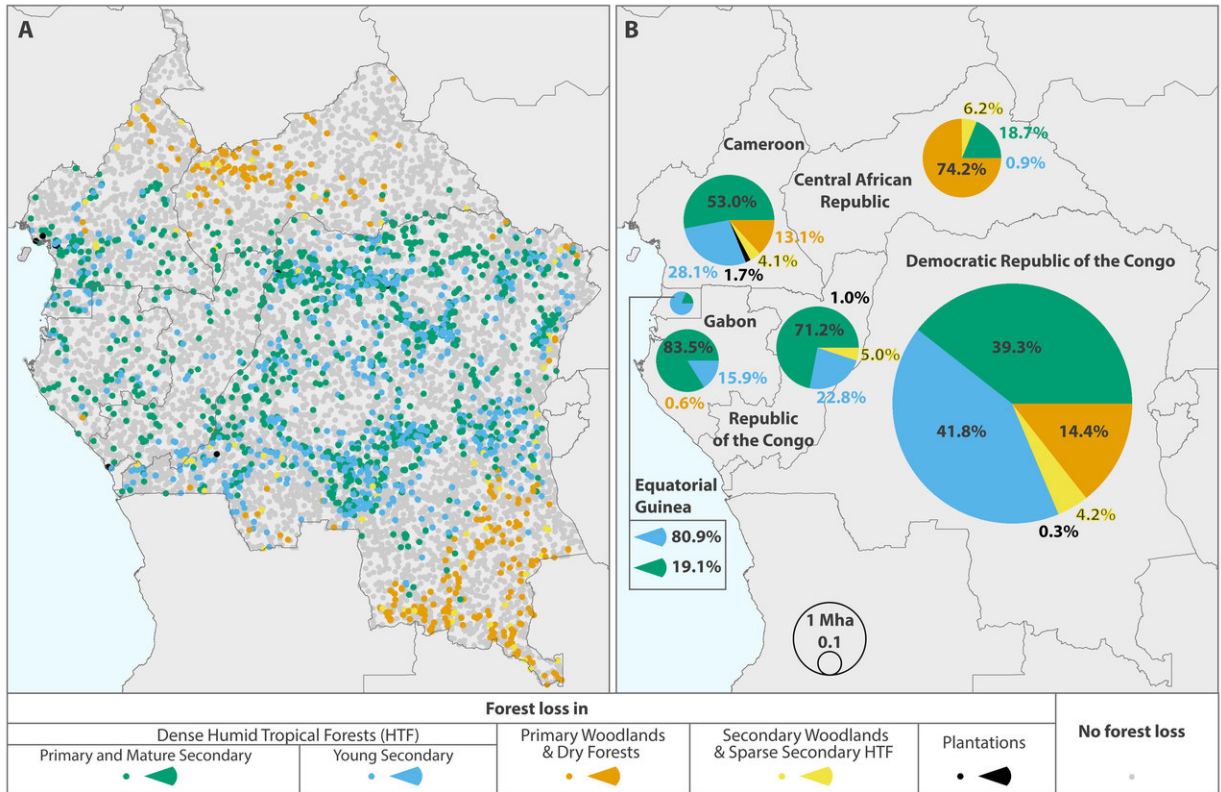
Three-year moving average of annual forest loss area for the major disturbance categories in all countries. Credit: Tyukavina et al., Sci. Adv. 2018;4: eaat2993

A team of researchers from the University of Maryland and the State University of New York has found that smallholder clearing is the

dominant driver of forest loss in the Congo Basin. In their paper published in the journal *Science Advances*, the group describes the techniques they used to assess forest loss in the area over the period from 2000 to 2014 and what they found.

The Congo Basin includes forests in the Democratic Republic of Congo, the Republic of Congo, Gabon and Equatorial Guinea—it comprises the second largest rainforest in the world (the Amazon [basin](#) is the largest). And like the Amazon basin, it is being cut down. In this new effort, the researchers sought to learn more about the entities that are cutting down the forest as a means toward targeting efforts to reduce or eliminate such cutting.

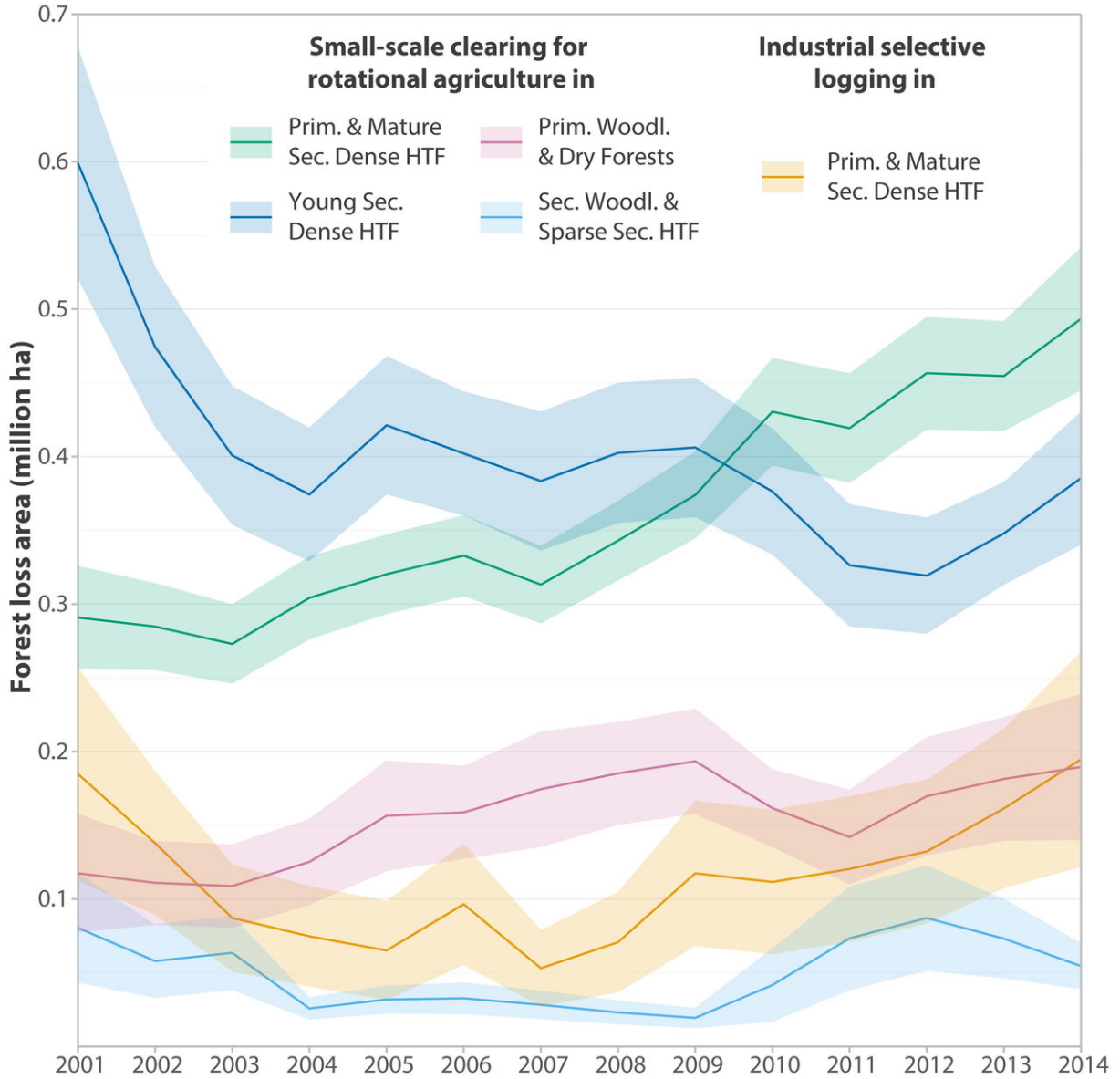
To better understand what is happening in the basin, the researchers studied satellite data over the years 2000 to 2014, noting changes in tree cover. They also used remote sensing technology to analyze forest changes and deforestation drivers. They then compared what they learned with information provided by outside experts on the area.



Pre-disturbance forest type. (A) Reference pre-disturbance type for sampled pixels identified as forest loss. (B) National estimates of 2000-2014 forest loss area by re-disturbance forest type. Area estimates expressed in ha along with SEs are presented table S2A. Credit: Tyukavina et al., Sci. Adv. 2018;4: eaat2993

The researchers found that the Amazon Basin lost forest area approximately the size of Bangladesh over the span of just 15 years. They also found that logging was not the biggest culprit—it was small-time clearing done by hand by subsistence farmers. In all, 80 percent of [forest loss](#) was due to what the researchers describe as smallholder clearing. The researchers suggest the reason for such massive smallholder clearing is poverty. Unable to make a living, many people turn to farming. They cut down a swath of [forest](#) and plant crops. But the soil is quickly depleted, forcing the farmers to cut down new areas

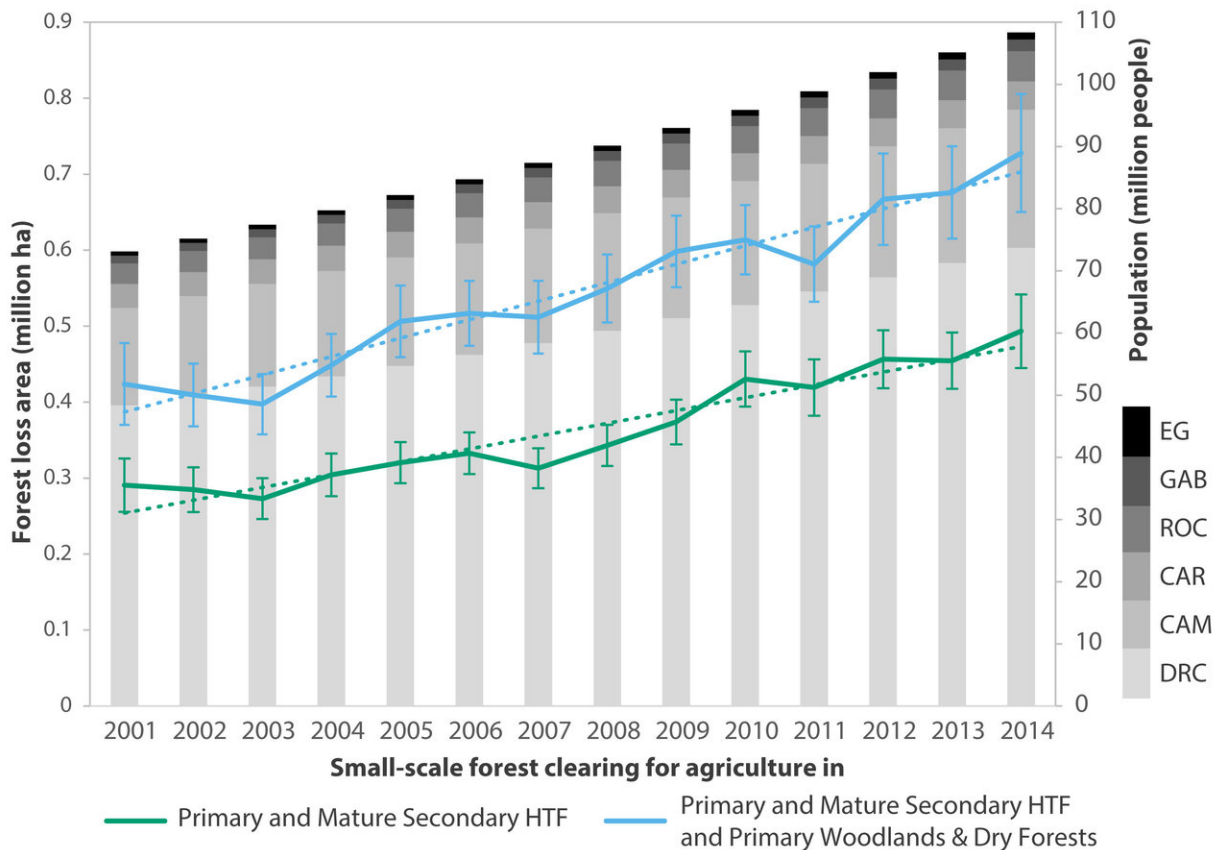
periodically.



3-year moving average of annual forest loss area for the major disturbance categories in all countries. Each major disturbance category contributes >0.5 Mha to the total 2000-2014 forest loss area. Forest clearing for small-scale rotational agriculture includes clearing for charcoal production, the contribution of which does not exceed 10% of the class area. Error bands represent \pm SE. Annual area estimates along with SEs are presented in table S2B. Abbreviations:

Prim. – “Primary”, Sec. - “Secondary”, HTF – “Humid Tropical Forests”, Woodl. – “Woodlands”. Credit: Tyukavina et al., Sci. Adv. 2018;4: eaat2993

The researchers also noted that the United Nations has estimated that the human population in the Congo Basin will be five times higher than it is today by the end of the century. They suggest that if conditions in the area do not improve, the entire basin could lose all its native forests over the same time period.



Expansion of small-scale agriculture into recently undisturbed forests and woodlands (lines), and population growth in the region by country (bar chart). Solid lines connect the annual forest loss area estimates and dashed lines

represent the linear trend based on ordinary least squares regression. Forest clearing for small-scale rotational agriculture includes clearing for charcoal production, the contribution of which does not exceed 10% of the class area. Error bars on the area estimates represent one standard error. Credit: Tyukavina et al., *Sci. Adv.* 2018;4: eaat2993

More information: Alexandra Tyukavina et al. Congo Basin forest loss dominated by increasing smallholder clearing, *Science Advances* (2018). [DOI: 10.1126/sciadv.aat2993](https://doi.org/10.1126/sciadv.aat2993)

© 2018 Science X Network

Citation: Smallholder clearing found to be dominant reason for forest loss in the Congo Basin (2018, November 8) retrieved 26 April 2024 from <https://phys.org/news/2018-11-smallholder-dominant-forest-loss-congo.html>

This document is subject to copyright. Apart from any fair dealing for the purpose of private study or research, no part may be reproduced without the written permission. The content is provided for information purposes only.