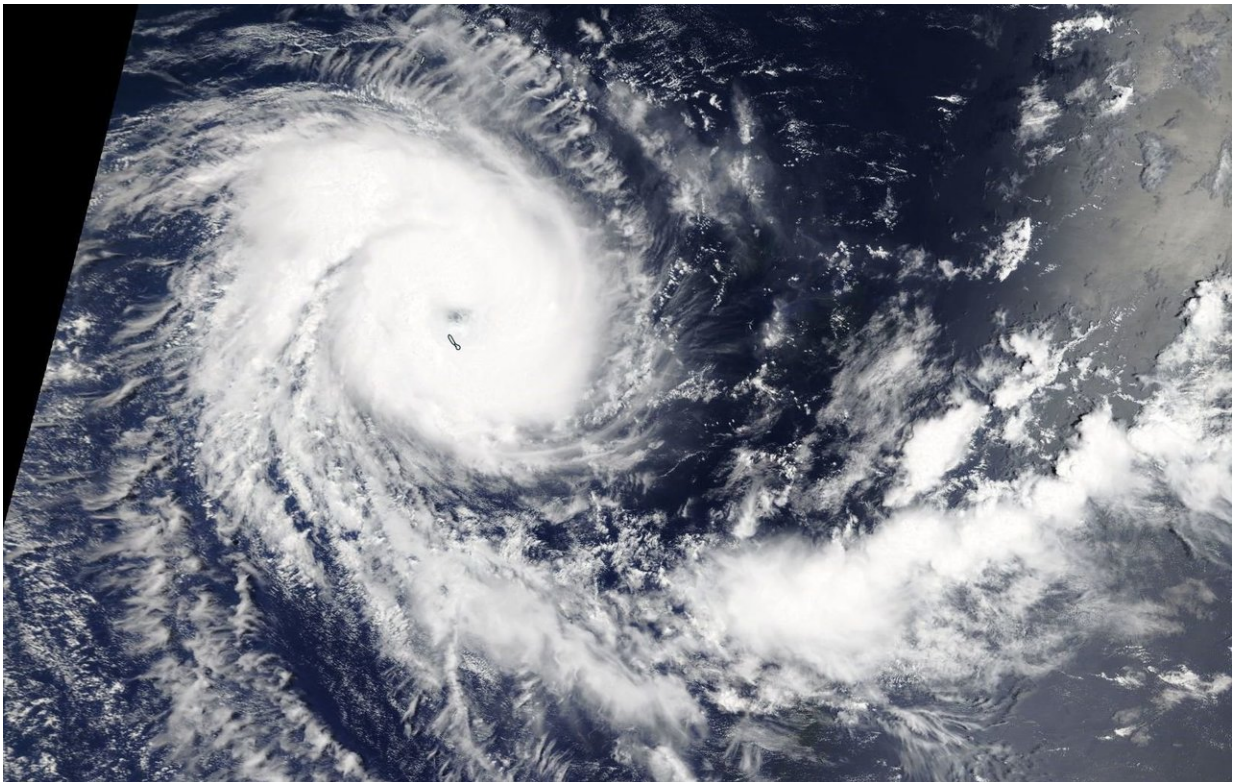


# NASA sees Tropical Cyclone Alcide reach hurricane strength

November 7 2018

---



On Nov. 7, the MODIS instrument aboard NASA's Terra satellite provided a visible image of Tropical Cyclone Alcide in the Southern Indian Ocean after it strengthened to hurricane-force. Credit: NASA Worldview, Earth Observing System Data and Information System (EOSDIS)

NASA's Terra satellite provided a visible image of a more organized

Tropical Cyclone Alcide in the Southern Indian Ocean after it reached hurricane-force.

On Nov. 7, a [visible image](#) of Alcide taken by the Moderate Resolution Imaging Spectroradiometer or MODIS instrument aboard NASA's Terra satellite showed an organized storm with a thick band of powerful thunderstorms circling the center. The eye appears ragged on the MODIS imagery and is about 10 nautical miles wide. Satellite data taken after the MODIS image showed that the system continued to strengthen.

The Joint Typhoon Warning Center said that at 10 a.m. EST (1500 UTC) on Nov. 7, Alcide had maximum sustained winds near 75 knots (86 mph/139 kph). It was centered near 10.6 degrees south latitude and 55.7 degrees east longitude. Tropical cyclone Alcide is located approximately 587 nautical miles north of Port Louis, Mauritius, and was moving to the west-southwest.

Alcide is expected to strengthen over the next day or two before starting a weakening trend over cooler ocean waters.

Provided by NASA's Goddard Space Flight Center

Citation: NASA sees Tropical Cyclone Alcide reach hurricane strength (2018, November 7) retrieved 23 April 2024 from <https://phys.org/news/2018-11-nasa-tropical-cyclone-alcide-hurricane.html>

This document is subject to copyright. Apart from any fair dealing for the purpose of private study or research, no part may be reproduced without the written permission. The content is provided for information purposes only.