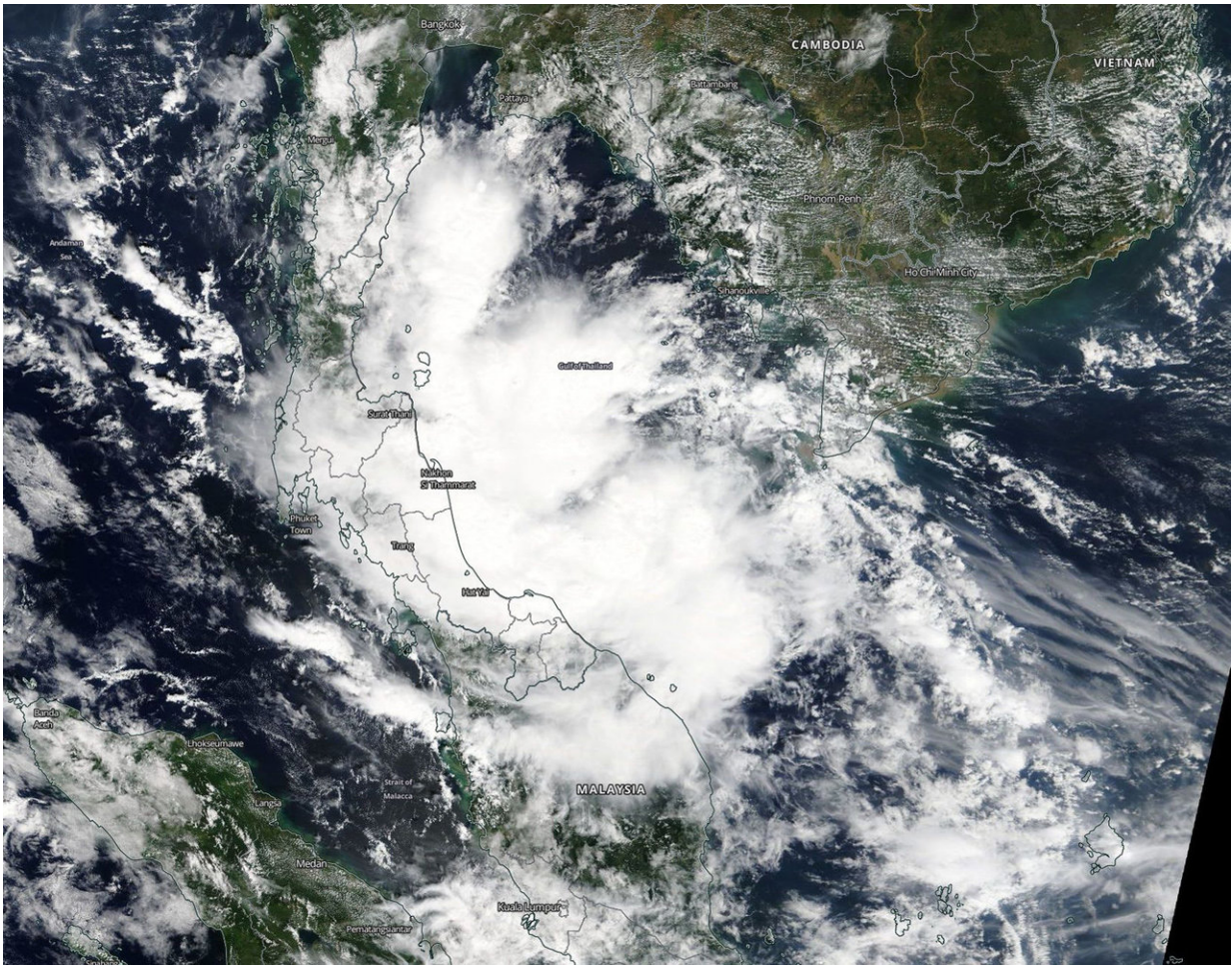


NASA tracks Tropical Depression Toraji in the Gulf of Thailand

November 20 2018



On Nov. 20, the MODIS instrument aboard NASA's Terra satellite looked at Tropical Depression Toraji moving through the Gulf of Thailand. Credit: NASA Worldview, Earth Observing System Data and Information System (EOSDIS)

Visible from NASA's Terra satellite revealed the extent of Tropical Depression Toraji as it continued moving through the Gulf of Thailand and affecting southern Thailand and Malaysia.

On Nov. 20 a [visible image](#) from the Moderate Resolution Imaging Spectroradiometer or MODIS instrument aboard NASA's Terra satellite showed that Tropical Depression Toraji appeared somewhat disorganized. Toraji's elongated northern quadrant stretched into the northern Gulf of Thailand, while the western side of the storm stretched over land from Surat Thani south to northern Malaysia.

Toraji formed on Nov. 19, fizzled and regenerated in the Gulf of Thailand on Nov. 20 after a brief existence.

At 10 a.m. EST (1500 UTC) Tropical depression Toraji, known previously as Tropical Depression 32W was located near 8.3 degrees north latitude and 102.0 east longitude, about 340 west-southwest of Ho Chi Minh City, Vietnam. Toraji was moving to the west-southwest and had maximum sustained winds near 25 knots (28.7 mph).

Toraji will cross the Malay Peninsula and is expected to dissipate in the Malakka Strait

Provided by NASA's Goddard Space Flight Center

Citation: NASA tracks Tropical Depression Toraji in the Gulf of Thailand (2018, November 20) retrieved 10 April 2024 from

<https://phys.org/news/2018-11-nasa-tracks-tropical-depression-toraji.html>

<p>This document is subject to copyright. Apart from any fair dealing for the purpose of private study or research, no part may be reproduced without the written permission. The content is provided for information purposes only.</p>
--