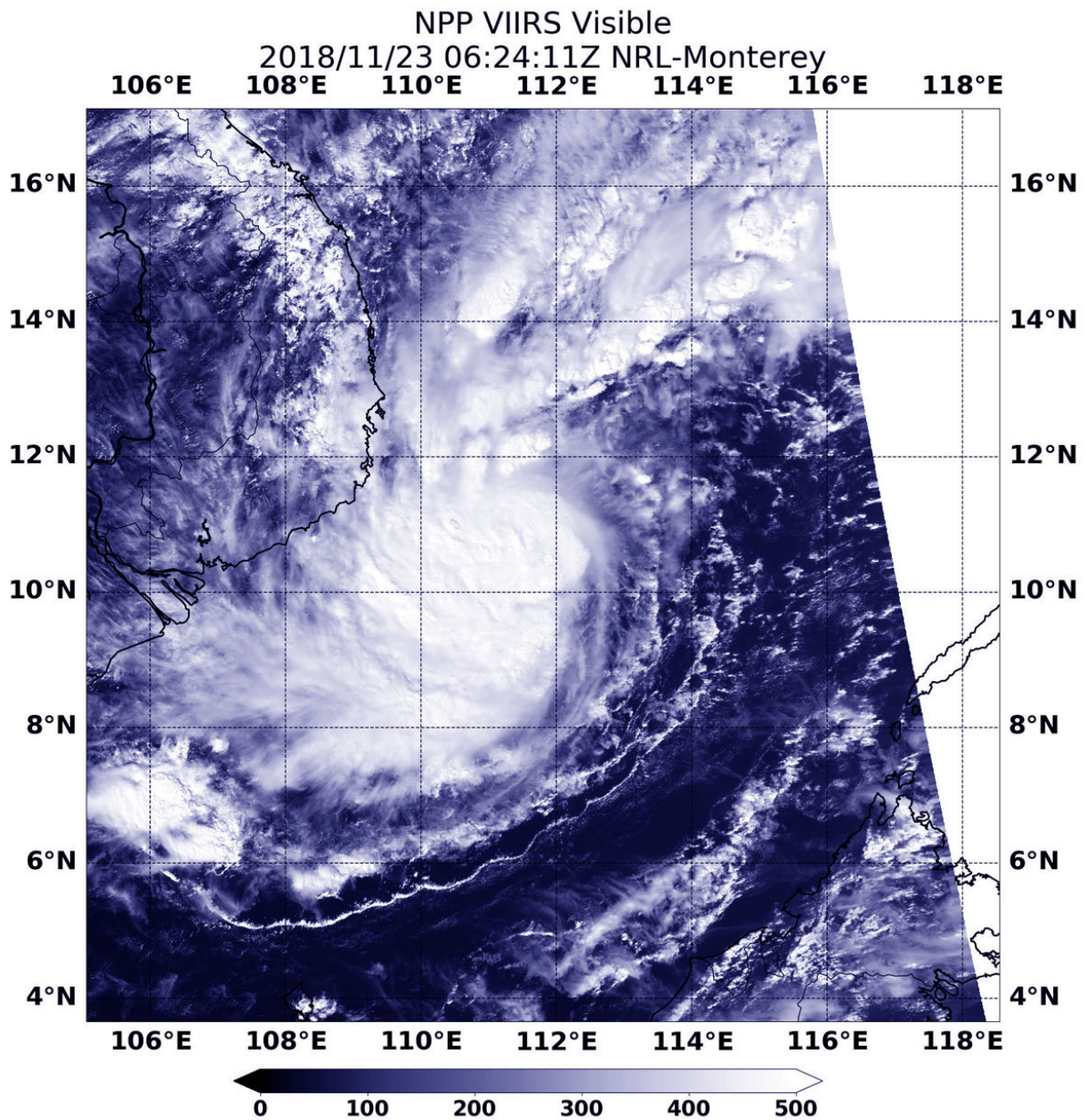


NASA sees stronger Tropical Cyclone 33W headed toward Vietnam

November 26 2018



NASA-NOAA's Suomi NPP satellite passed over the South China Sea and captured a visible image of Tropical Storm 33W moving toward Vietnam.
Credit: NASA/NOAA/NRL

33W was a tropical depression when it crossed the southern and central Philippines. As it moved through the South China Sea over the last two days it strengthened into a tropical storm and was renamed Usagi. On Nov. 23, NASA-NOAA's Suomi NPP satellite captured a visible image of the stronger storm on approach to Vietnam.

Suomi NPP passed over 33W on Nov. 23 at 1:24 a.m. EDT (0624 UTC) and the VIIRS instrument provided a visible image. The VIIRS image showed 33W had strengthened and its center was surrounded by powerful storms. Bands of thunderstorms wrapped into the low-level center from the southern quadrant.

At 10 a.m. EDT (1500 UTC) Tropical Storm 33W or Usagi was located near 10.4 degrees north latitude and 110.4 degrees east longitude. That's about 243 nautical miles east of Ho Chi Minh City, Vietnam. 33W was moving west and has maximum sustained winds near 55 knots (63 mph/102 kph). The Joint Typhoon Warning Center or JTWC noted that 33W may intensify slightly before making landfall on a day.

JTWC forecasters expect 33W to make landfall very near Ho Chi Minh City late on Nov. 24, and then progress to the northwest into Cambodia

Provided by NASA's Goddard Space Flight Center

Citation: NASA sees stronger Tropical Cyclone 33W headed toward Vietnam (2018, November

26) retrieved 23 May 2024 from

<https://phys.org/news/2018-11-nasa-stronger-tropical-cyclone-33w.html>

This document is subject to copyright. Apart from any fair dealing for the purpose of private study or research, no part may be reproduced without the written permission. The content is provided for information purposes only.