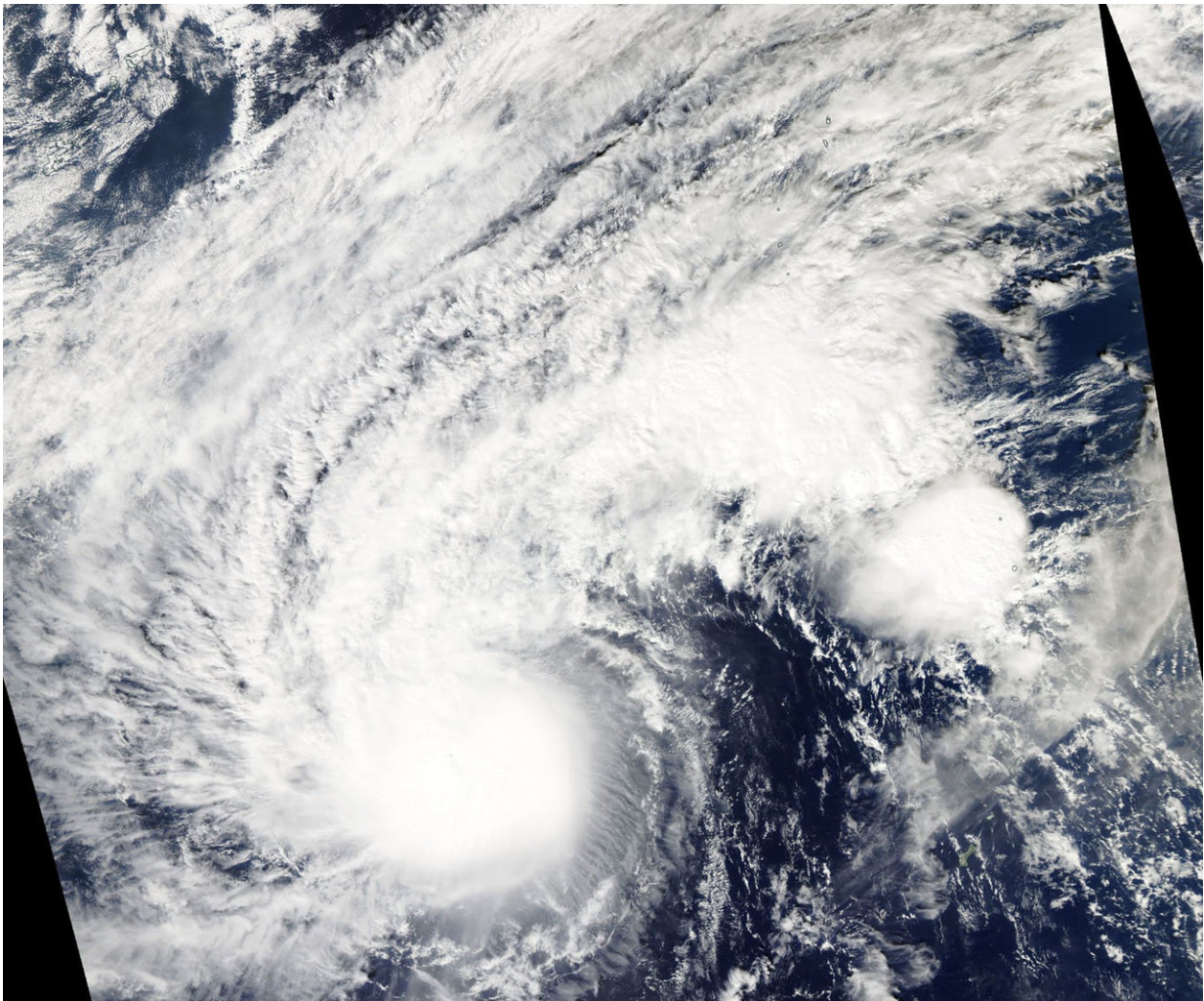


NASA finds a cloud-filled eye in Typhoon Man-yi

November 26 2018



On Nov. 23 the MODIS instrument aboard NASA's Aqua satellite provided a visible image of Typhoon Man-yi that revealed a cloud-filled eye and a powerful storm. Credit: NASA Worldview, Earth Observing System Data and Information System (EOSDIS)

Visible imagery from NASA's Aqua satellite revealed Typhoon Man-yi's eye had become cloud-filled.

On Nov. 23 the Moderate Resolution Imaging Spectroradiometer or MODIS instrument aboard NASA's Aqua satellite provided a visible image of Typhoon Many-yi in the Northwestern Pacific Ocean. The MODIS image showed that clouds had filled in over the eye, and the storm had become elongated. The [elongation](#) indicates that the storm is being affected by outside winds and will likely weaken.

The Joint Typhoon Warning Center or JTWC noted at 10 a.m. EST (1500 UTC) that Man-yi had maximum sustained winds near 85 knots (98 mph/157 kph). It was centered near 16.9 [degrees](#) north latitude and 135.3 degrees east longitude. That's 729 nautical miles southeast of Kadena Air Base, Okinawa, Japan. Man-yi was moving north-northwest.

JTWC has forecast Man-yi to move northwest and begin weakening. It is expected to make a sharp turn to the northeast. It is expected to pass east of Okinawa Island, Japan.

Provided by NASA's Goddard Space Flight Center

Citation: NASA finds a cloud-filled eye in Typhoon Man-yi (2018, November 26) retrieved 24 June 2024 from <https://phys.org/news/2018-11-nasa-cloud-filled-eye-typhoon-man-yi.html>

This document is subject to copyright. Apart from any fair dealing for the purpose of private study or research, no part may be reproduced without the written permission. The content is provided for information purposes only.