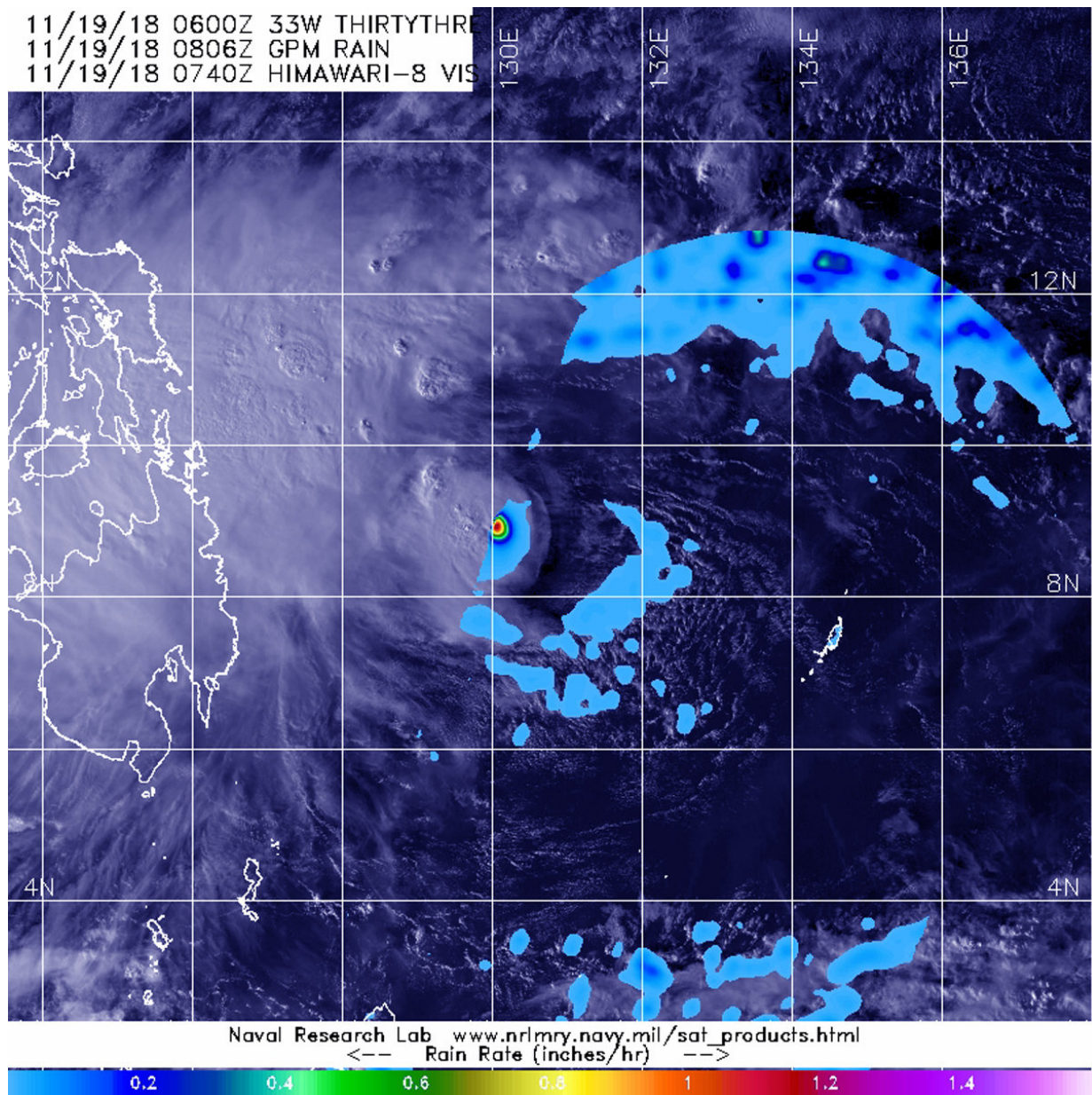


GPM satellite sees light rain occurring in Tropical Depression 33W's eastern side

November 19 2018



The GPM core observatory satellite measured that rainfall rates in the eastern half of Tropical Depression 33W on Nov. 19 at 3:06 a.m. EST (0806 UTC) and found that the heaviest rainfall was occurring around the center at a rate of 1.2 inches per hour (red) while light rain was occurring throughout much of the eastern half of the storm. The bulk of the storm appears to be in the western quadrant. Credit: NASA/JAXA/NRL

The Global Precipitation Measurement mission or GPM core satellite is providing data on rain rates within Tropical Cyclone 33W as it moves over the Philippines on Nov. 19.

Tropical Depression 33W is about to traverse the south-central Philippines. In the Philippines, 33W is designated "Samuel."

The GPM satellite passed over the eastern half of Tropical Depression 33W on Nov. 19 at 3:06 a.m. EST (0806 UTC) and measured the rainfall rates. The heaviest rainfall was occurring around the center at a rate of 1.2 inches per hour while light rain was occurring throughout much of the eastern half of the storm. The bulk of the clouds and showers associated with 33W are located in the storm's western quadrant.

GPM is a joint [satellite](#) mission between NASA and the Japan Aerospace Exploration Agency called JAXA.

At 10 a.m. EST (1500 UTC), the center of 33W was located near latitude 9.1 degrees north and longitude 129.7 degrees east. 33W is moving toward the west-northwest and has maximum sustained winds near 30 knots (34.5 mph/55.5 kph)

Philippines storm signal 1 has been placed in effect for Luzon that includes Masbate, and for the Visayas region that includes Samar,

Eastern Samar, Biliran, Leyte, Southern Leyte, Bohol, Cebu, Siquijor, Negros Oriental and Occidental. In the Mindanao region, Signal 1 is in effect for Surigao del Norte and Sur, Agusan del Norte and Sur, Dinagat Islands, Misamis Oriental and Camiguin

33W will move west-northwest, later west and into the South China Sea.

Provided by NASA's Goddard Space Flight Center

Citation: GPM satellite sees light rain occurring in Tropical Depression 33W's eastern side (2018, November 19) retrieved 26 April 2024 from <https://phys.org/news/2018-11-gpm-satellite-tropical-depression-33w.html>

This document is subject to copyright. Apart from any fair dealing for the purpose of private study or research, no part may be reproduced without the written permission. The content is provided for information purposes only.