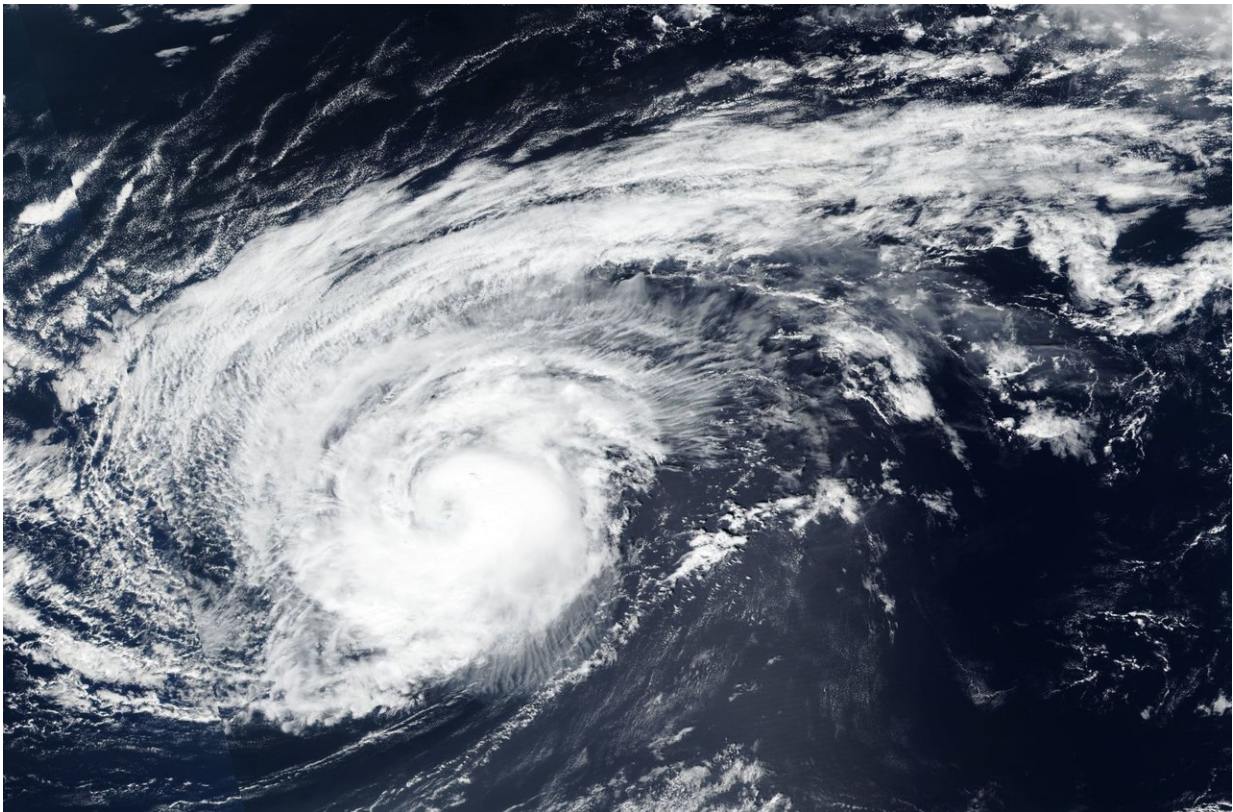


Suomi-NPP satellite finds Hurricane Leslie's ragged eye

October 11 2018



NASA-NOAA's Suomi NPP satellite provided a visible image of the very large Hurricane Leslie on Oct. 10 as it continued to linger in the Eastern Atlantic. Credit: NASA Worldview, Earth Observing System Data and Information System (EOSDIS)/ NOAA

Hurricane Leslie had a ragged eye on imagery from NASA-NOAA's

Suomi-NPP satellite when it passed over the Eastern Atlantic.

On Oct. 10, the Visible Infrared Imaging Radiometer Suite (VIIRS) instrument aboard NASA-NOAA's Suomi-NPP satellite looked at Leslie in visible light. Leslie is a large storm with a large area of powerful thunderstorms circling the ragged eye. Hurricane-force winds extend outward up to 30 miles (45 km) from the [center](#) and tropical-storm-force winds extend outward up to 240 miles (390 km).

On Oct. 11, the National Hurricane Center said that Leslie's structure has remained steady since the night of Oct. 10. The [hurricane](#) has a ragged banding eye surrounded by a somewhat patchy central dense overcast.

At 11 a.m. EDT (1500 UTC), the center of Hurricane Leslie was located near latitude 29.1 degrees north and longitude 38.3 degrees west. That's about 895 miles (1,440 km) southwest of the Azores Islands. The National Hurricane Center or NHC noted that Leslie is moving toward the east-northeast near 16 mph (26 kph), and this general motion with some increase in forward speed could begin by late Saturday, Oct. 13. Maximum sustained winds are near 80 mph (130 kph) with higher gusts. Little change in strength is forecast during the next 48 hours, but weakening is expected over the weekend.

Leslie is now accelerating east-northeastward on the south side of a mid-latitude trough (elongated area of low pressure) that is moving across the North Atlantic. By 48 hours (Oct. 13) and onward, Leslie will be moving into a far more stable environment and over cooler waters, so steady weakening is anticipated.

Provided by NASA's Goddard Space Flight Center

Citation: Suomi-NPP satellite finds Hurricane Leslie's ragged eye (2018, October 11) retrieved

27 April 2024 from

<https://phys.org/news/2018-10-suomi-npp-satellite-hurricane-leslie-ragged.html>

This document is subject to copyright. Apart from any fair dealing for the purpose of private study or research, no part may be reproduced without the written permission. The content is provided for information purposes only.