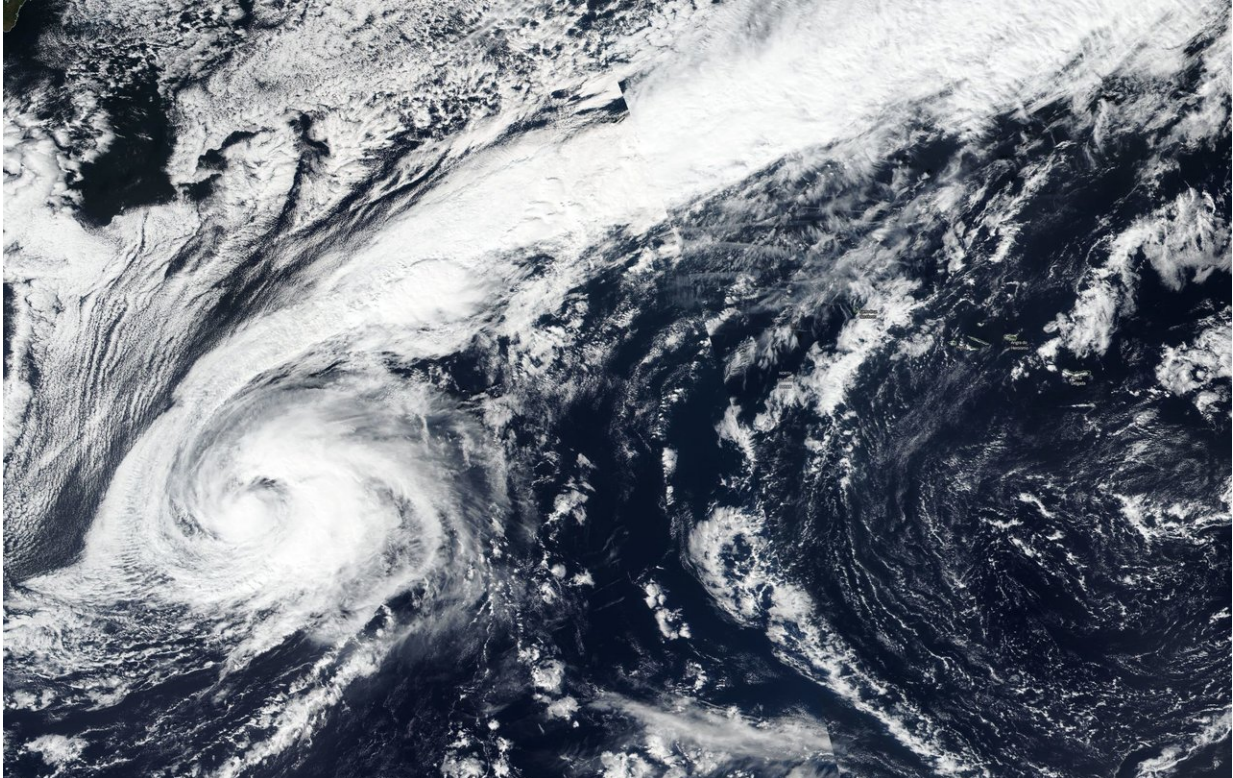


NASA gets tropical storm Leslie by the tail

October 9 2018



On Oct. 8, 2018 the VIIRS instrument aboard NASA-NOAA's Suomi satellite provided a visible look at Tropical Storm Leslie that showed a developing eye and clouds associated with an elongated area of low pressure that extends over the United Kingdom. Credit: NASA Worldview, Earth Observing System Data and Information System (EOSDIS)

What appears to be a long tail in satellite imagery of Tropical Storm Leslie is in fact clouds associated with a nearby elongated area of low

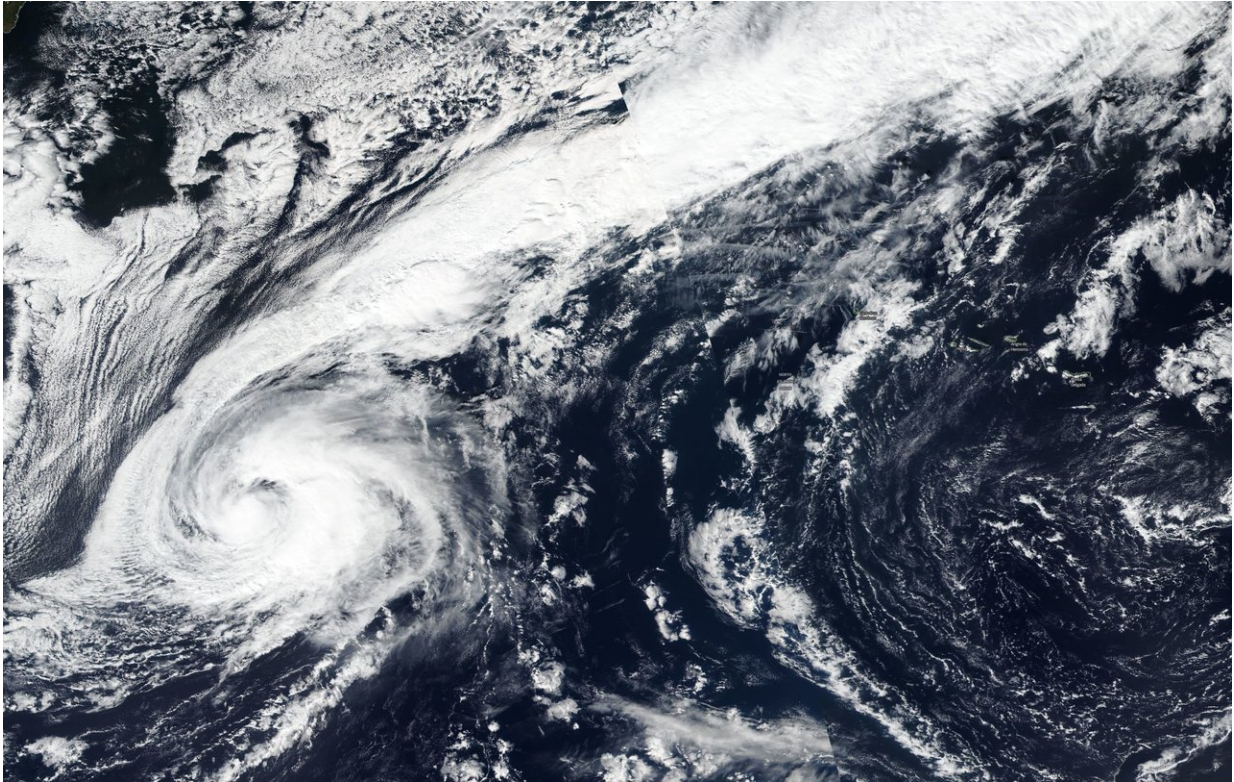
pressure, or a trough.

On Oct. 8, the VIIRS instrument aboard NASA-NOAA's Suomi satellite provided a visible look at Tropical Storm Leslie that showed a developing eye and a long stretch of clouds associated with an elongated area of [low pressure](#) that extends over the United Kingdom.

NOAA's National Hurricane Center noted "Although the winds have not yet increased, the surface center of the tropical [storm](#) has become more embedded within its cold cloud tops and several recent microwave overpasses indicate that the cyclone is beginning to establish an inner-core. Strengthening is therefore still expected, and Leslie is forecast to become a hurricane by tomorrow."

At 11 a.m. EDT (1500 UTC) on Oct. 9 the [center](#) of Tropical Storm Leslie was located near latitude 31.3 degrees north and longitude 43.5 degrees west. That's 1,045 miles (1,680 km) west-southwest of the Azores Islands. Leslie is moving toward the south-southeast near 13 mph (20 kph), and this general motion is expected to continue for the next day or so. Maximum sustained winds are near 65 mph (100 kph) with higher gusts. Some strengthening is anticipated, and Leslie is forecast to become a [hurricane](#) again on Wednesday.

The National Hurricane Center cites different [forecast](#) modeling possibilities for Leslie. It could merge with a trough or elongated area of low pressure or Leslie could remain a tropical cyclone almost indefinitely if it continues meandering over the northern Atlantic.



On Oct. 8, 2018 the VIIRS instrument aboard NASA-NOAA's Suomi satellite provided a visible look at Tropical Storm Leslie that showed a developing eye and clouds associated with an elongated area of low pressure that extends over the United Kingdom. Credit: NASA Worldview, Earth Observing System Data and Information System (EOSDIS)

Provided by NASA's Goddard Space Flight Center

Citation: NASA gets tropical storm Leslie by the tail (2018, October 9) retrieved 27 April 2024 from <https://phys.org/news/2018-10-nasa-tropical-storm-leslie-tail.html>

This document is subject to copyright. Apart from any fair dealing for the purpose of private study or research, no part may be reproduced without the written permission. The content is

provided for information purposes only.