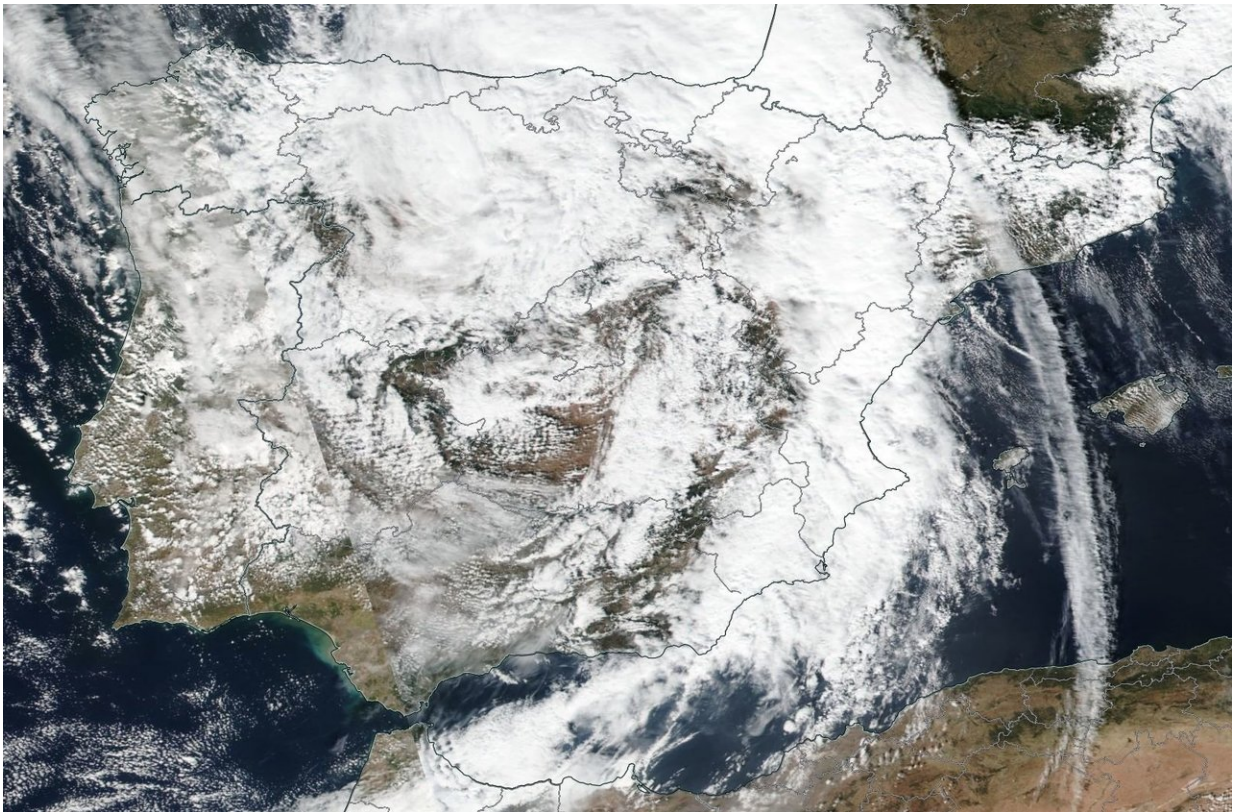


# NASA sees remnants of Post-Tropical Cyclone Leslie over Spain

October 15 2018

---



NASA-NOAA's Suomi NPP satellite passed over Post-tropical Cyclone Leslie on Oct. 13, 2018 and the VIIRS instrument provided a visible image of the storm. The VIIRS image showed a disorganized low pressure area over the Iberian Peninsula, covering Portugal and Spain. Credit: NASA

Post-tropical cyclone Leslie made landfall in Portugal bringing heavy

rains and hurricane-force winds. On Oct. 14, NASA-NOAA's Suomi NPP satellite spotted the remnant clouds over northern Spain.

Post-tropical cyclone Leslie made landfall at night on Oct. 13, local time. Leslie's winds left 300,000 without power in Portugal and brought heavy rain. Lisbon, Leiria and Coimbra received the strongest winds.

Suomi NPP passed over Leslie on Oct. 13 and the Visible Infrared Imaging Radiometer Suite (VIIRS) instrument provided a visible image of the storm. The VIIRS image showed a disorganized low pressure area over the Iberian Peninsula, covering Portugal and Spain.

On Oct. 15, the remnants were bringing downpours to southern Spain and western Italy down to Sicily. The remnants continue to move east through the Mediterranean Sea.

Provided by NASA's Goddard Space Flight Center

Citation: NASA sees remnants of Post-Tropical Cyclone Leslie over Spain (2018, October 15) retrieved 25 April 2024 from <https://phys.org/news/2018-10-nasa-remnants-post-tropical-cyclone-leslie.html>

This document is subject to copyright. Apart from any fair dealing for the purpose of private study or research, no part may be reproduced without the written permission. The content is provided for information purposes only.