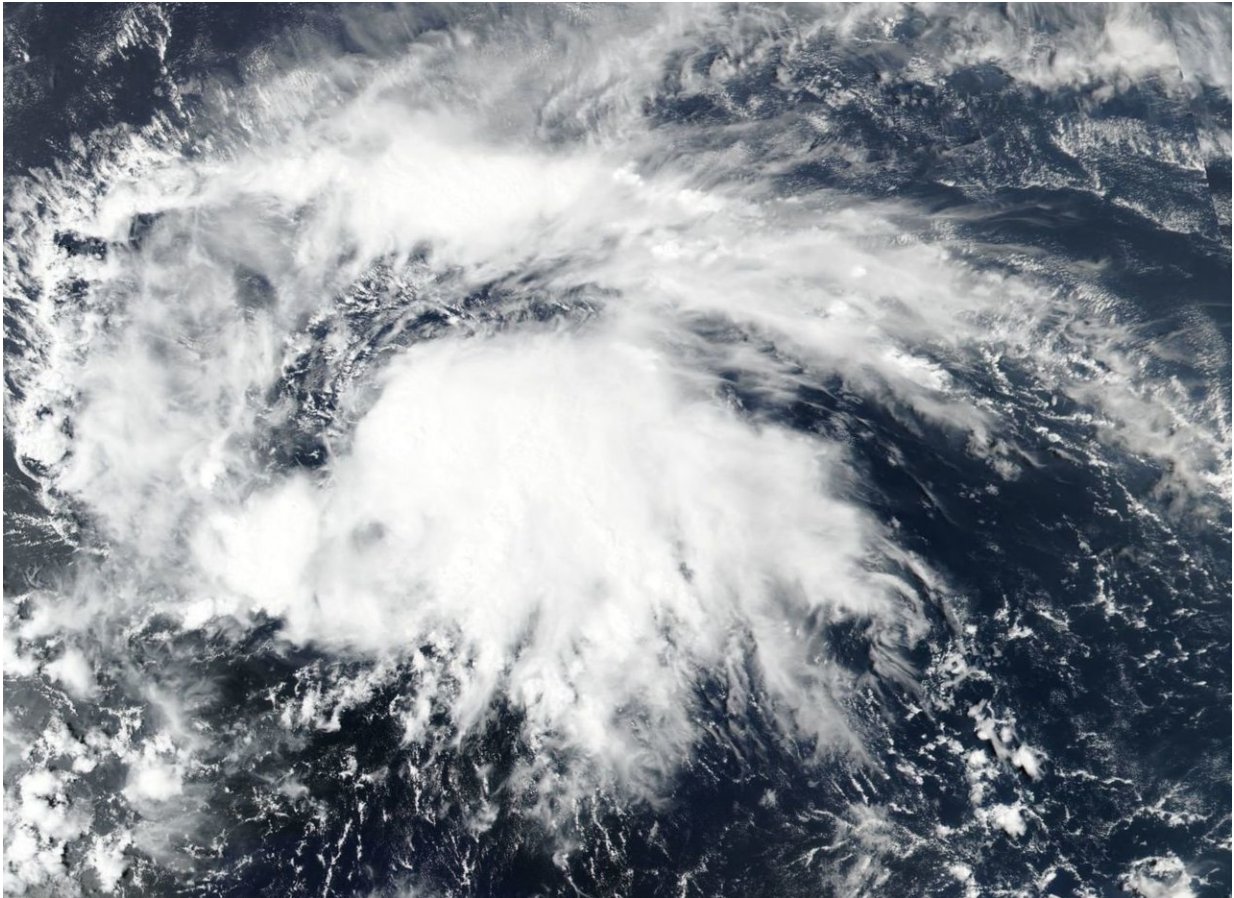


Suomi NPP satellite observes rebirth of Tropical Storm Kirk, warnings up

September 26 2018



On Sept. 25 at 1:30 p.m. EDT (1530 UTC) NASA-NOAA's Suomi NPP satellite provided a visible image of Tropical Storm Kirk as it was re-forming in the Atlantic Ocean. Credit: NASA Worldview, Earth Observing System Data and Information System (EOSDIS)

NASA-NOAA's Suomi NPP satellite passed over Tropical Storm Kirk as it was regenerating in the Atlantic Ocean. Because Kirk regenerated east of the Caribbean Sea, warnings and watches were posted for the Lesser Antilles.

On Sept. 25 at 12:30 p.m. EDT (1630 UTC) the Visible Infrared Imaging Radiometer Suite (VIIRS) instrument aboard NASA-NOAA's Suomi NPP satellite provided a visible light image of re-forming Tropical Storm Kirk. The VIIRS image showed central convection and forming thunderstorms around the center of circulation.

Kirk officially regenerated on Sept. 26 at 5 a.m. EDT as a [tropical storm](#). At that time NOAA's National Hurricane Center or NHC noted "two earlier ASCAT scatterometer [instrument] passes between [8 p.m. and 9 p.m. EDT on Sept. 25] 0000-0100Z on Sept 26 indicated that the low-level center had become a little better defined, and that the inner-core wind field had contracted, now with a radius of maximum winds of about 40 nautical miles. Given the continued increase in the amount and organization of the deep convection, advisories have be re-initiated on Tropical Storm Kirk."

A Tropical Storm Warning is in effect for Barbados, St. Lucia, Dominica, Martinique and Guadeloupe. A Tropical Storm Watch is in effect for St. Vincent and the Grenadines.

At 11 a.m. EDT (1500 UTC) on Sept. 26 the center of Tropical Storm Kirk was located near latitude 12.1 degrees north and longitude 54.3 degrees west. That's about 360 miles (575 km) east-southeast of Barbados and 485 miles (780 km) east-southeast of Martinique.

Kirk is moving toward the west near 18 mph (30 kph). A westward to west-northwestward motion is expected over the next few days. On the forecast track, the center will move over the Lesser Antilles within the

Tropical Storm Warning area Thursday night. Maximum sustained winds have increased to near 50 mph (85 kph) with higher gusts. Little change in strength is forecast until Kirk crosses the Lesser Antilles, followed by weakening over the eastern Caribbean Sea.

Provided by NASA's Goddard Space Flight Center

Citation: Suomi NPP satellite observes rebirth of Tropical Storm Kirk, warnings up (2018, September 26) retrieved 16 June 2024 from <https://phys.org/news/2018-09-suomi-npp-satellite-rebirth-tropical.html>

This document is subject to copyright. Apart from any fair dealing for the purpose of private study or research, no part may be reproduced without the written permission. The content is provided for information purposes only.