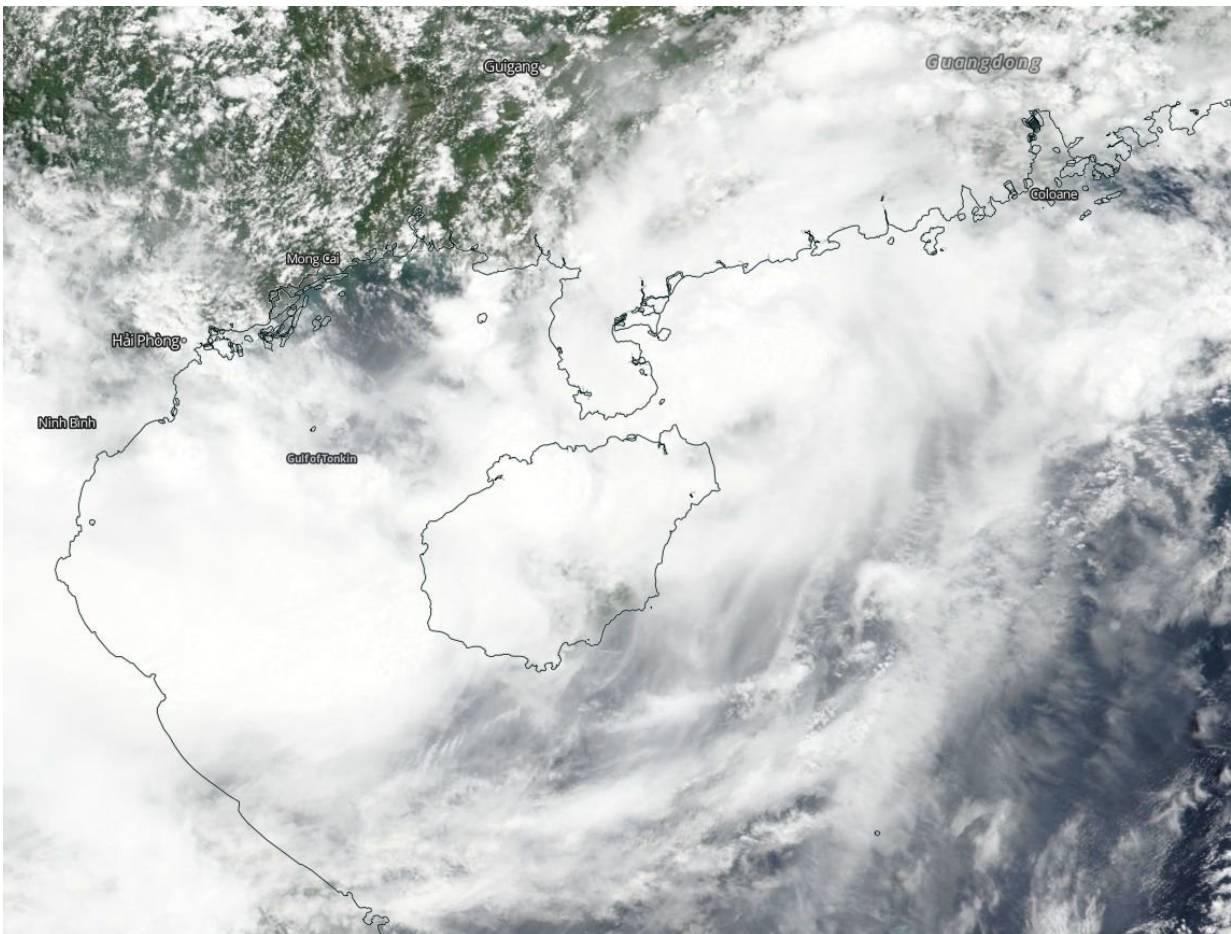


NASA sees Tropical Storm Bebinca still near Hainan Island

August 15 2018



On Aug. 14, NASA-NOAA's Suomi NPP satellite flew over Tropical Storm Bebinca moving west over western Hainan Island, China and mainland China. Credit: NASA/NOAA Worldview

Tropical Storm Bebinca continues to rain on Hainan Island, China and has been doing so for days. On Aug. 15, when NASA-NOAA's Suomi NPP satellite flew overhead it captured a visible image of the storm.

The Visible Infrared Imaging Radiometer Suite (VIIRS) instrument aboard NASA-NOAA's Suomi NPP satellite captured a [visible image](#) of Bebinca that showed a center surrounded by powerful thunderstorms. The northern quadrant of Bebinca extended into the mainland of southern China and the western quadrant extended over Hainan Island in the South China Sea.

On Aug. 15 at 5 a.m. EDT (0900 UTC), the Joint Typhoon Warning Center reported the center of Tropical Storm Bebinca was located near latitude 20.9 degrees north and longitude 111.2 degrees west. That's about 170 nautical miles southwest of Hong Kong, China. The tropical [storm](#) is moving toward the west-northwest. Maximum sustained winds were near 40 mph (35 knots/62 kph).

Bebinca is expected to move west through the Gulf of Tonkin and make landfall in Vietnam, tracking south of Hanoi.

Provided by NASA's Goddard Space Flight Center

Citation: NASA sees Tropical Storm Bebinca still near Hainan Island (2018, August 15) retrieved 28 June 2024 from <https://phys.org/news/2018-08-nasa-tropical-storm-bebinca-hainan.html>

This document is subject to copyright. Apart from any fair dealing for the purpose of private study or research, no part may be reproduced without the written permission. The content is provided for information purposes only.