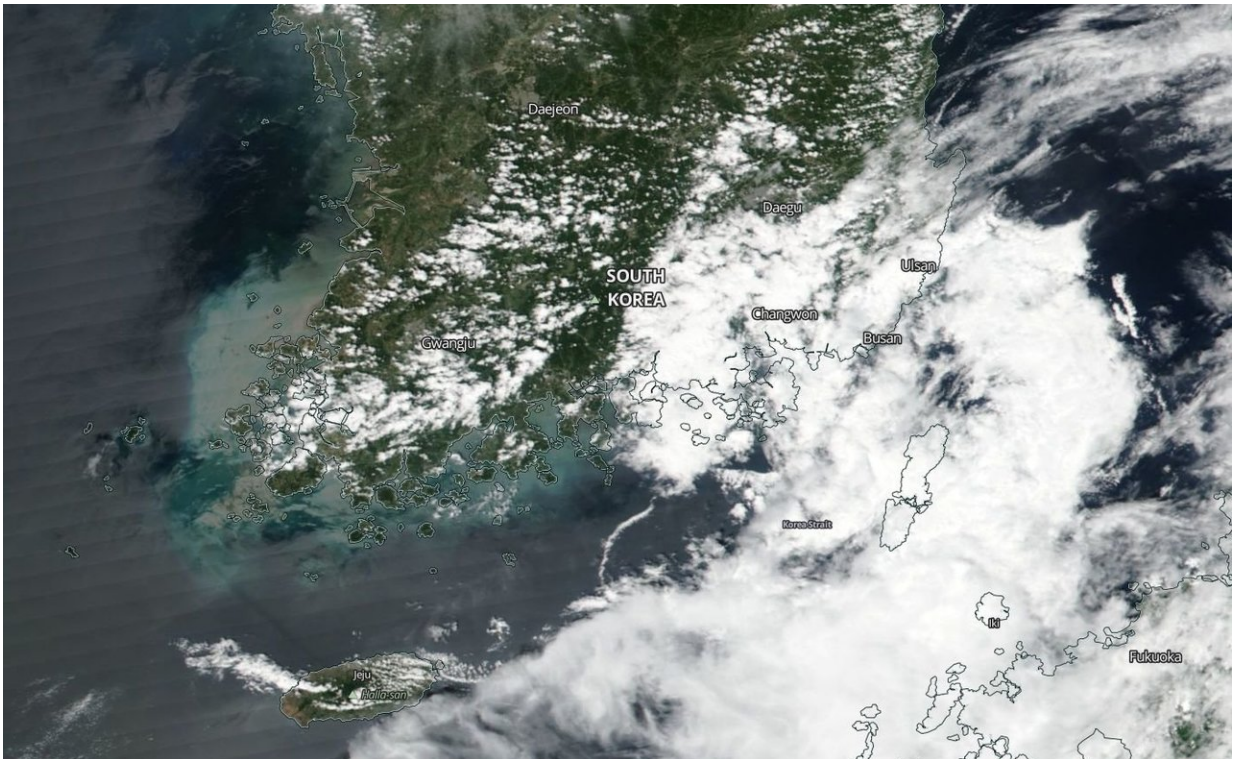


NASA catches Tropical Depression Leepi nearing landfall

August 15 2018



On Aug. 14, NASA-NOAA's Suomi NPP satellite flew over Tropical Depression Leepi moving over southeastern South Korea. The image captured showed a disorganized depression. Credit: NASA/NOAA Worldview

Tropical Depression Leepi was nearing landfall in southern South Korea on Aug. 15, when NASA-NOAA's Suomi NPP satellite flew overhead.

The Visible Infrared Imaging Radiometer Suite (VIIRS) instrument aboard NASA-NOAA's Suomi NPP satellite captured a visible image of Leepi a shapeless Tropical Depression. Limited convection and clouds are being pushed to the south of the center from northerly vertical wind shear.

On Aug. 15 at 5 a.m. EDT (0900 UTC), the Joint Typhoon Warning Center reported the center of Tropical Depression Leepi was located near latitude 35.3 degrees north and longitude 129.7 degrees west. That's about 19 nautical miles southeast of Busan, South Korea. The [depression](#) is moving toward the north-northwest. Maximum sustained winds were near 34.5 mph (30 knots/55.5 kph).

Leepi is expected to be absorbed into a mid-latitude cyclone by Aug. 17.

Provided by NASA's Goddard Space Flight Center

Citation: NASA catches Tropical Depression Leepi nearing landfall (2018, August 15) retrieved 24 May 2024 from <https://phys.org/news/2018-08-nasa-tropical-depression-leepi-nearing.html>

<p>This document is subject to copyright. Apart from any fair dealing for the purpose of private study or research, no part may be reproduced without the written permission. The content is provided for information purposes only.</p>
--