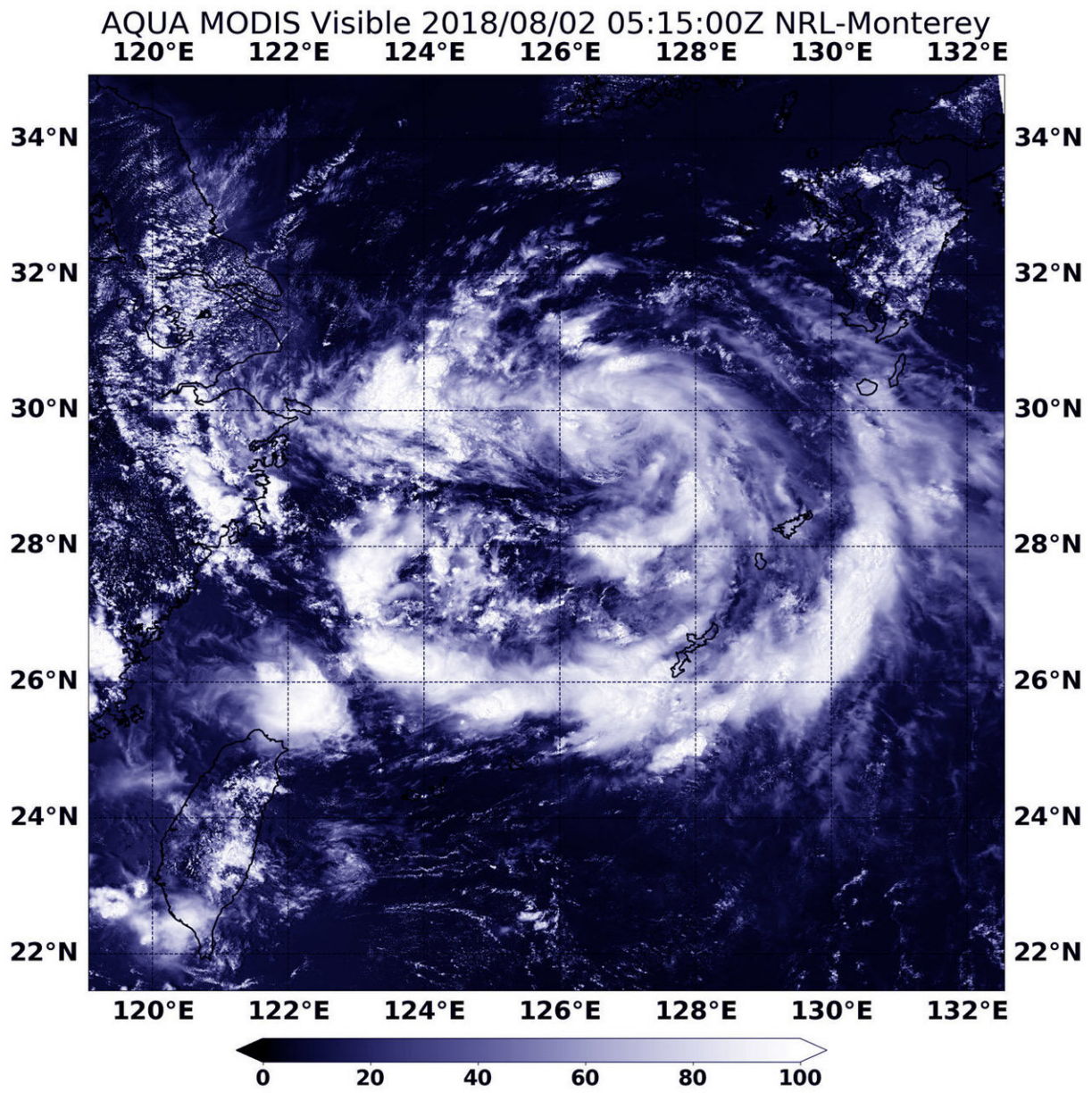


NASA sees Tropical Depression Jongdari nearing China landfall

August 2 2018



On Aug. 2 at 1:15 a.m. EDT (0515 UTC) NASA's Terra satellite provided a visible image of Jongdari. The image revealed a weak low level circulation and a small area of thunderstorms around the center of circulation. There is also a shallow curved a band of thunderstorms southeast of the center. Credit: NASA/NRL

Tropical Depression Jongdari continued it crawl toward a landfall in China and NASA's Terra satellite captured an image of the disorganized depression. Warnings are in effect in China as Jongdari approaches.

On Aug. 2 at 1:15 a.m. EDT (0515 UTC) the Moderate Resolution Imaging Spectroradiometer of MODIS instrument aboard NASA's Terra satellite provided a [visible image](#) of Jongdari. The image revealed a weak low level circulation and a small area of thunderstorms around the center of circulation. There is also a shallow curved a band of thunderstorms to the southeast of the center.

On Aug. 2 at 11 a.m. EDT (1500 UTC) the Joint Typhoon Warning Center or JTWC noted that Jongdari's maximum sustained winds were near 30 knots (34.5 mph/55.5 kph). Jongdari was centered near 30.1 degrees north latitude and 124.8 degrees east longitude. The tropical depression was located approximately 237 nautical miles north-northwest of Kadena Air Base, Japan. Jongdari was moving to the west-northwest.

JTWC is now expected to make landfall just north of Shanghai, China early on Aug. 3.

The National Meteorological Center continued to issue blue warning of Typhoon, which is a general warning for a tropical cyclone. The [warning](#)

noted "There will be scale 6-7 gale in most coastal regions of East China Sea and southwestern Huanghuai Sea from August 2 to 3. Heavy rain to rainstorm (50 to 80 mm) will pound northeastern Zhejiang, Shanghai, and southeastern Jianguo."

Provided by NASA's Goddard Space Flight Center

Citation: NASA sees Tropical Depression Jongdari nearing China landfall (2018, August 2)
retrieved 24 April 2024 from

<https://phys.org/news/2018-08-nasa-tropical-depression-jongdari-nearing.html>

This document is subject to copyright. Apart from any fair dealing for the purpose of private study or research, no part may be reproduced without the written permission. The content is provided for information purposes only.