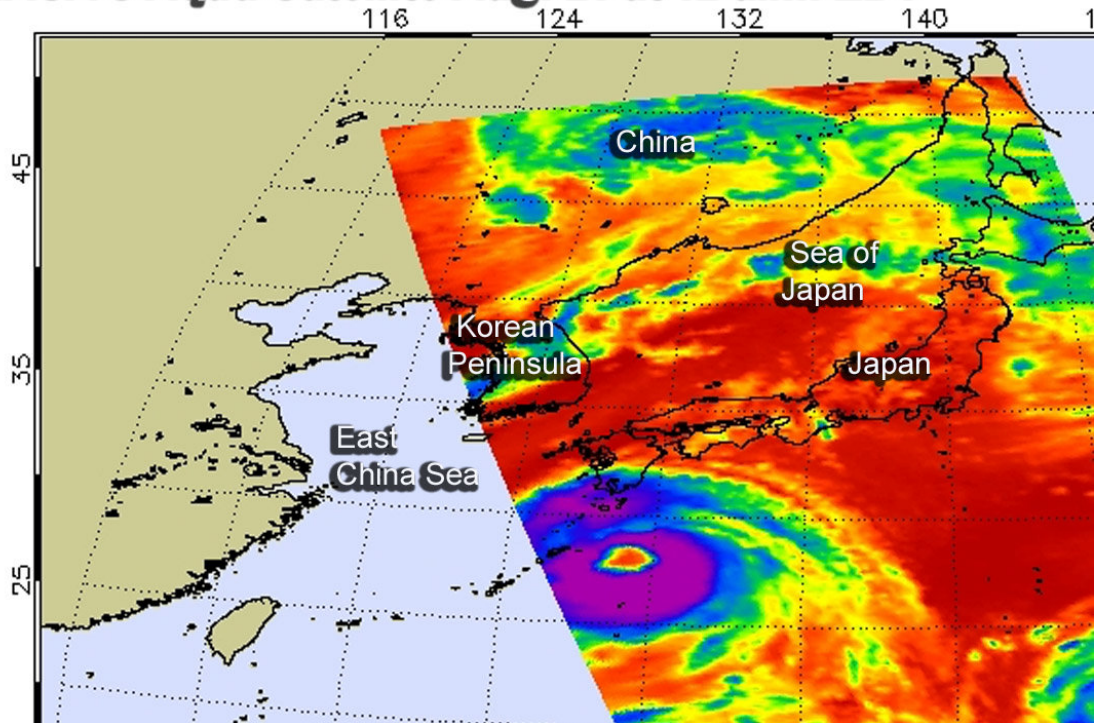


# NASA sees a 50 mile wide eye in Typhoon Soulik

August 21 2018

*Infrared image from the AIRS instrument aboard NASA's Aqua Satellite Aug. 21 at 12 a.m. EDT*



On Aug. 21 at 12:00 a.m. EDT (0400 UTC) the AIRS instrument aboard NASA's Aqua satellite showed very strong thunderstorms (purple) as cold as or colder than minus 63 degrees Fahrenheit (minus 53 Celsius) surrounding Typhoon Soulik's 50 mile wide eye. Credit: NASA JPL, Heidar Thrastarson

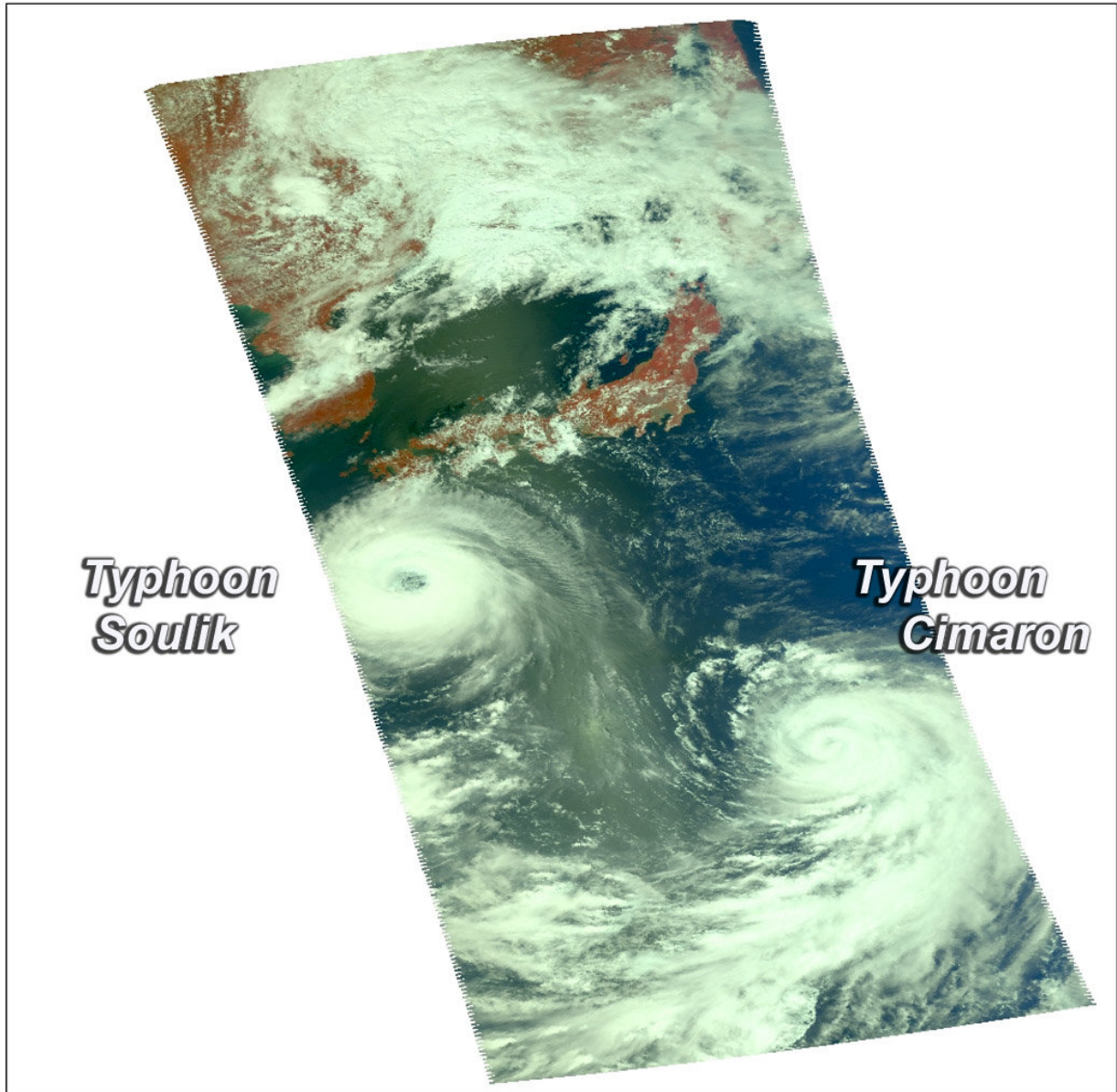
NASA's Aqua satellite provided forecasters with a look at Typhoon Soulik's cloud top temperatures and 50 nautical-mile wide eye as it passed overhead on Aug. 21.

The Atmospheric Infrared Sounder or AIRS instrument observed Typhoon Soulik in [infrared light](#) which measures cloud top temperatures. The colder the cloud top, the higher it extends in the troposphere. High cloud tops indicate powerful uplift of air in the storm.

Enhanced infrared satellite imagery showed very strong thunderstorms as cold as or colder than minus 63 degrees Fahrenheit (minus 53 Celsius) surrounding Typhoon Soulik's 50 mile wide eye. Imagery also showed spiral banding of thunderstorms wrapping around the eye with a partially eroded eye wall in the western side. A microwave image depicts a symmetric system with a well-defined microwave eye feature, which supports the initial position with good confidence.

On Aug. 21 at 11 a.m. EDT (1500 UTC) Joint Typhoon Warning Center or JTWC noted Typhoon Soulik was located approximately 194 nautical miles north-northeast of Kadena Air Base, has tracked northwestward at 15 mph (13 knots/24 kph). Maximum sustained winds were near 109 mph (95 knots/176 kph).

JTWC said Soulik will slowly weaken before turning north and making landfall near Seoul, South Korea.



On Aug. 21 at 12:00 a.m. EDT (0400 UTC) the AIRS instrument aboard NASA's Aqua satellite passed over the Northwestern Pacific Ocean and saw Typhoon Soulik's 50 mile wide eye and Typhoon Cimaron to the southeast.  
Credit: NASA JPL, Heidar Thrastarson

Provided by NASA's Goddard Space Flight Center

Citation: NASA sees a 50 mile wide eye in Typhoon Soulik (2018, August 21) retrieved 12 May 2024 from <https://phys.org/news/2018-08-nasa-mile-wide-eye-typhoon.html>

This document is subject to copyright. Apart from any fair dealing for the purpose of private study or research, no part may be reproduced without the written permission. The content is provided for information purposes only.