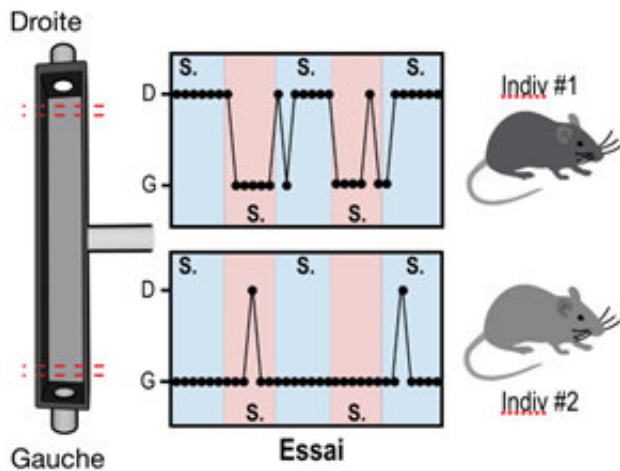


Mice individuality is influenced by their relations

August 6 2018



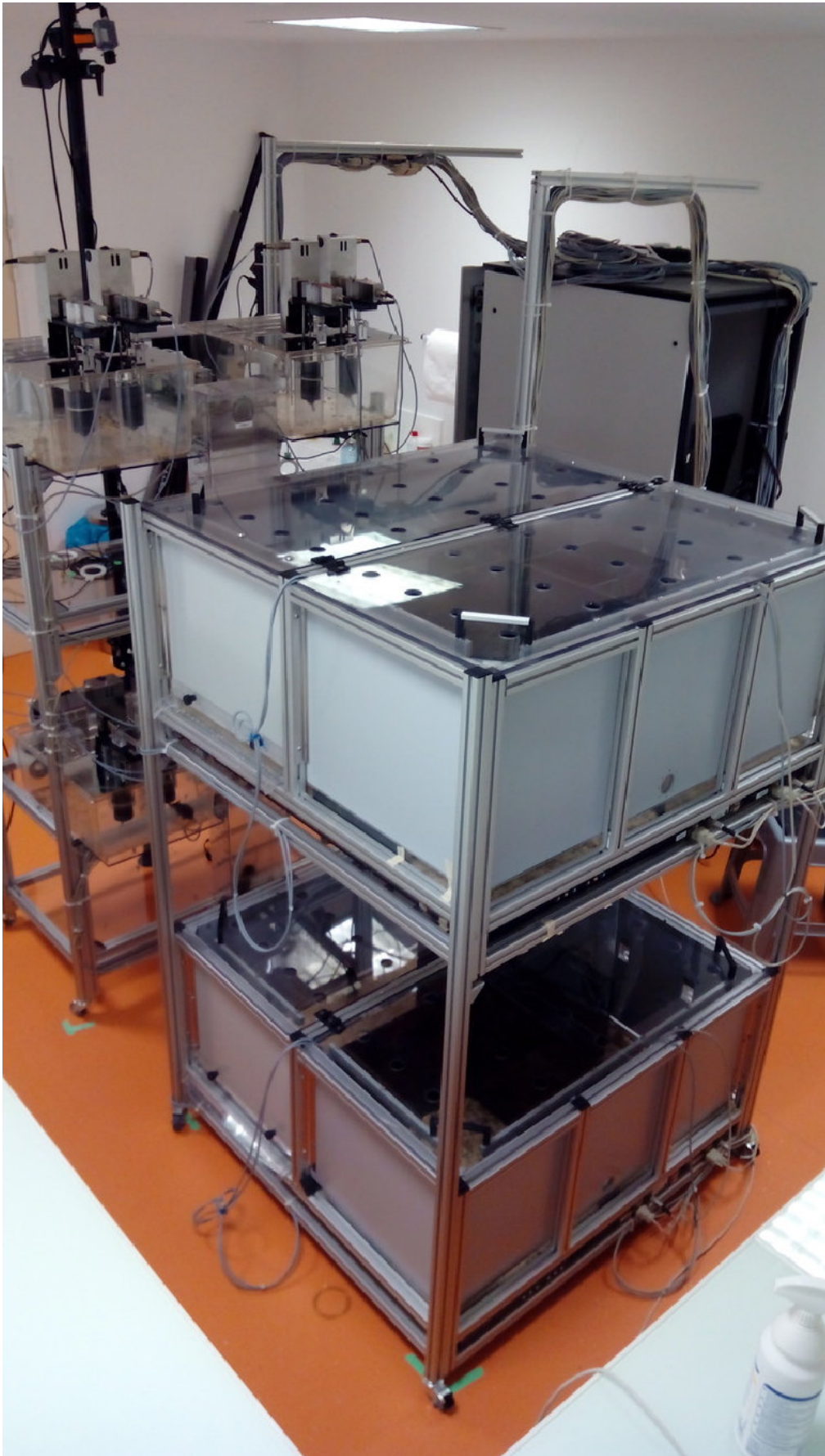
When we ask mice to choose between sweetened water and plain water, and the position of these rewards alternates between right and left, we can distinguish animals that follow the sugar and therefore alternate between right and left (Indiv #1), and animals that almost always choose the same side, regardless of the drink (Indiv #2). Credit: Nicolas Torquet/NPS

Individuality is not exclusive to humans. Though this idea was previously rebutted by biologists, today, it is accepted that individuality is found in all animal species. It is defined as all the behavior differences between individuals of a single species that are relatively stable over time. Though the process, called individuation, is supported by genetic and development components, researchers have just demonstrated in mice that the social environment and activity of some neurons also participate

in determining the emergence of distinct individuals.

To reach this conclusion, teams at Laboratoire Neurosciences Paris-Seine (CNRS/INSERM/Sorbonne Université), Laboratoire Adaptation Biologique et Vieillesse (CNRS/Sorbonne Université) and at Sorbonne Université's Institut de la Longévité at Hôpital Charles Foix (AP-HP) studied the life of mice living in "Souris City" (Souris is the French word for mouse), an innovative experimental device with two common living spaces for the animals, and an option to make them take a test one by one without human intervention. It is by means of this test that the researchers have identified different "personalities" among the mice. This device includes a T-shaped maze where the mice had to choose one of the two arms; one led to normal water, and the other led to sweetened water. These two positions were alternated regularly. When faced with this problem, two radically different strategies emerged: some mice varied their choice very often, others hardly ever.

The first thing that the authors observed was that the type of behavior adopted by each individual was correlated to the [activity](#) of dopamine-producing neurons, which are especially involved in decision-making. For example, the mice that alternated the most had lower dopaminergic activity. Therefore, one can say that mice have biologically inscribed individuality.



Souris City: a common living system, composed of two 1m² cages on the floor, where the animals have access to an automatic test area in a T-shaped maze.

Credit: Nicolas Torquet/NPS

To understand the role of mice's social environment on the development of these individualities, the researchers continued their experiments by changing the composition of the groups in Souris City. They grouped the individuals who adopted the same test strategy, those who rarely alternated on one side, and those who alternated often on the other. Surprise! After a few weeks, roles had redistributed in both groups! Some mice who had rarely varied their choice had become the more adventurous ones in their new group, and vice versa.

More surprisingly, this behavior change was correlated with a change in dopamine pathway activity in the [mice](#). These results suggest that decision-making mechanisms, behavioral repertoires and activity levels in the nervous systems of each individual are far from being set, and adapt according to the social structure in which the animals evolve.

The fact that the social environment contributes to differences between the individuals has implications for sociology, psychology, biology and medicine. Social factors also participate in the development of psychiatric pathologies such as addiction. This is a field that the researchers are going to investigate, studying the influence of [social environment](#) on vulnerability to drugs.

More information: N. Torquet et al, Social interactions impact on the dopaminergic system and drive individuality, *Nature Communications* (2018). [DOI: 10.1038/s41467-018-05526-5](https://doi.org/10.1038/s41467-018-05526-5)

Provided by CNRS

Citation: Mice individuality is influenced by their relations (2018, August 6) retrieved 28 June 2024 from <https://phys.org/news/2018-08-mice-individuality.html>

This document is subject to copyright. Apart from any fair dealing for the purpose of private study or research, no part may be reproduced without the written permission. The content is provided for information purposes only.