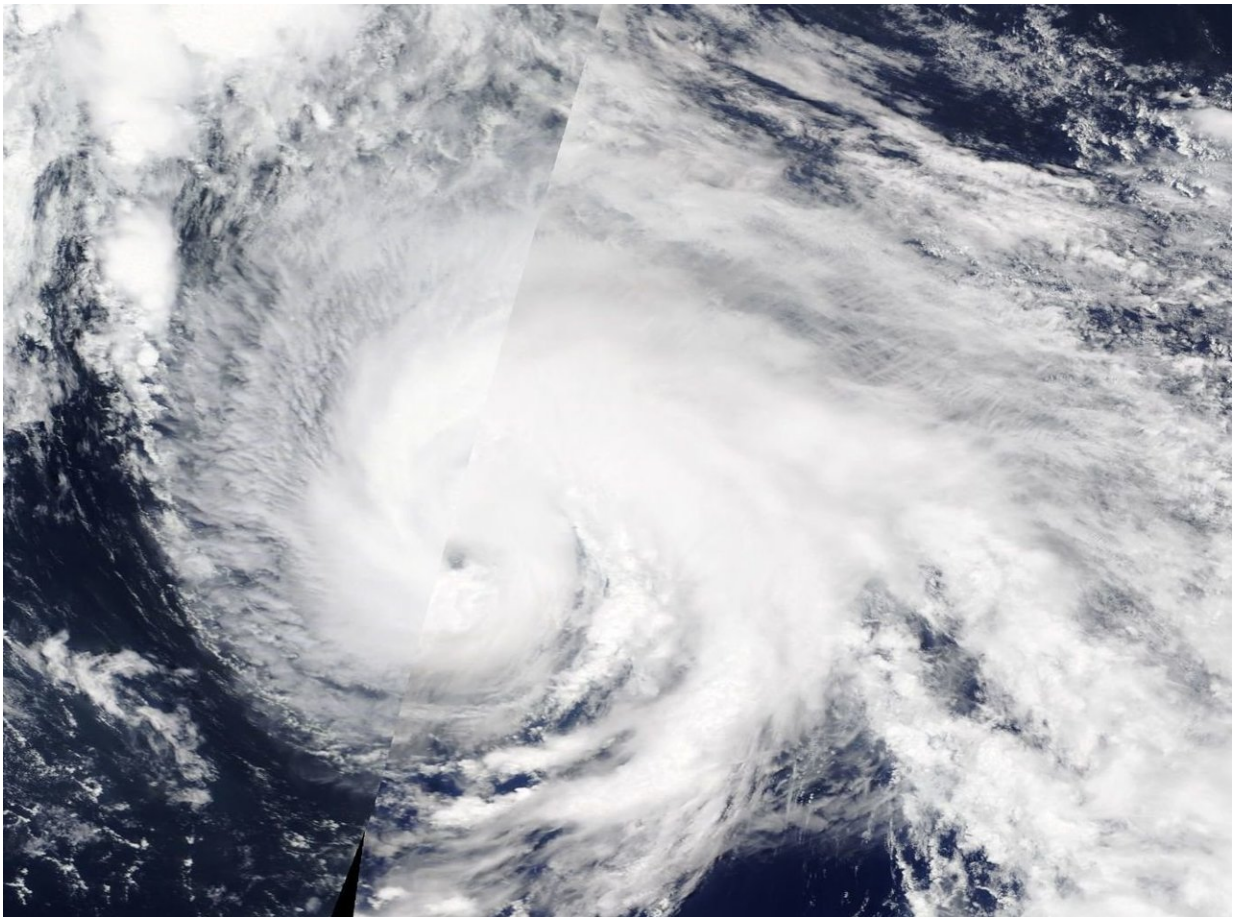


Typhoon Wukong opens an Eye to NASA's Terra satellite

July 25 2018



NASA's Terra satellite provided a visible look at Typhoon Wukong in the Northwestern Pacific Ocean on July 25. The eye of the typhoon was clearly visible in the image. Credit: NASA

When NASA's Terra satellite passed over the Northwestern Pacific Ocean it found that Typhoon Wukong developed an eye.

On July 25, the Moderate Resolution Imaging Spectroradiometer or MODIS instrument aboard NASA's Terra satellite obtained a visible image of Typhoon Wukong. The eye of the [typhoon](#) was clearly visible in the image and forecasters at the Joint Typhoon Warning Center estimated the eye at 25 nautical miles in diameter.

On July 25, 2018 at 5 a.m. EDT (0900 UTC) Typhoon Wukong was located near 33.9 degrees north latitude and 157.8 degrees east longitude, about 615 miles north-northeast of Minami Tori Shima Island, Japan. It was moving to the north at 12 knots (13.8 mph/22.2 kph) and had maximum sustained winds near 65 knots (75 mph/120.4 kph).

The Joint Typhoon Warning Center forecast noted that Wukong will continue moving in a northerly direction and quickly weaken as it tracks over cooler waters. Wukong is forecast to transition into an extra-tropical system in the next day and a half and merge with a 500 millibar low pressure system.

Provided by NASA's Goddard Space Flight Center

Citation: Typhoon Wukong opens an Eye to NASA's Terra satellite (2018, July 25) retrieved 26 April 2024 from <https://phys.org/news/2018-07-typhoon-wukong-eye-nasa-terra.html>

This document is subject to copyright. Apart from any fair dealing for the purpose of private study or research, no part may be reproduced without the written permission. The content is provided for information purposes only.