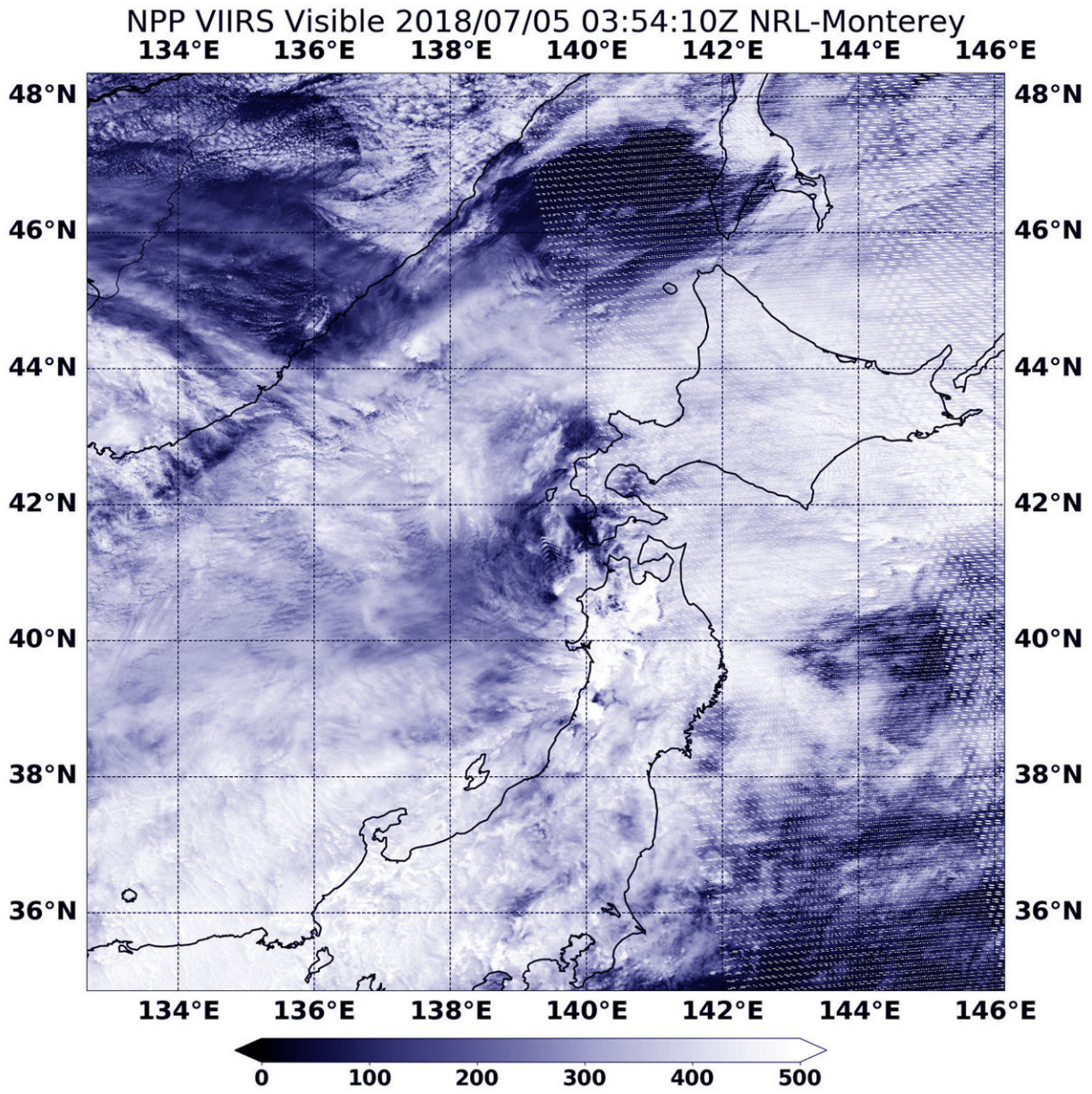


Post-tropical cyclone Prapiroon's remnants moving over northern Japan

July 5 2018



On July 5, NASA-NOAA's Suomi NPP satellite captured a visible image of the remnants of Post-Tropical Cyclone Prapiroon in the Sea of Japan as it's center neared Japan's Hokkaido Prefecture. Credit: NOAA/NASA

The remnants of Post-Tropical Cyclone Prapiroon were spotted by NASA-NOAA's Suomi NPP satellite as they were moving over Japan's Hokkaido Prefecture in northern Japan.

On July 5, the Japan Meteorological Agency noted that advisories remained for much of Hokkaido, and just the Abashiri Chiho area remained under a warning. The advisories consist of flooding, heavy rain, dense fog, and high waves in coastal areas.

On July 5 at 0354 UTC (July 4 at 11:54 p.m. EDT) the Visible Infrared Imaging Radiometer Suite (VIIRS) instrument aboard NASA-NOAA's Suomi NPP satellite captured a visible image of the remnants over northern Japan and stretching into the Northwestern Pacific Ocean.

Prapiroon's remnants continued to move in a north-northeasterly direction into the Northwestern Pacific Ocean.

Provided by NASA's Goddard Space Flight Center

Citation: Post-tropical cyclone Prapiroon's remnants moving over northern Japan (2018, July 5) retrieved 2 May 2024 from

<https://phys.org/news/2018-07-post-tropical-cyclone-prapiroon-remnants-northern.html>

This document is subject to copyright. Apart from any fair dealing for the purpose of private study or research, no part may be reproduced without the written permission. The content is provided for information purposes only.