

NE Australian marine heatwave shakes up coral reef animal populations

July 25 2018



Part of the Great Barrier Reef in the Coral Sea off NE Australia. Credit: Rick Stuart-Smith

Research published today in *Nature* describes upheaval among fish and invertebrate communities after a marine heatwave hit Australia's Great

Barrier Reef and Coral Sea in early 2016.

The IMAS-led study analysed data collected across these areas by the Reef Life Survey (RLS) citizen science program.

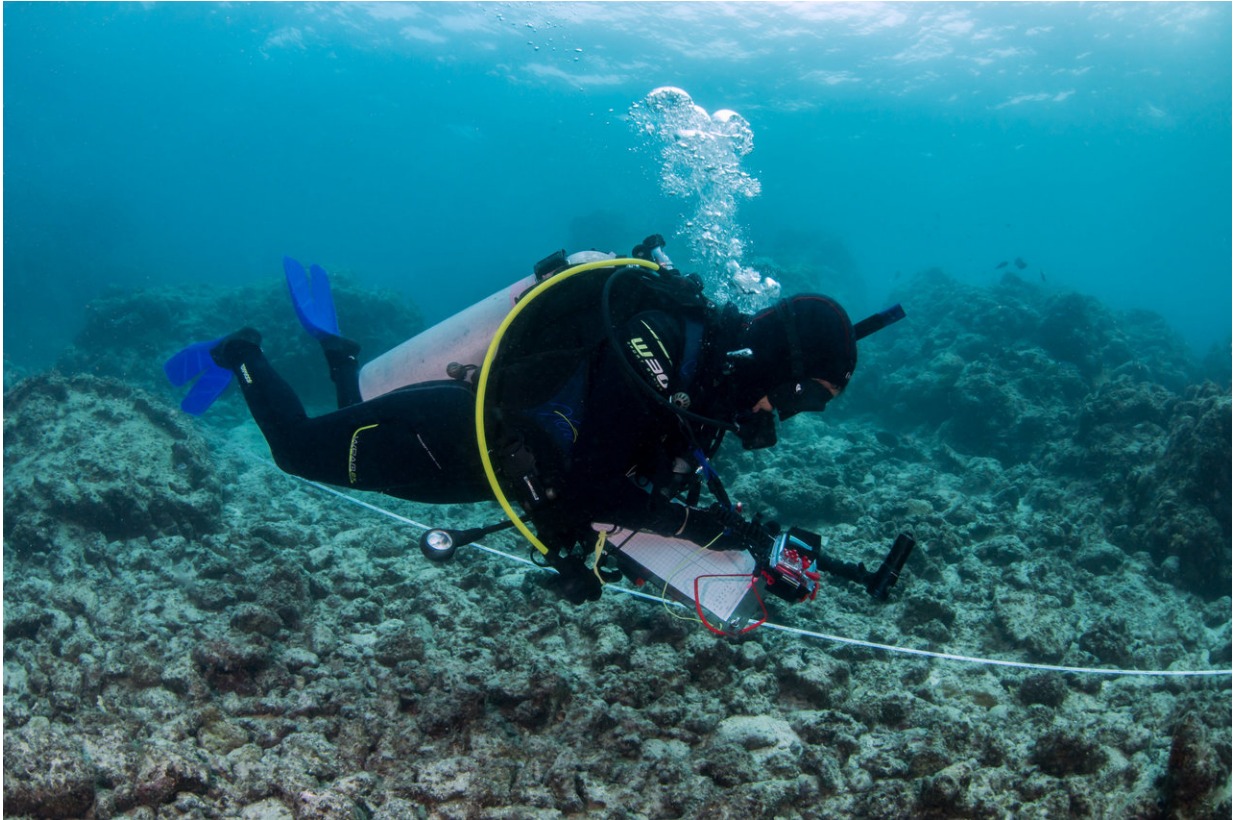
It identified important changes in reef-animal communities that may affect the resilience of [coral reefs](#), potentially reducing the capacity of corals to rebuild after mass bleaching.

Coral reefs are among the most valuable ecosystems on Earth, providing irreplaceable benefits to biodiversity and people. The World Heritage listed Great Barrier Reef is the largest coral reef system and a place of outstanding universal value.

"We know that [coral reef ecosystems](#) are changing dramatically in response to global warming, but the focus has usually been on the fate of corals, with clear impacts of mass bleaching observable from aerial images," study leader Rick Stuart-Smith said.

"We were interested in how the loss of coral compared with other changes across the full region.

"After reviewing surveys of corals, seaweed, fishes and mobile invertebrates such as sea urchins at 186 sites across the Great Barrier Reef and western Coral Sea—before and after the 2106 heatwave—we realised that coral bleaching was only part of the story.



A diver on the Great Barrier Reef conducts a survey for Reef Life Survey (RLS). Credit: Rick Stuart-Smith

"Changes were also happening around the bleached corals, to the fishes and other animals that the reefs support, and which in turn assist coral recovery."

The study's most important finding was the detection of broad regional ecosystem change that was distinct from the degree of coral loss at each site.

An overarching change was consistent across all the surveyed reefs, even those not affected by coral loss due to bleaching.

"While severe declines in live coral cover occurred on northern Great Barrier Reef reefs, losses in the northern Coral Sea were even greater," co-author and RLS survey leader, Professor Graham Edgar said.

"However even in the worst hit areas, coral losses varied greatly from reef to reef, with a few sites showing small coral gains.

"The only change in fish or invertebrates that clearly matched this patchy change in coral cover was a decline in coral-feeding fishes such as butterflyfishes.

"Other big changes related more directly to the effect of warmer temperatures on the fishes and invertebrates."



A Reef Life Survey (RLS) diver conducts a survey. Credit: Rick Stuart-Smith

An example of this change in animal populations was seen in parrotfishes, which occurred in fewer surveys across the northern reefs after the bleaching event, but this response was not directly associated with sites of [coral](#) cover loss.

These herbivorous fishes play an important 'functional' role in preventing algae from taking over and displacing corals on disturbed reefs. They appeared particularly sensitive to the warmer conditions, and their loss may affect the capacity of corals to rebuild.

"Our observations suggest that recovery processes will depend on such functional changes in reef communities, which in turn depend on how temperatures change the makeup of fish and invertebrates that live on the reefs," Dr. Stuart-Smith said.

"Although we are lucky that herbivorous fishes are not heavily targeted by fishing in Australia, our results highlight the potential for some ecologically important groups of reef animals to be disproportionately affected by warmer temperatures, particularly near the warm edge of their distributions.

"So as well as considering how to conserve and restore corals in areas affected by bleaching, we also need to consider how to maintain or build the broader [fish](#) communities that provide [reef](#) resilience.

"This may mean considering where particular species in these important groups are subject to overlapping pressures such as fishing, warming and habitat loss, to better plan protected areas or manage human pressures like fishing for a warmer future."

More information: Rick D. Stuart-Smith et al, Ecosystem restructuring along the Great Barrier Reef following mass coral bleaching, *Nature* (2018). [DOI: 10.1038/s41586-018-0359-9](https://doi.org/10.1038/s41586-018-0359-9)

Provided by University of Tasmania

Citation: NE Australian marine heatwave shakes up coral reef animal populations (2018, July 25)
retrieved 24 April 2024 from
<https://phys.org/news/2018-07-ne-australian-marine-heatwave-coral.html>

This document is subject to copyright. Apart from any fair dealing for the purpose of private study or research, no part may be reproduced without the written permission. The content is provided for information purposes only.