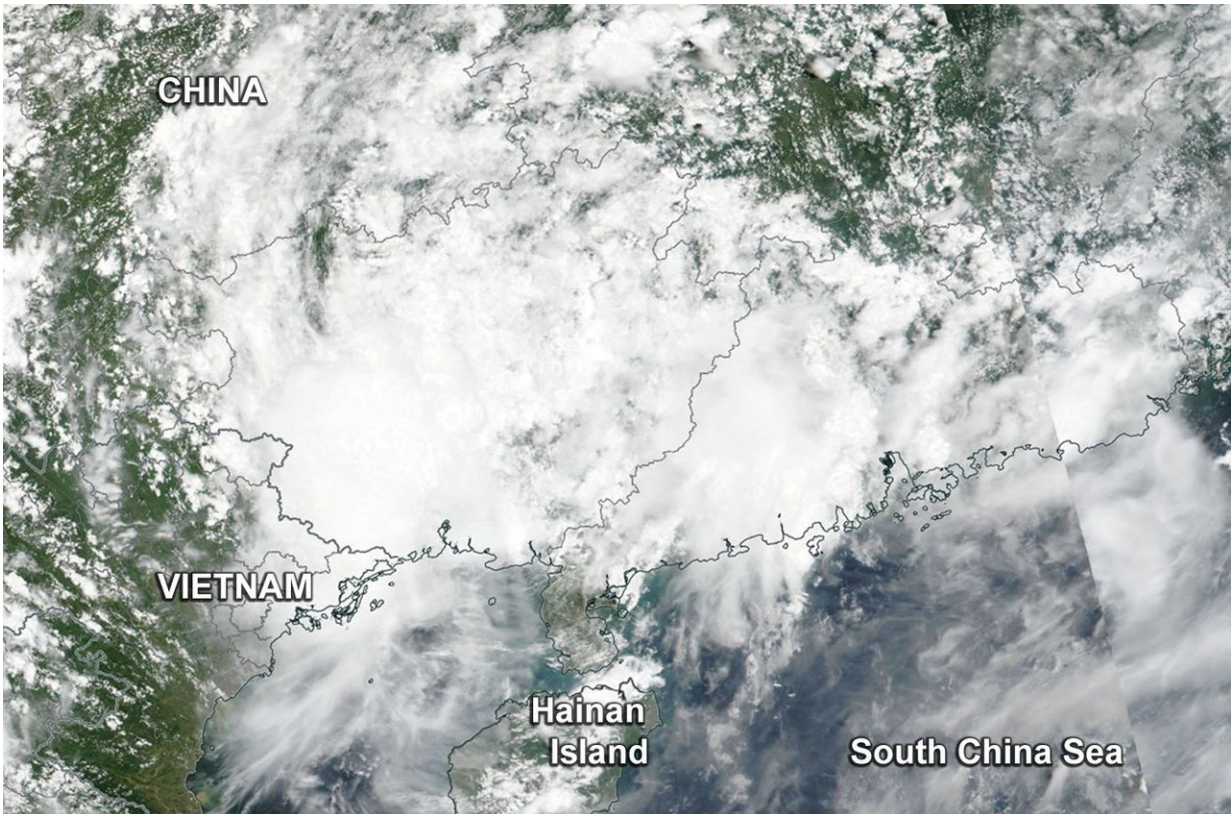


NASA satellite shows Son-Tinh's swan song

July 24 2018, by Rob Gutro



On July 24 the VIIRS instrument aboard NASA-NOAA's Suomi NPP satellite captured a visible image of Tropical Depression Son-Tinh inland over southern China. Credit: NOAA/NASA Goddard Rapid Response Team

NASA-NOAA's Suomi NPP satellite found Tropical Depression Son-Tinh over southern China early on July 24.

On July 24, the Visible Infrared Imaging Radiometer Suite (VIIRS) instrument aboard NASA-NOAA's Suomi NPP satellite captured visible image of Son-Tinh over the provinces of Guangxi and Guangdong, China, and northeastern Vietnam.

At 5 a.m. EDT (0900 UTC), the Joint Typhoon Warning Center noted in their final warning on the system, that Tropical depression Son-tinh was located near 21.9 degrees north latitude and 109.0 degrees east longitude, about 181 nautical miles east-northeast of Hanoi, Vietnam. Son-Tinh had maximum sustained winds near 25 knots (28.7 mph/46.3 kph). It was moving to the north-northwest at 6 knots (7 mph/11 kph).

The China Meteorological Administration (CMA) forecast on July 24 noted "the tropical [depression](#) within Guangdong has moved into Bobai County, Guangxi in this 8:00 a.m. (local time). It will move towards west by north at the speed of 15 kilometers per hour. Extreme rainstorm and scale 6-7 gale will hit Northern Hainan, southwestern Guangdong and western Guangxi." For additional forecasts from CMA, visit: <http://www.cma.gov.cn/en2014>.

Son-tinh was turning to the west, and will dissipate over mainland China in the next day or two.

Provided by NASA's Goddard Space Flight Center

Citation: NASA satellite shows Son-Tinh's swan song (2018, July 24) retrieved 8 May 2024 from <https://phys.org/news/2018-07-nasa-satellite-son-tinh-swan-song.html>

<p>This document is subject to copyright. Apart from any fair dealing for the purpose of private study or research, no part may be reproduced without the written permission. The content is provided for information purposes only.</p>
--