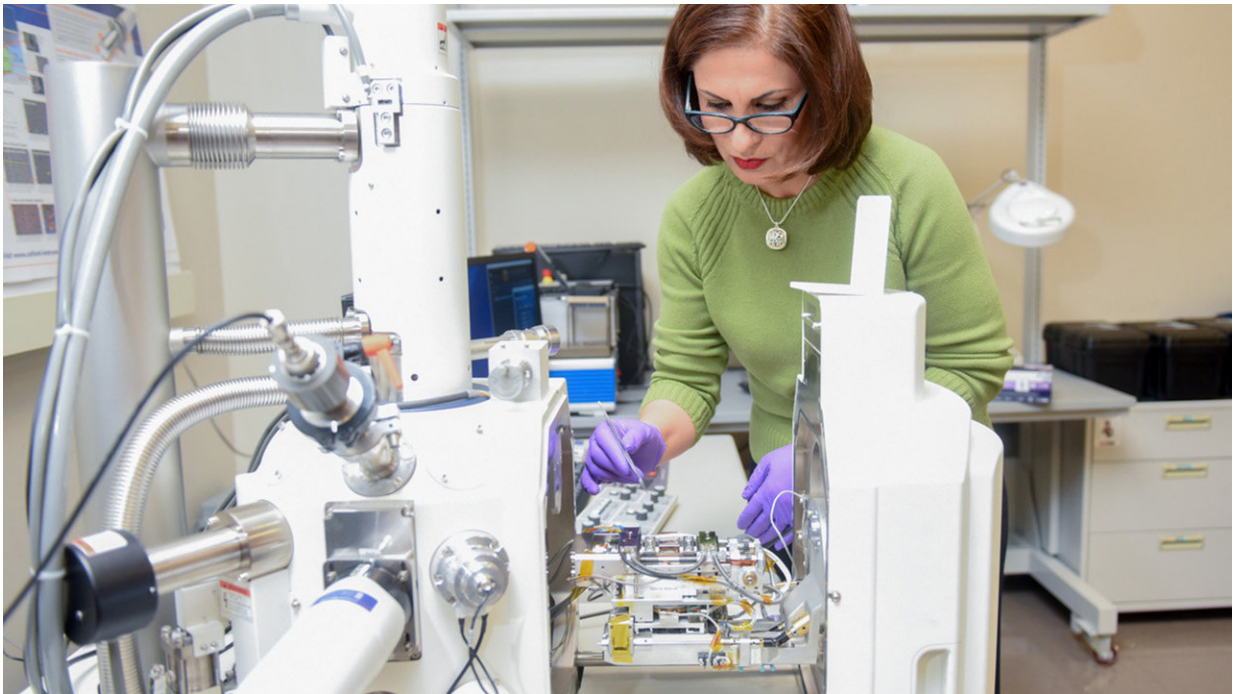


# New microscopy works at extreme heat, sheds light on alloys for nuclear reactors

July 9 2018, by Matt Shipman



Afsaneh Rabiei is pictured here with the device she developed that can capture scanning electron microscopy (SEM) images in real time at temperatures up to 1,000 degrees Celsius while applying stresses as high as two gigapascal. Credit: North Carolina State University

A new microscopy technique allows researchers to track microstructural changes in real time, even when a material is exposed to extreme heat and stress. Recently, researchers show that a stainless steel alloy called

alloy 709 has potential for elevated temperature applications such as nuclear reactor structures.

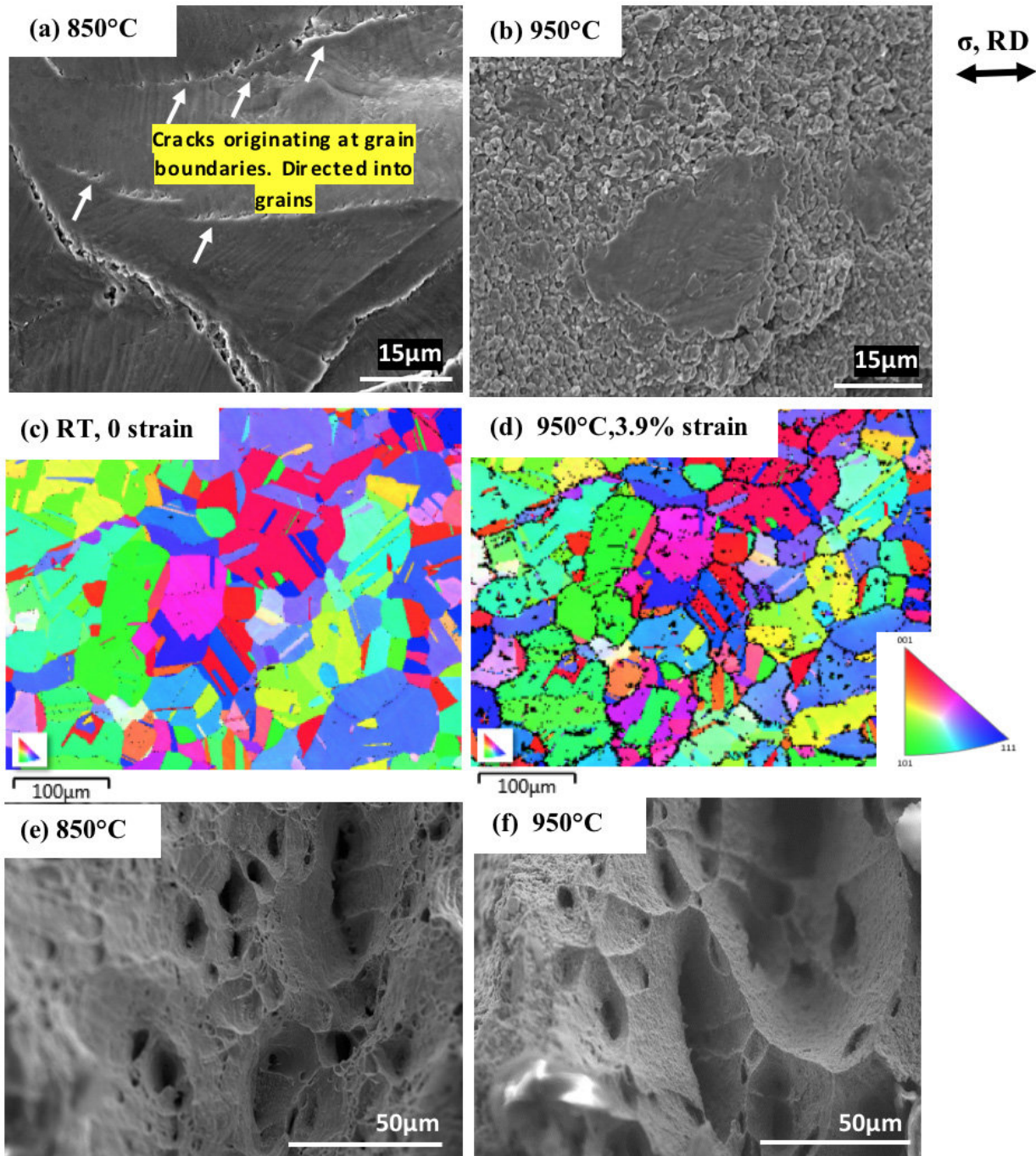
"Alloy 709 is exceptionally strong and resistant to damage when exposed to high temperatures for long periods of time," says Afsaneh Rabiei, corresponding author of a paper on the new findings and a professor of mechanical and aerospace engineering at North Carolina State University. "This makes it a promising material for use in next-generation nuclear power plants.

"However, alloy 709 is so new that its performance under high heat and load is yet to be fully understood. And the Department of Energy (DOE) needed to better understand its thermomechanical and structural characteristics in order to determine its viability for use in nuclear reactors."

To address DOE's questions, Rabiei came up with a novel solution. Working with three companies – Hitachi, Oxford Instruments and Kammrath & Weiss GmbH – Rabiei developed a new technique that allows her lab to perform scanning electron microscopy (SEM) in [real time](#) while applying extremely high heat and high loads to a material.

"This means we can see the crack growth, damage nucleation and microstructural changes in the material during thermomechanical testing, which are relevant to any host material – not only alloy 709," Rabiei says. "It can help us understand where and why [materials](#) fail under a wide variety of conditions: from room [temperature](#) up to 1,000 degrees Celsius (C), and with stresses ranging from zero to two gigapascal."

To place that in context, 1,000 C is 1,832 degrees Fahrenheit. And two gigapascal is equivalent to 290,075 pounds per square inch.



Images (a) and (b) are in-situ SEM images of sample under tensile testing at: (a) 850 °C showing cracks growing from grain boundary into the grains; and (b) 950 °C showing loss of crystallinity around the crack propagation. (c) & (d): Electron Back Scatter Diffraction (EBSD) Inverse Pole Figure (parallel to normal direction) of Alloy 709 sample at room temperature before tensile test and after tension up to 3.9% elongation at 950 °C. (e) & (f): SEM images from the

fracture surface of the sample after tension at 850 and 950 °C. Credit: North Carolina State University

Rabiei's team collaborated with the University of Birmingham in the United Kingdom to assess the mechanical and microstructural properties of alloy 709 when exposed to high heat and load.

The researchers exposed one-millimeter-thick samples of alloy 709 to temperatures as high as 950 C until the material "failed," meaning the material broke.

"Alloy 709 outperformed 316 stainless steel, which is what's currently used in nuclear reactors," Rabiei says. "The study shows that alloy 709's strength was higher than that of 316 stainless steel at all temperatures, meaning it could bear more stress before failing. For example, alloy 709 could handle as much stress at 950 C as 316 [stainless steel](#) could handle at 538 C.

"And our microscopy technique allowed us to monitor void nucleation and crack growth along with all changes in the microstructure of the material throughout the entire process," Rabiei says.

"This is a promising finding, but we still have more work to do," Rabiei says. "Our next step is to assess how alloy 709 will perform at [high temperatures](#) when exposed to cyclical loading, or repeated stress."

The paper, "A Study on Tensile Properties of Alloy 709 at Various Temperatures," appears in the journal *Materials Science and Engineering: A*.

**More information:** Swathi Upadhayay et al. A Study on Tensile



Properties of Alloy 709, at various temperatures, *Materials Science and Engineering: A* (2018). [DOI: 10.1016/j.msea.2018.06.089](https://doi.org/10.1016/j.msea.2018.06.089)

Provided by North Carolina State University

Citation: New microscopy works at extreme heat, sheds light on alloys for nuclear reactors (2018, July 9) retrieved 19 April 2024 from <https://phys.org/news/2018-07-microscopy-extreme-alloys-nuclear-reactors.html>

<p>This document is subject to copyright. Apart from any fair dealing for the purpose of private study or research, no part may be reproduced without the written permission. The content is provided for information purposes only.</p>
--