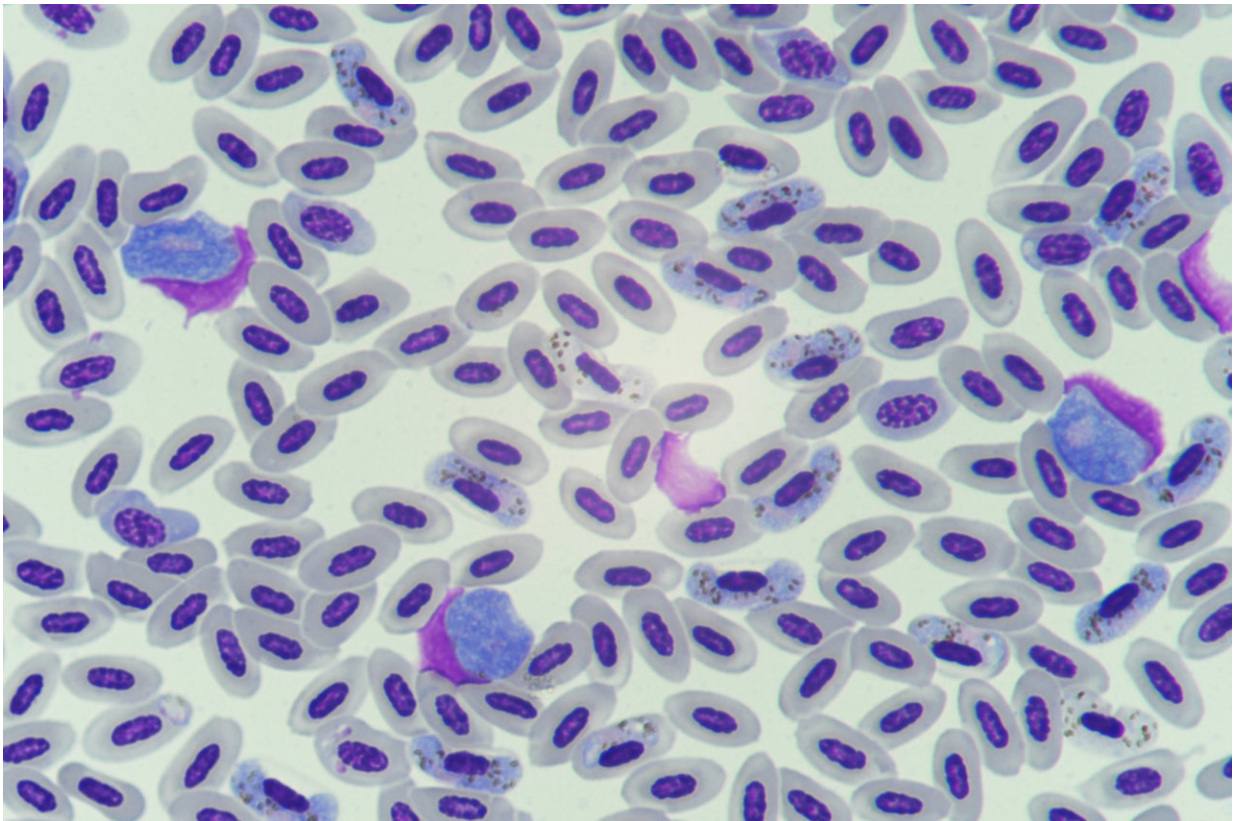


# Researchers build most comprehensive tree of life for malaria parasites

May 23 2018

---



In this microscopic image, two different genera of malaria parasite interact within a bird host. Credit: AMNH/S. Galen

A new study led by the American Museum of Natural History puts forth the most comprehensive tree of life for malaria parasites to date. Known

for being a devastating scourge of human health, with five species known to infect humans, there are more than 500 described species of malaria that infect mammals, birds, and reptiles. Among the researchers' findings, which were published today in the journal *Royal Society Open Science*, is that the diverse malaria parasite genus *Plasmodium* (which includes those species that infect humans) is composed of several distantly related evolutionary lineages, and, from a taxonomic standpoint, many species should be renamed.

"Many problems related to diseases that afflict humans involve the capacity of infectious organisms to evolve and adapt," said co-author Susan Perkins, a curator in the Museum's Division of Invertebrate Zoology and a principal investigator in the Museum's Sackler Institute for Comparative Genomics. "We won't be able to fully understand human-infecting malaria [parasites](#)—and possibly, develop unique ways to fight them—until we know more about their evolutionary history."

Mapping the relationships of malaria parasites is challenging on multiple levels. Many of these parasites are rare and difficult to sample, and tailored to infect specific [species](#), such as a single type of green-blooded skink in New Guinea or bats in remote forests of Africa. Malaria parasites also have peculiar DNA: while most organisms have a relatively even proportion of the four chemical bases (A, C, T, and G) that make up the genome, these parasites' DNA is heavily biased toward A (adenine) and T (thymine) couples, with as much as 80 percent of their genome consisting of just these two bases. However, this bias is not uniform across the diversity of these parasites and not accounting for these disparate ratios can result in skewed results. The researchers, led by Spencer Galen, a comparative biology Ph.D.-degree student in the Museum's Richard Gilder Graduate School, found a way to correct for this phenomenon. Working closely with Museum research fellow Janus Borner, who developed new genetic markers for the group while at the University of Hamburg, they were able to include malaria species from

deep evolutionary lineages—like those infecting deer, turtles, bats, and numerous species of birds—that were missing from previous analyses. The resulting tree, which sampled 58 malaria species from eight of the currently recognized genera and included DNA sequence data from more than 20 genes, is the most comprehensive of its kind.

The team's most surprising finding was that the genus *Plasmodium* consists of several groups that are not each other's closest relatives, and therefore, from a taxonomic standpoint, many species should be renamed. Importantly, this affects *Plasmodium falciparum*, the deadliest species of malaria for humans. Because it is in a separate group from the so-called "type species" that defines *Plasmodium*, *P. falciparum* should receive a new name—but it's not so simple.

"If we worked on a group of fishes or beetles, we would just split them up and put them into new genera," Perkins said. "But to do this based on our tree would involve changing the name of the most deadly protozoan parasite in the world, and there's too much inertia working against us. We have to be bad taxonomists in this case and let it continue to be called *Plasmodium*."

The researchers do recommend the scientists adopt a new parlance for this group. Instead of referring to *Plasmodium* broadly, they recommend that scientists should be more specific and use the subgeneric names. This is because the evolutionary tree shows that not all of these parasites are transmitted by mosquitos or replicate inside red blood cells—the two key defining characteristics of *Plasmodium*. Additionally, other parasites that defy this definition are intermingled with the human parasites and the model species used to study the disease in the lab, including those that infect mice.

The study also weighs in on a long-standing debate about how many times malaria parasites jumped into major vertebrate groups, in

particular mammals, via blood-feeding insect vectors.

"The specifics surrounding vertebrate colonization by malaria parasites have been pretty heavily debated," Galen said. "We found support for the idea that malaria parasites jumped to mammals just once."

The research confirms previous work tying the origin of malaria parasites to birds (likely including some dinosaurs). The parasites then made a jump to mammals followed by a secondary colonization of birds as well as reptiles. The study also supports work showing that bats were a major driver in the dramatic diversification of malaria parasite lineages. The authors suggest that there is much more work to be done, and possibly more name changes needed. In 2016, Perkins and others reported malaria parasites from white-tailed deer. The current study shows that these and others that infect hoofed mammals should get a new name. A malaria parasite isolated from a turkey vulture in California was also unlike anything else that has been found in birds and is likely a new genus, too.

"Malaria parasites are far more diverse than most people realize, and the picture we're painting shows yet another level of complexity," Galen said. "We really need a widespread assessment of [malaria](#) parasite taxonomy."

**More information:** Spencer C. Galen et al, The polyphyly of *Plasmodium* : comprehensive phylogenetic analyses of the malaria parasites (order Haemosporida) reveal widespread taxonomic conflict, *Royal Society Open Science* (2018). [DOI: 10.1098/rsos.171780](https://doi.org/10.1098/rsos.171780)

Provided by American Museum of Natural History

Citation: Researchers build most comprehensive tree of life for malaria parasites (2018, May 23)  
retrieved 19 April 2024 from

<https://phys.org/news/2018-05-comprehensive-tree-life-malaria-parasites.html>

This document is subject to copyright. Apart from any fair dealing for the purpose of private study or research, no part may be reproduced without the written permission. The content is provided for information purposes only.