

Museum realizes collection's rare elephant bird egg is real

April 25 2018



This photo provided by The Buffalo Museum of Science shows a rare elephant bird egg that curators recently realized is an actual egg from the extinct creature. The fully-intact egg, 12-inches tall, 28 inches in circumference, and weighing

more than 3 pounds, had previously been mislabeled as a model. Curators discovered the mistake while cataloguing pieces in the museum's collection. The museum will unveil the egg to the public May 1, 2018. (The Buffalo Museum of Science via AP)

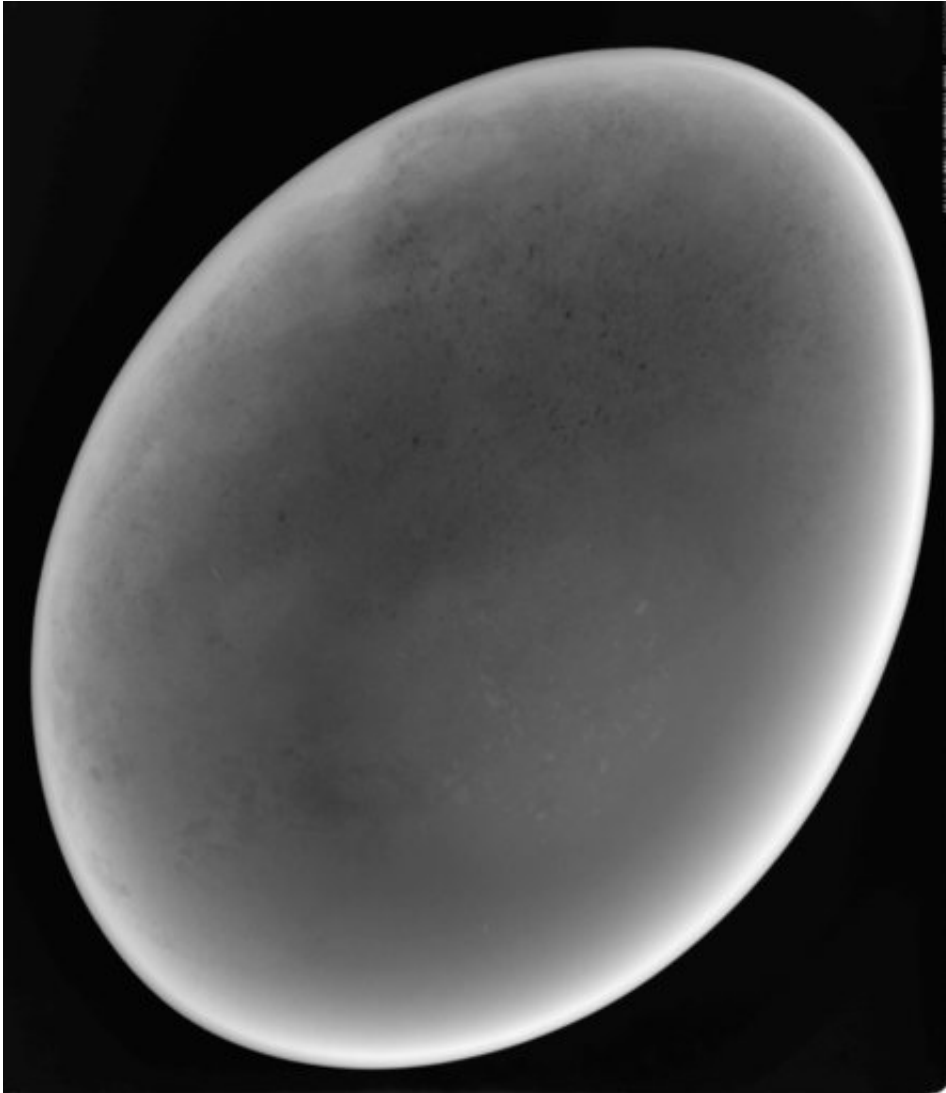
A Buffalo museum has made a rare discovery within its own collection: a fully intact egg from the extinct elephant bird that until now, was thought to be fake.

Curators at the Buffalo Museum of Science were cataloging pieces in the museum's collection when they realized and confirmed that the foot-tall egg had been mislabeled as a model. Measuring 28 inches (71 centimeters) around, it weighs more than 3 pounds (1.4 kilograms).

Experts say there are fewer than 40 intact elephant bird [eggs](#) held in [public institutions](#).

The flightless [elephant bird](#) was native to Madagascar. It grew to be 10 feet (3 meters) tall, weighed between 770 (349 kilograms) and 1,100 pounds (499 kilograms) and laid the largest eggs of any vertebrate, including dinosaurs.

The museum will unveil the egg to the public May 1.



This photo provided by The Buffalo Museum of Science shows a radiograph (X-Ray) of a rare elephant bird egg that curators recently realized is an actual egg from the extinct creature. The fully-intact egg, 12-inches tall, 28 inches in circumference, and weighing more than 3 pounds, had previously been mislabeled as a model. Curators discovered the mistake while cataloguing pieces in the museum's collection. The museum will unveil the egg to the public May 1, 2018. (The Buffalo Museum of Science via AP)

© 2018 The Associated Press. All rights reserved.

Citation: Museum realizes collection's rare elephant bird egg is real (2018, April 25) retrieved 17 April 2024 from <https://phys.org/news/2018-04-museum-rare-elephant-bird-egg.html>

This document is subject to copyright. Apart from any fair dealing for the purpose of private study or research, no part may be reproduced without the written permission. The content is provided for information purposes only.