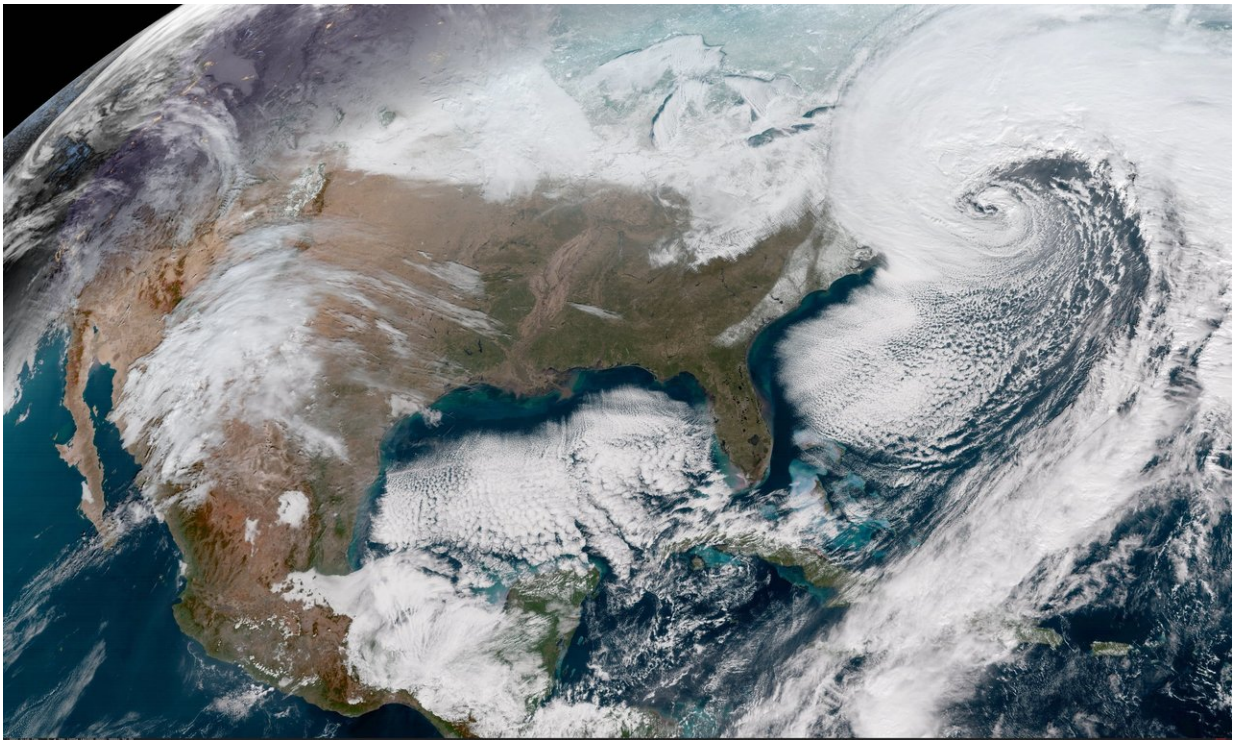


Image: NOAA's GOES-16 satellite captures powerful East Coast storm

January 5 2018



Credit: NOAA

This Geocolor image from the National Oceanic and Atmospheric Administration (NOAA) GOES-16 satellite captures the deepening storm off the East coast of the United States on Jan. 4, 2018, at 16:22 UTC. The powerful nor'easter is battering coastal areas with heavy snow and strong winds, from Florida to Maine. Notice the long line of clouds

stretching over a thousand miles south of the storm, which is drawing moisture all the way from deep in the Caribbean.

Geocolor is a multispectral product composed of True Color (using a simulated green component) during the daytime, and an Infrared product that uses bands 7 and 13 at night. During the day, the imagery looks approximately as it would appear when viewed with human eyes from space.

The Geostationary Operational Environmental Satellite (GOES) – R Series is a collaborative development and acquisition effort between NOAA and NASA. The GOES-16 (GOES-East) satellite, the first of the series, provides continuous imagery and atmospheric measurements of Earth's western hemisphere and space weather monitoring.

Provided by NASA

Citation: Image: NOAA's GOES-16 satellite captures powerful East Coast storm (2018, January 5) retrieved 3 September 2024 from <https://phys.org/news/2018-01-image-noaa-goes-satellite-captures.html>

This document is subject to copyright. Apart from any fair dealing for the purpose of private study or research, no part may be reproduced without the written permission. The content is provided for information purposes only.