

# Researcher discusses the self-assembly of materials to make diverse nanoscale patterns

January 10 2018

---



Materials scientist Gregory Doerk in the materials processing lab at CFN. Credit: Brookhaven National Laboratory

Some materials have the unique ability to self-assemble into organized molecular patterns and structures. Materials scientist Gregory Doerk of

the Electronic Nanomaterials Group at the Center for Functional Nanomaterials (CFN)—a U.S. Department of Energy (DOE) Office of Science User Facility at Brookhaven National Laboratory—takes advantage of this ability in materials called block copolymers. Using these self-assembling materials, which have chains of two or more distinct molecules linked together by chemical bonds, Doerk directs the formation of such patterns and structures at the nanoscale. The ultimate goal is to leverage these nanoscale architectures to control the properties of materials for applications including solar energy conversion and storage, catalysis, and optics.

## **Self-assembly has gained a lot of attention recently as a nanofabrication approach. How does it differ from the approach that has been traditionally used?**

Broadly speaking, there are two platforms for nanofabrication. One platform is top-down nanofabrication, which is the traditional approach used to make computer chips and other microelectronics. Light is used to create patterns that are then carved into silicon wafers. The patterning technique using light is called optical lithography. The other approach is bottom-up nanofabrication, or molecular self-assembly. The properties of the materials are encoded in their weak interactions, which drive certain materials to come together and form specific configurations—kind of like Lego bricks but the bricks all build up on their own to form some structure.

Lithography is generally faster—and more reliably produces the designed structures—but requires expensive, complex tools. Self-assembly is often slower and less predictive but it is inexpensive and can be easier. There are ways of combining the two approaches, and that combination is known as directed self-assembly. Self-assembling materials such as thin films of block copolymers are ordered using templates patterned by

standard lithography. Directed self-assembly enhances current manufacturing processes, expanding the spectrum of pattern geometries that are possible, and lowers the cost of nanofabrication.

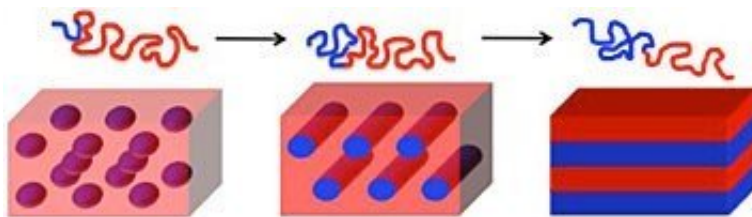
## **Your self-assembly research is focused on block copolymers. What makes these materials so special?**

Since the 1950s, people have been using triblock copolymers (three polymers joined together) in materials like synthetic rubber. Most polymers will not mix. Trying to mix polymers is kind of like trying to mix oil and water.

But in block copolymers, the polymer chains are chemically bound to each other. For example, diblock (two) copolymer chains are joined through a covalent bond. This bonding frustrates their drive to "demix." Instead, if block copolymers are given energy to mobilize their chains—for example by annealing (heating) the polymer film on a hot plate to above its glass transition temperature (when a polymer transitions from a hard, glassy material to a soft, rubbery one)—the chains will reconfigure and assemble into nanoscale phase-separated domains. These domains are ordered into nanoscale patterns based on inherent traits of the block copolymer. For example, let us say we have two polymers, A and B, joined together (diblock copolymer). The length of block A relative to the length of both blocks, the overall length of the polymer chains, and the properties of the polymers and the strength of their interaction (how much the polymers want to pull apart) govern the size and morphology, or shape, of the resulting structures. If the chains are too short or their repulsive interactions are too weak, the polymers will mix, causing the ordered state to become a disordered state and thus no pattern will form.

At CFN, a major part of our work is to transfer the patterns and

structures made through self-assembly, electron-beam lithography, or optical lithography at our Nanofabrication Facility into other materials to control material properties. A great example of this is CFN Director Chuck Black's work using block copolymers to create a self-assembled pattern that serves as a template for etching nanosized cones onto silicon surfaces. With these nanotextures, the silicon surfaces transformed from reflective mirrors to entirely black. That is one way we can use block copolymers.



The length of the polymer blocks (red and blue squiggly lines) and the strength of their interaction determine the shape of the resulting patterns in block copolymer self-assembly: (from left to right) spheres, cylinders, and lamellae (sheets). Credit: Gregory Doerk

But we want to expand the range of things we can do with self-assembly—and thus the range of applications. Diversifying the patterns possible with block copolymer self-assembly is a big part of my research.

## Have you been able to expand this range?

One way I am interested in expanding what we can do through self-assembly is by creating inorganic replicas of the self-assembled structures. We can accomplish this replication through a process called infiltration synthesis.

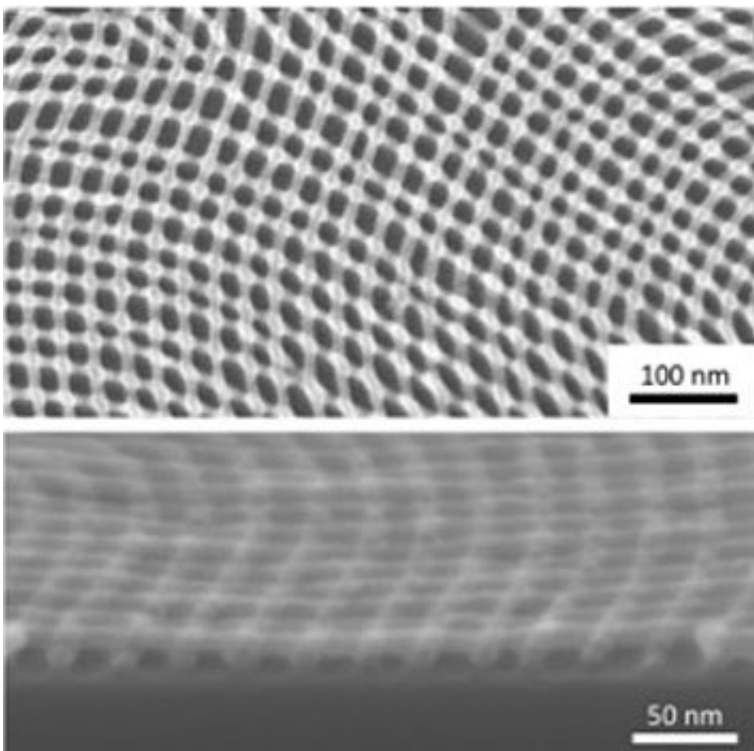
For example, say you have a block copolymer that forms lamellae (stripes) perpendicular to a substrate. Using an atomic-layer-deposition tool, it is possible to infiltrate those lamellae with a metal oxide and then remove the polymer, leaving behind metal oxide lines in a pattern determined by the polymer self-assembly. It is even possible to perform self-assembly and replica formation on top of previous replicas in an iterative way. What is really interesting is that the topography from the initial layer actually acts as a template dictating how polymer domains in the next layer line up. In the case of a second layer of lamellae perpendicular with the substrate, a self-assembled nanomesh is naturally created.

## **What other ways can you expand the range of self-assembled patterns?**

One area in which I have collaborated with other members of the Electronic Nanomaterials Group is to study the blending of block copolymers that form lamellae with block copolymers that form cylinders. The really cool thing we learned is that you can precisely control which of these two patterns emerge in different areas of a substrate through an approach we call selective directed self-assembly. In a diblock copolymer, one of the blocks may be relatively more hydrophobic (water repelling) and the other may be relatively more hydrophilic (water attracting). So if a chemical pattern was made up of alternating hydrophobic and hydrophilic lines, the [block copolymer molecules](#) would self-assemble accordingly. By changing the spacing and width of the chemical line gratings (patterns) on the substrate, we were able to direct the self-assembling blocks into specific arrangements—either forming striped patterns (lamellae) or hexagonal dot arrays (cylinders). We can locally adjust the spacing and linewidth of the underlying chemical template to precisely control exactly where these line or dot patterns form on the same substrate, too.

## How big are the features of these self-assembled nanoscale patterns?

Block copolymers typically self-assemble into ordered periodic structures with a tunable repeat spacing between around 25 to 50 nanometers. Actually, one of the projects I am currently working on is to increase the size range over which block copolymers form patterns. There is a lot of work in the scientific community to go to smaller and smaller sizes (approaching a few nanometers) for lithographic applications such as making computer chips. But for certain applications, you need larger sizes.



Plan view (top) and cross-sectional (bottom) scanning electron microscope images of an inorganic nanomesh created through iterative self-assembly and infiltration synthesis. Credit: Gregory Doerk

For example, the wavelength range of visible light is about 400 (purple) to 700 (red) nanometers. Even 400 nanometers is still about 10 times larger than the approximately 40-nanometer length scale possible with most block copolymers. As a result, light does not "see" the individual features of block copolymers.

However, patterns with features closer to 200 nanometers in size can influence light in new ways, and I am working to scale block copolymer assembly to these sizes. One exciting application is using this approach to make "structural colors." Colors are typically made using dyes or pigments. However, structural colors emerge from the way the light interacts with the nanomaterial—and so potentially one could make new types of lower-power displays through structural color.

Unfortunately, the process of forming patterns from block copolymers slows drastically, and even stops altogether, for these larger sizes. The development of self-assembled patterns is impeded by defective structures that form at the start of self-assembly. For these defects to "heal," the block polymer must reconfigure, which involves pulling one chain through the domain of the other polymer, overcoming a large energy barrier to do so. As the size of the polymers increases, the energy barrier goes up exponentially—so exponentially slower healing!

## **Have you come up with any solutions to overcome this challenge?**

My colleagues and I found that blending small-molecular-weight homopolymers (polymers made up of the same type of molecules) with the block copolymers makes it easier for the block copolymer chains to move around. Adding homopolymers promotes dramatic increases in the size of well-ordered pattern areas, or "grains." However, this addition alone does not let us form patterns with larger-size features from block

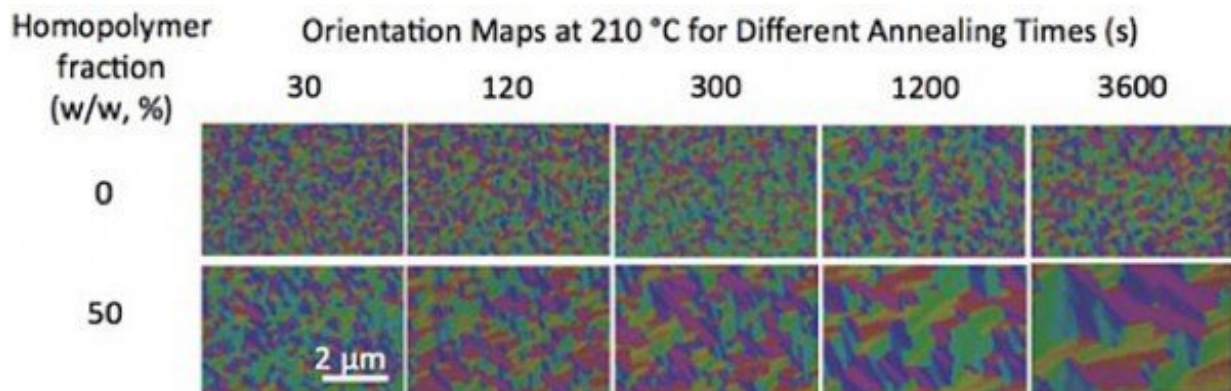
copolymers. We also need to anneal the materials in a solvent vapor. Solvent vapor annealing involves putting a volatile solvent in the region of the diblock copolymer, causing the polymer film to swell. As the polymer film swells, the solvent molecules intersperse between polymer chains. This process has a plasticizing effect, making it easier for the polymer to move. So both mixing the block copolymer with a homopolymer and swelling it with a solvent are needed to speed the formation of large-scale patterns.

After annealing, we image the resulting patterns with scanning electron microscopes at CFN. We also perform x-ray scattering experiments at the Complex Materials Scattering beamline at Brookhaven Lab's National Synchrotron Light Source II [also a DOE Office of Science User Facility] to get a measure of the periodicity during the annealing process so we can determine how quickly the material self-assembles into an ordered pattern.

## **How do all of the different self-assembled patterns you generate translate to possible applications?**

The work we do at CFN establishes the basis for producing new materials. For example, consider the mesh pattern I described. My colleague Chang-Yong Nam and I are working on making a mesh of zinc oxide nanowires through infiltration synthesis of block copolymers. Zinc oxide is a versatile semiconducting material, and these nanowires have a lot of surface area, making them attractive for a number of applications—including photoelectrochemical water splitting (a way of converting sunlight into fuel by splitting water into hydrogen and oxygen). These semiconducting nanowires are also very responsive to environmental cues like light or chemicals. Given their large area uniformity, the meshes could be easily integrated into widely deployable gas sensors.





Without blending, the size of grains (single-color regions) of a diblock copolymer with a molecular weight of 36 kilograms/mole barely changes with thermal annealing over time (top row). Blending the block copolymer with homopolymers increases the grain size and speeds up the ordering process (bottom row). Credit: Gregory Doerk

## How did you come to join CFN?

After graduate school, I completed a postdoctoral appointment working at IBM in California. It was there that I learned about block copolymers, using them to make patterns for microelectronics. I did that for three years, and then in 2013 I joined a research group at HGST, a subsidiary of Western Digital that sells hard disk and solid-state drives. At first, I worked on a project to create patterned nanoscale magnetic media onto which data is written to and read from, in order to enhance data density and stability.

Following that project, I moved into another area that was not very research oriented. At about this time, the current CFN Director, Chuck Black, gave a talk at HGST. Chuck's talk piqued my interest in CFN, and soon thereafter a position that very well fit my skills opened up. I

applied, and joined CFN in 2015.

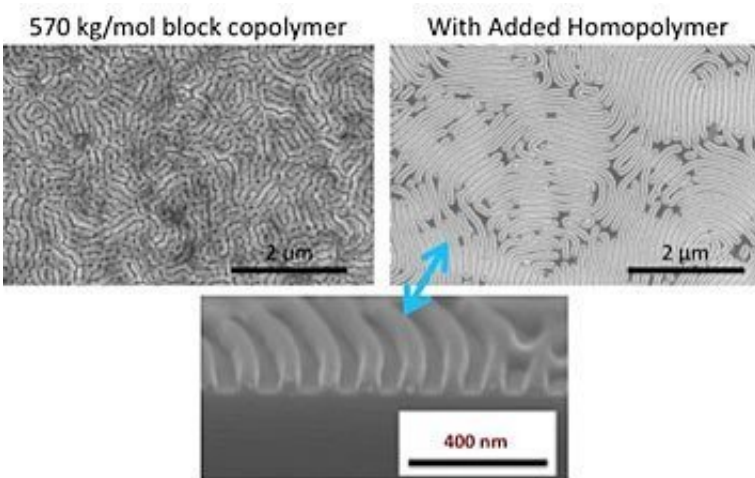
## **What was it like coming from industry to a national lab setting?**

It definitely takes some getting used to. There is a lot less pressure in some ways but more pressure in other ways. At CFN, you are expected to develop a lot more on your own as far as what direction you need to pursue on the basis of what is valuable to the lab. In industry, the goals of the project are clear, and there are deliverables to keep you on the narrow path to achieving those goals. This is not to say that I did not do exploratory research for a portion of my time in industry.

The other difference at CFN is that I am more involved with the academic and industrial community at large. I have to manage my time so that I can perform my own research and help users with their research. I find it really cool that researchers from all over the world come to CFN. The talent and expertise of the staff are what make the CFN so great. The staff know backwards and forwards what they are doing in the areas they specialize in, and they are dedicated to helping others.

## **What are some of the ways you have helped users?**

I regularly show users how to do [block copolymer](#) self-assembly and the etching process to transfer patterns into a substrate. Some users have employed these patterns as superhydrophobic textures to manipulate the flow of liquids in microfluidic devices, for example. In many cases, I help users develop a process when they need self-assembled patterns of varying sizes or shapes, to be applied to different substrates.



A comparison of scanning electron microscope images after solvent vapor annealing of a large block copolymer (top left) and the same copolymer with added homopolymer (top right) shows that the homopolymer can significantly improve pattern quality. The bottom image is a cross-sectional image of the top right sample. Credit: Gregory Doerk

I also help with the lithographic patterning of unusual materials. For example, one user I am working with is trying to [pattern](#) protein hydrogels, looking at how they mechanically respond to swelling and deswelling to understand how they might operate if injected into the body. Such protein hydrogels could have applications in biosensing, drug delivery, and wound healing.

Some users are interested in solvent vapor annealing, which is a very tricky process to control. So I am building a system with feedback control that can be set to maintain a solvent fraction of any given solvent. Otherwise, if the amount of solvent varies over time, the self-assembly might not work at all (too little solvent) or result in a disordered state (too much solvent).

## How did you become interested in research?

As an undergraduate at Case Western Reserve University, I majored in chemical engineering. One of my summer internships involved doing fuel cell work at a research lab. This internship led to another one at a fuel cell start-up, where I worked on sensors and solar cells. These internships gave me the opportunity to come up with ideas of my own and try different things. This exploration spurred me to pursue a doctoral degree at the University of California, Berkeley, where I continued my studies in chemical engineering.

I also think my undergraduate studies in philosophy, which I minored in, gave me a new understanding of the way science works. I really enjoyed reading about the philosophy of science, including books like Kuhn's *The Structure of Scientific Revolutions*. I learned how the views we often have are naïve or not accurate. There are lots of things people get wrong for a long time. But that does not mean they were not learning. Science is not perfect—but that is okay.

I was not the kid who grew up knowing he wanted to be a scientist. I liked philosophy and delving into critical thought. But I began to realize there is a lot of commonality between philosophy and science—in both fields, the aim is to gain knowledge about the world around us. But science is better because you can actually test things!

Provided by Brookhaven National Laboratory

Citation: Researcher discusses the self-assembly of materials to make diverse nanoscale patterns (2018, January 10) retrieved 27 April 2024 from <https://phys.org/news/2018-01-discusses-self-assembly-materials-diverse-nanoscale.html>

This document is subject to copyright. Apart from any fair dealing for the purpose of private study or research, no part may be reproduced without the written permission. The content is provided for information purposes only.