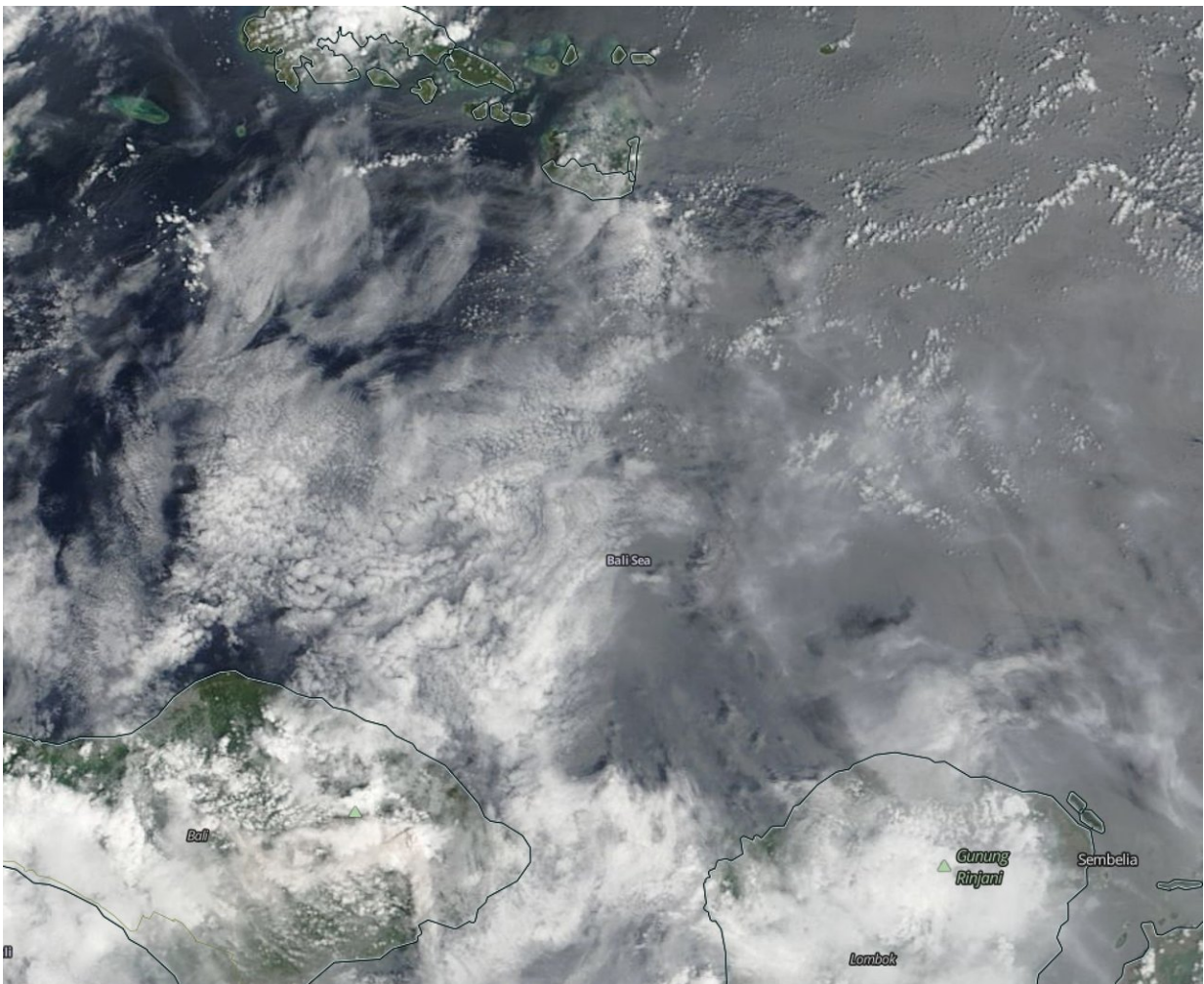


Image: NASA sees Mount Agung's ash cloud over the Bali Sea

November 30 2017, by Rob Gutro



Credit: Goddard Space Flight Center

Ash from Mount Agung on the Indonesian island of Bali was visible in imagery from NASA's Terra satellite.

The Moderate Resolution Imaging Spectroradiometer or MODIS instrument that flies aboard NASA's Terra satellite captured a [visible image](#) of the [ash cloud](#) on Nov. 29, 2017 at 0245 UTC (Nov. 28 at 9:45 p.m. EST). The MODIS image showed a grey cloud of ash blanketing part of the Bali Sea. The Bali Sea is north of the island of Bali and south of Indonesia's Kangean Island.

Indonesia's National Disaster Management Authority (BNPB) noted that the first eruption of Mount Agung occurred on Nov. 21 at 5:05 p.m. WITA local time. At that time the status of Gunung Agung was at standby Alert level 3. On Nov. 27, BNPB raised the Alert to the highest level, level 4. BNPB warned that the eruptions are increasing. The volcano continues to spew ash as high as 2 miles into the sky.

On Nov. 27, BNPB also issued an evacuation proclamation, "people within a radius of 8 km and 10 km (5 and 6 miles) of expansion are urged to immediately evacuate."

In 1963 Mount Agung's eruption killed more than 1,600 people on the island. For local updates from the BNPB: www.bnpb.go.id/

Provided by NASA

Citation: Image: NASA sees Mount Agung's ash cloud over the Bali Sea (2017, November 30) retrieved 10 July 2024 from <https://phys.org/news/2017-11-image-nasa-mount-agung-ash.html>

<p>This document is subject to copyright. Apart from any fair dealing for the purpose of private study or research, no part may be reproduced without the written permission. The content is provided for information purposes only.</p>
--