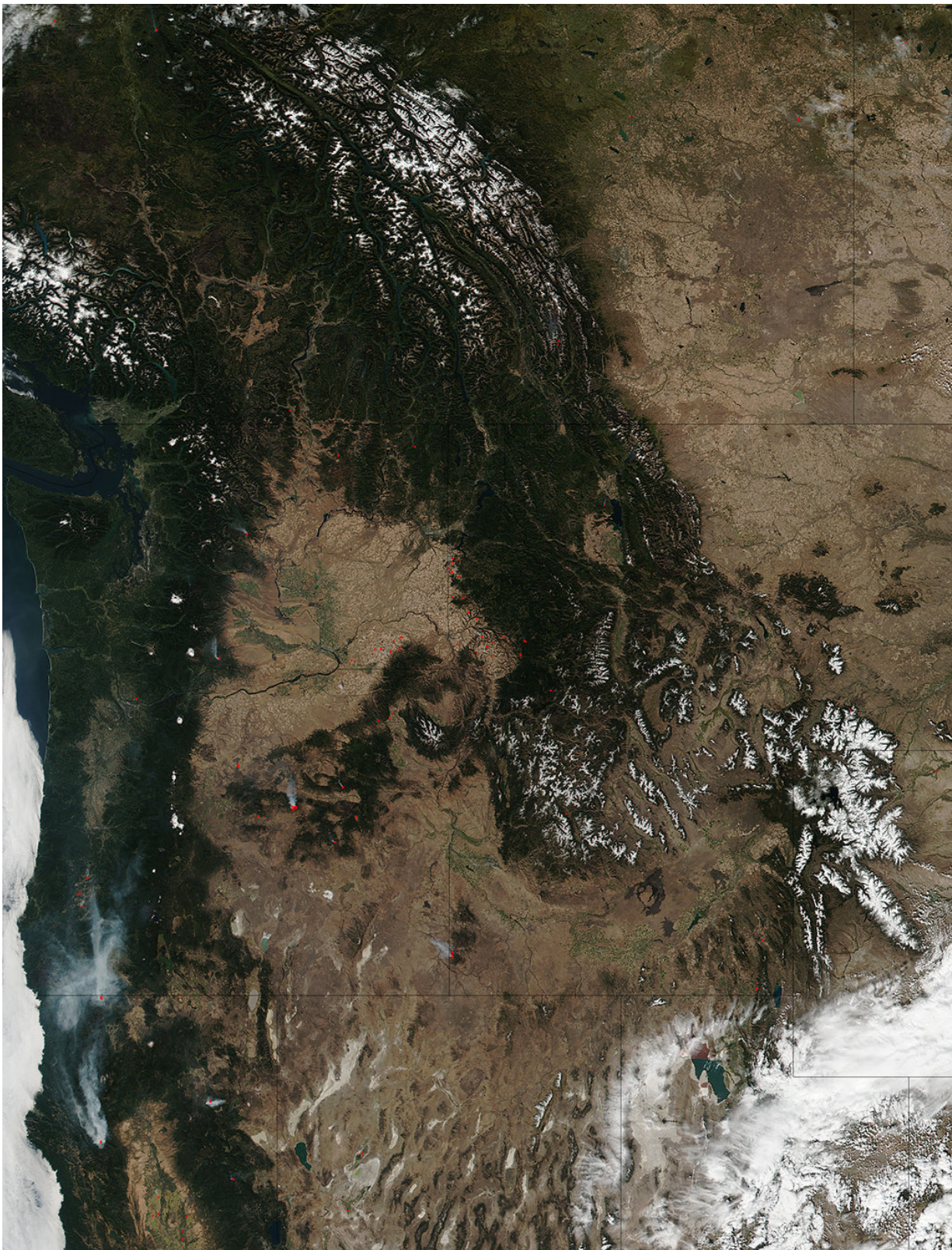


Fires and snow in the Pacific Northwest

October 2 2017, by Lynn Jenner



Credit: Jeff Schmaltz, MODIS Rapid Response Team

The Suomi NPP satellite's Visible Infrared Imaging Radiometer Suite (VIIRS) instrument captured a look at multiple fires and smoke burning in the Pacific Northwest on September 28, 2017. Accompanying the fires are patches of snow already falling in the northern area. Actively burning areas, detected by VIIRS, are outlined in red.

Hot, dry conditions in the summertime make wildfires likely to plague the Pacific Northwest and California. This year, however, record-dry conditions, record-breaking heat, and a spate of lightning storms have made for a very dangerous fire season. As the summer wanes and the fall takes hold, cooler temperatures and snowfall should help to dampen the wildfire outbreaks in the area.

The Suomi NPP satellite is a joint mission between NOAA and NASA.

Provided by NASA

Citation: Fires and snow in the Pacific Northwest (2017, October 2) retrieved 24 May 2024 from <https://phys.org/news/2017-10-pacific-northwest.html>

<p>This document is subject to copyright. Apart from any fair dealing for the purpose of private study or research, no part may be reproduced without the written permission. The content is provided for information purposes only.</p>
--