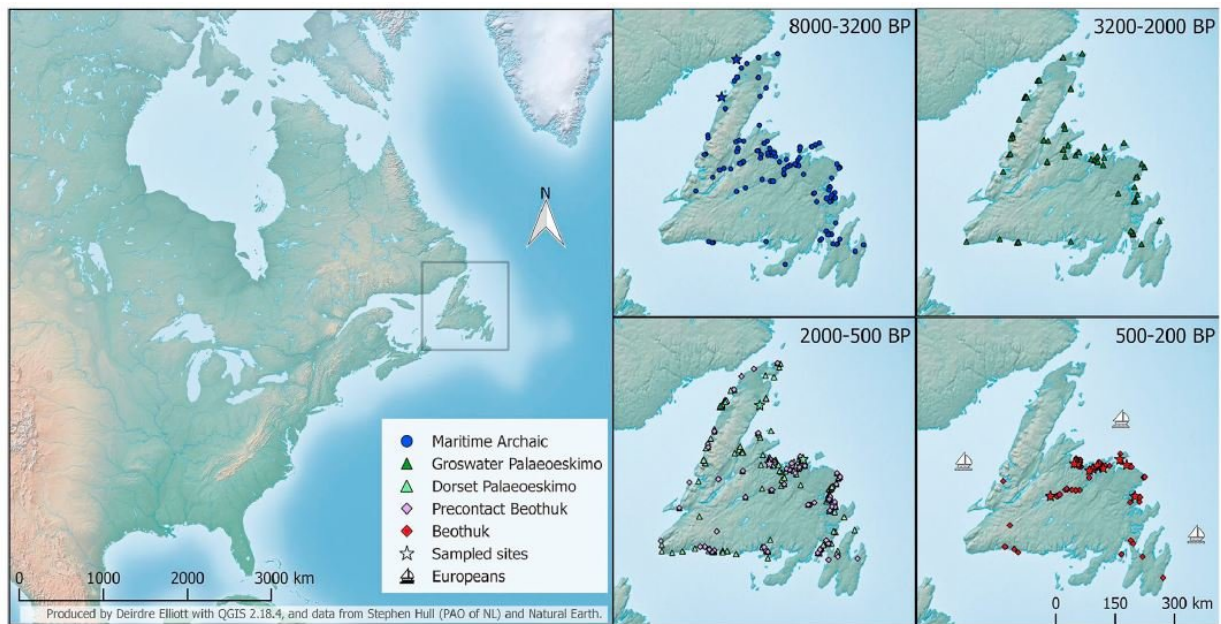


# Newfoundland populated multiple times by distinct groups, DNA evidence shows

October 12 2017



This schematic shows the settlement history of Newfoundland encompassing occupations by at least three distinct cultural groups: MA, Dorset Palaeoeskimo, and Beothuk. Credit: Deirdre Elliott with QGIS 2.18.44, and data from Stephen Hull and Natural Earth.

Indigenous people have been on the far northeastern edge of Canada for most of the last 10,000 years, moving in shortly after the ice retreated from the Last Glacial Maximum. Archaeological evidence suggests that people with distinct cultural traditions inhabited the region at least three

different times with a possible hiatus for a period between 2,000 and 3,000 years ago.

Now, researchers who've examined genetic evidence from mitochondrial DNA provide evidence that two of those groups, known as the Maritime Archaic and Beothuk, brought different matrilineal lines to the island, adding further support to the notion that those groups had distinct population histories. The findings are published in *Current Biology* on October 12.

"Our paper suggests, based purely on mitochondrial DNA, that the Maritime Archaic were not the direct ancestors of the Beothuk and that the two groups did not share a very recent common [ancestor](#)," says Ana Duggan of McMaster University. "This in turn implies that the island of Newfoundland was populated multiple times by distinct groups."

The relationship between the older Maritime Archaic population and Beothuk hadn't been clear from the archaeological record. With permission from the current-day indigenous community, Duggan and her colleagues, led by Hendrik Poinar, examined the mitochondrial genome diversity of 74 ancient remains from the island together with the [archaeological record](#) and dietary isotope profiles. All samples were collected from tiny amounts of bone or teeth.

The sample set included a Maritime Archaic subadult more than 7,700 years old found in the L'Anse Amour burial mound, the oldest known burial mound in North America and one of the first manifestations of the Maritime Archaic tradition. The majority of the Beothuk samples came from the Notre Dame Bay area, where the Beothuk retreated in response to European expansions. Most of those samples are from people that lived on the island within the last 300 years. The DNA [evidence](#) showed that the two groups didn't share a common maternal ancestor in the recent past, but rather one that coalesces sometime in the more distant past.

"These data clearly suggest that the Maritime Archaic people are not the direct maternal ancestors of the Beothuk and thus that the population history of the island involves multiple independent arrivals by indigenous peoples followed by habitation for many generations," the researchers write. "This shows the extremely rich [population](#) dynamics of early peoples on the furthest northeastern edge of the continent."

**More information:** *Current Biology*, Duggan et al.: "Genetic Discontinuity between the Maritime Archaic and Beothuk Populations in Newfoundland, Canada" [www.cell.com/current-biology/f...](http://www.cell.com/current-biology/full/S0960-9822(17)31091-6)  
[0960-9822\(17\)31091-6](http://www.cell.com/current-biology/full/S0960-9822(17)31091-6) , [DOI: 10.1016/j.cub.2017.08.053](https://doi.org/10.1016/j.cub.2017.08.053)

Provided by Cell Press

Citation: Newfoundland populated multiple times by distinct groups, DNA evidence shows (2017, October 12) retrieved 11 May 2024 from <https://phys.org/news/2017-10-newfoundland-populated-multiple-distinct-groups.html>

This document is subject to copyright. Apart from any fair dealing for the purpose of private study or research, no part may be reproduced without the written permission. The content is provided for information purposes only.