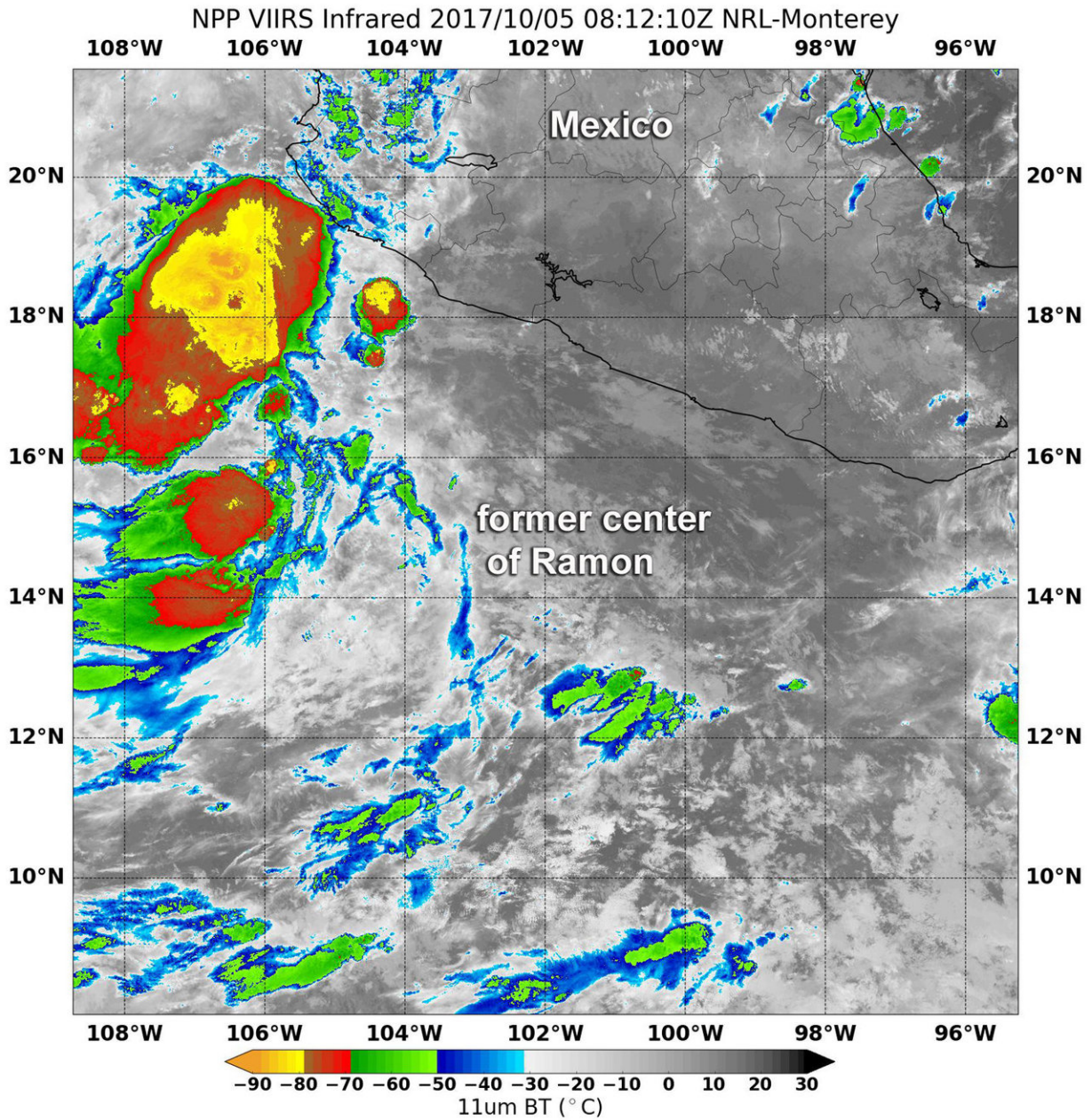


NASA sees Ramon degenerate to a trough

October 5 2017



Infrared imagery on Oct. 5 at 4:12 a.m. EDT (0812 UTC) from the VIIRS instrument aboard NASA-NOAA's Suomi NPP satellite showed some bursts of strong convection containing cloud top temperatures colder than -70 C/-94F (red) northwest of where Ramon's circulation center was located. Credit: NASA/NOAA/NRL

A trough is an elongated area of low pressure and that's exactly what former Tropical Storm Ramon has become in the eastern Pacific Ocean, along the southwestern coast of Mexico. NASA-NOAA's Suomi NPP satellite provided a look at the temperatures of Ramon's cloud tops and showed some strong thunderstorms remained in the stretched out remnants.

Infrared imagery on Oct. 5 at 4:12 a.m. EDT (0812 UTC) from the Visible Infrared Imaging Radiometer Suite (VIIRS) instrument aboard NASA-NOAA's Suomi NPP satellite showed bursts of strong convection northwest of what was Ramon's [center](#) of circulation and is now part of an elongated area [low pressure](#). Those thunderstorms had cloud top temperatures colder than minus degrees 70 Celsius (minus 94 degrees Fahrenheit).

At 5 a.m. EDT (0900 UTC) on Thursday, October 5, 2017 the National Hurricane Center (NHC) noted that "the shower activity near the center of circulation NHC was tracking has practically vanished. Since strong wind shear will prevail in this area, regeneration is not anticipated."

At that time, the remnants of Ramon were located near 15.0 degrees north latitude and 102.5 degrees west longitude. That's about 215 miles (350 km) southwest of Acapulco, Mexico. The remnants of Ramon were moving toward the west-northwest near 12 mph (19 kph). Maximum sustained winds were near 25 mph (35 kph) and weakening. The

estimated minimum central pressure was 1008 millibars.

The remnants are expected to dissipate later on Oct. 5.

Provided by NASA's Goddard Space Flight Center

Citation: NASA sees Ramon degenerate to a trough (2017, October 5) retrieved 23 April 2024 from <https://phys.org/news/2017-10-nasa-ramon-degenerate-trough.html>

This document is subject to copyright. Apart from any fair dealing for the purpose of private study or research, no part may be reproduced without the written permission. The content is provided for information purposes only.