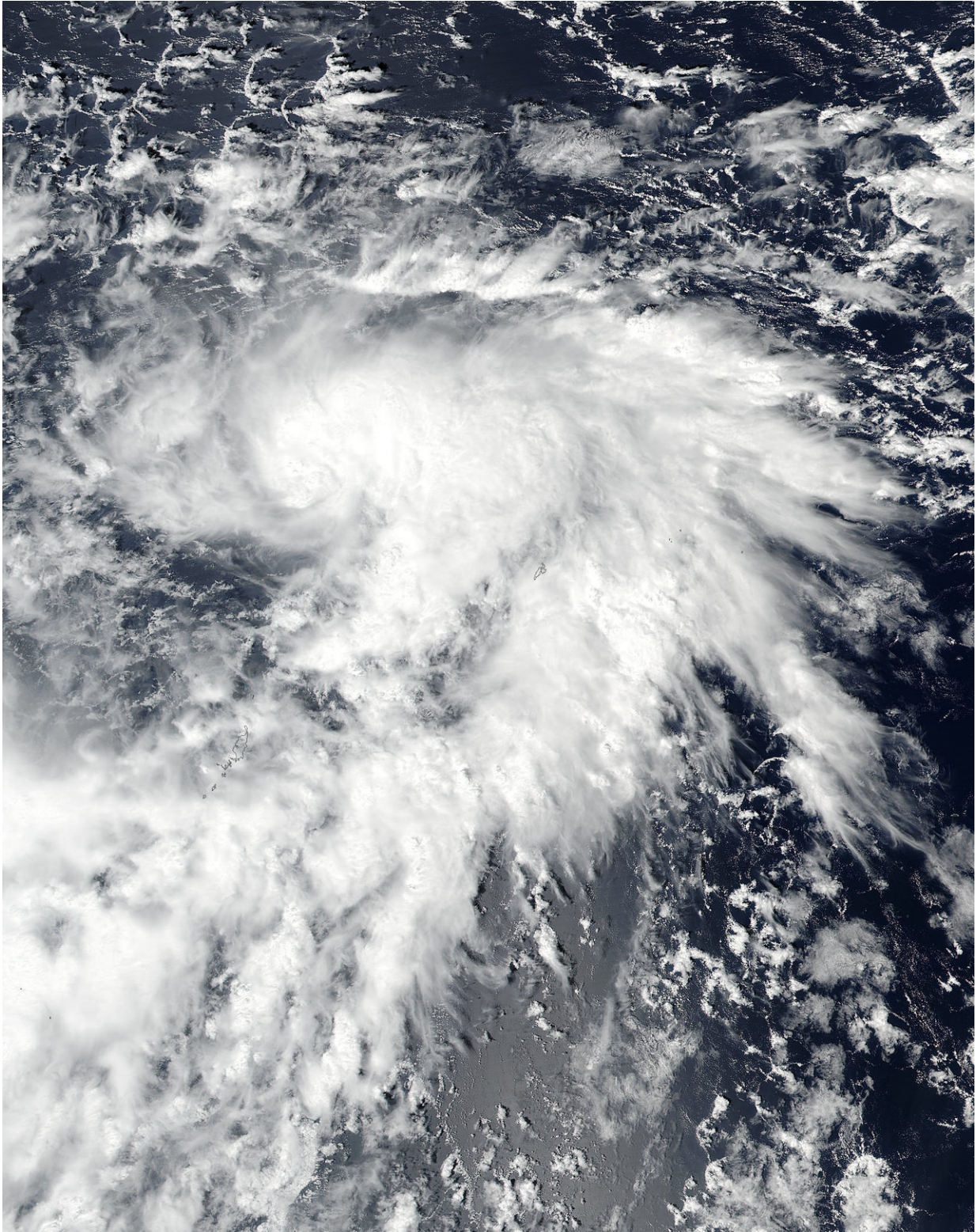


# **NASA finds newly formed tropical storm lan over open waters**

October 16 2017

---



On Oct. 16 at 12 a.m. EDT (0400 UTC) the NASA-NOAA's Suomi NPP provided a visible image of the storm. The image showed the bulk of clouds

were on the eastern side of the storm. Credit: NOAA/NASA Goddard Rapid Response Team

NASA-NOAA's Suomi NPP satellite provided a visible picture of newly formed Tropical Storm Lan in the Northwestern Pacific Ocean.

Tropical Storm Lan developed on Oct. 15 and has been moving to the west-northwest over open ocean.

On Oct. 16 at 12 a.m. EDT (0400 UTC) the VIIRS instrument aboard NASA-NOAA's Suomi NPP satellite provided a [visible image](#) of the storm. The image showed the bulk of clouds were on the eastern and southeastern sides of the storm indicating the storm was being affected by [vertical wind shear](#).

At 11 a.m. EDT (1500 UTC) Tropical storm Lan was centered near 10.8 degrees north latitude and 133.1 degrees east longitude, about 214 nautical miles north-northwest of Koror, Palau. It was moving to the west 12 knots (13.8 mph/22.2 kph) and had maximum sustained winds near 35 knots (40 mph/62 kph).

The Joint Typhoon Warning Center noted that Lan is intensifying and is expected to become a typhoon over the open waters of the western Pacific.

Provided by NASA's Goddard Space Flight Center

Citation: NASA finds newly formed tropical storm lan over open waters (2017, October 16) retrieved 27 April 2024 from <https://phys.org/news/2017-10-nasa-newly-tropical-storm-lan.html>

This document is subject to copyright. Apart from any fair dealing for the purpose of private study or research, no part may be reproduced without the written permission. The content is provided for information purposes only.