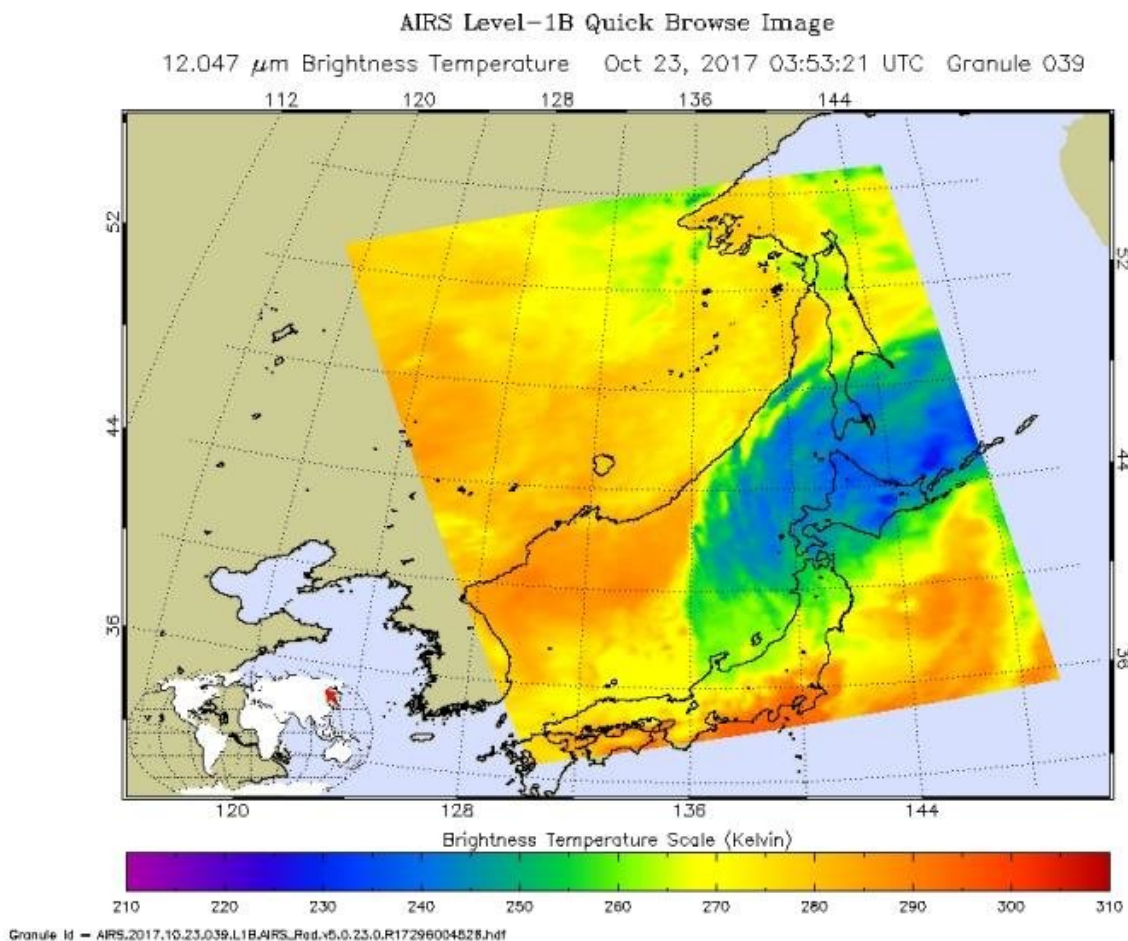


NASA follows extra-Tropical Cyclone Lan speeding through northern Japan

October 23 2017



The AIRS instrument aboard NASA's Aqua satellite captured an infrared image of Lan on Oct. 23 at 03:53 UTC (Oct. 22 at 11:53 p.m. EDT) showed coldest cloud tops and strongest storms (purple) were in eastern Hokkaido. Credit: NASA JPL/Ed Olsen

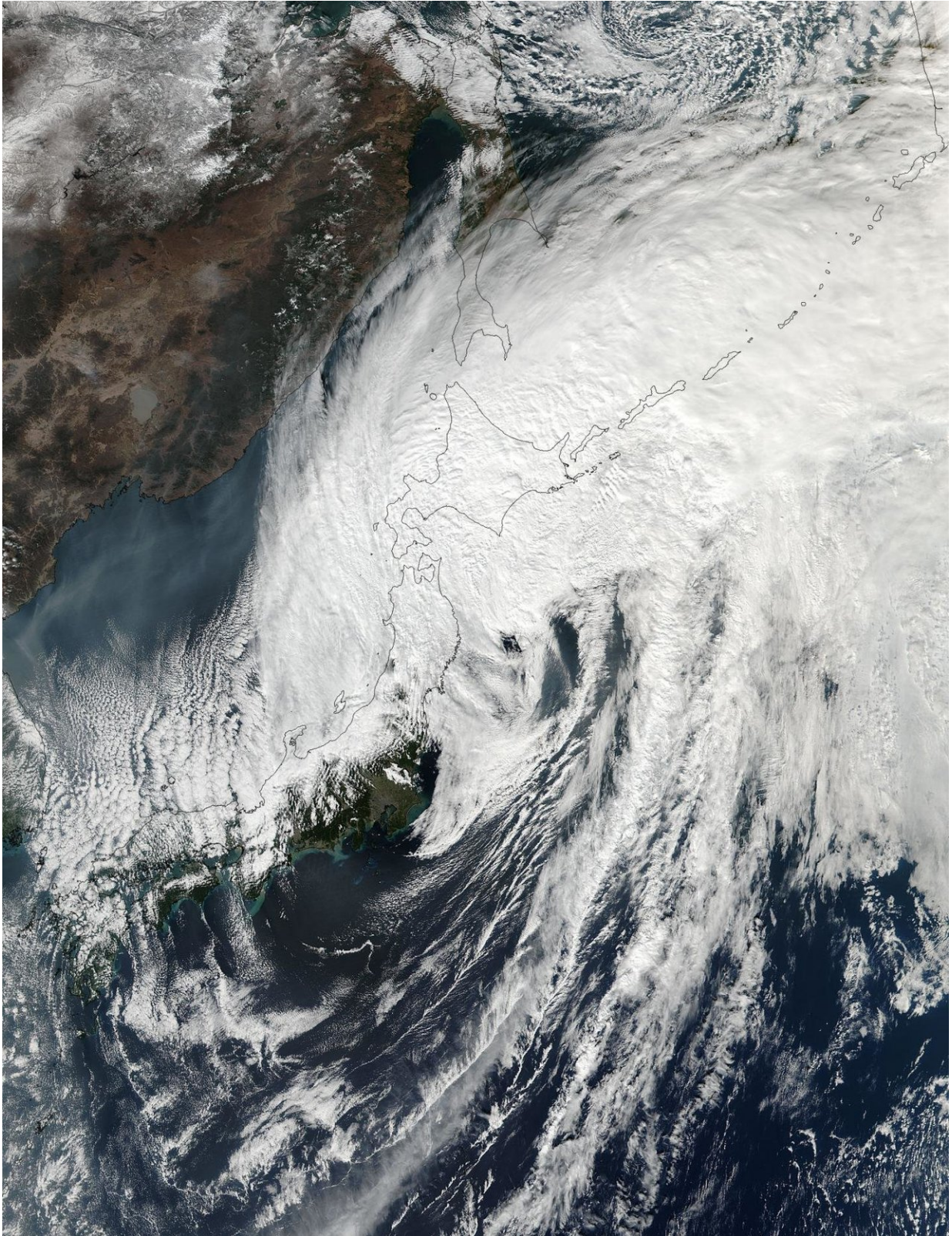
Now an extra-tropical cyclone over northern Japan, Lan was a typhoon when it made landfall just south of Tokyo over the weekend of Oct. 21 and 22. NASA's Aqua satellite and NASA-NOAA's Suomi NPP satellite provided imagery of the extra-tropical cyclone.

On Oct. 23 at 03:42 UTC (Oct. 22 at 11:42 p.m. EDT) NASA-NOAA's Suomi NPP satellite provided this visible image of Post-tropical cyclone Lan over Hokkaido, Japan. Hokkaido is the northernmost of Japan's main islands. The image showed the center near Hokkaido while clouds from the western side of the storm extended into the Sea of Japan.

The Atmospheric Infrared Sounder aboard NASA's Aqua satellite captured an infrared image of Lan on Oct. 23 at 03:53 UTC (Oct. 22 at 11:53 p.m. EDT). Infrared data provides cloud top temperatures and the coldest cloud tops and strongest storms were in eastern Hokkaido.

On Oct. 23 at 0300 UTC (Oct. 22 at 11 p.m. EDT) the Joint Typhoon Warning Center issued the final bulletin on Lan. At that time Lan had maximum sustained winds near 65 knots (74 mph) and was still typhoon strength as an extra-tropical [cyclone](#). Lan was centered near 28.6 degrees north latitude and 143.6 degrees east longitude. That's about 187 nautical miles south of Misawa, Japan. Lan was speeding to the northeast at 36 knots (41.4 mph/66.6 kph).

The Joint Typhoon Warning Center said "Animated multispectral [satellite](#) imagery depicts a well-defined frontal structure with an exposed, broad center and rapidly decaying deep convection sheared to the northeast. Lan is forecast to continue accelerating northeastward within the mid-latitude westerly flow but is forecast to maintain storm-force winds."



On Oct. 23 at 03:42 UTC (Oct. 22 at 11:42 p.m. EDT) NASA-NOAA's Suomi

NPP satellite provided this visible image of Post-tropical cyclone Lan over Hokkaido, Japan. Credit: NOAA/NASA Goddard Rapid Response Team

Provided by NASA's Goddard Space Flight Center

Citation: NASA follows extra-Tropical Cyclone Lan speeding through northern Japan (2017, October 23) retrieved 8 March 2024 from <https://phys.org/news/2017-10-nasa-extra-tropical-cyclone-lan-northern.html>

<p>This document is subject to copyright. Apart from any fair dealing for the purpose of private study or research, no part may be reproduced without the written permission. The content is provided for information purposes only.</p>
--