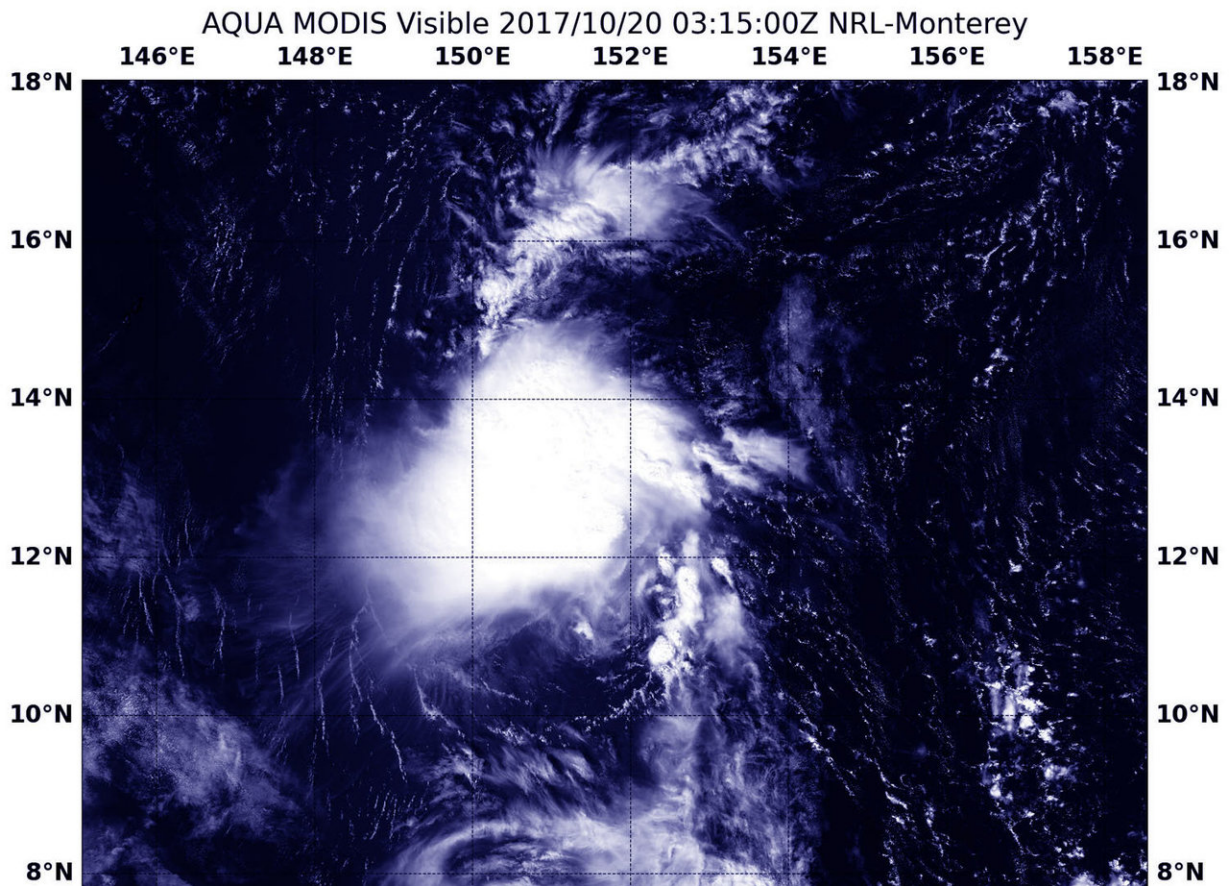


NASA sees a new depression form after another fizzled

October 20 2017



NASA's Aqua satellite captured a look at Tropical Depression 27W on Oct. 20 at 0315 UTC (Oct. 19 at 11:15 p.m. EDT) that showed it was still disorganized.
Credit: NASA/NRL

The Northwestern Pacific Ocean generated another tropical depression hours after a different system quickly faded. NASA's Aqua satellite provided a look at Tropical Depression 27W after it developed about 300 miles from Chuuk. Earlier in the day, Tropical Depression 26W dissipated in the South China Sea.

On Oct. 19 at 5 a.m. EDT (0900 UTC) Tropical Depression 26W was dissipating under adverse conditions to the west of Philippines. Twelve hours later, Tropical Depression 27W formed far west of the dying [depression](#). On Oct 19 at 5 p.m. EDT (2100 UTC), Tropical depression 27W (27W) formed about 282 nautical miles north of Chuuk.

NASA's Aqua satellite captured a look at Tropical Depression 27W on Oct. 20 at 0315 UTC (Oct. 19 at 11:15 p.m. EDT). The Moderate Resolution Imaging Spectroradiometer or MODIS instrument aboard Aqua provided a visible image of the storm that showed it was still disorganized. The Joint Typhoon Warning Center noted that infrared imagery showed weak flaring, fragmented, and disorganized convection that is obscuring an ill-defined low level circulation.

By Oct. 20 at 5 a.m. EDT (0900 UTC), 27W had strengthened to a tropical storm with [maximum sustained winds](#) near 35 knots (40 mph/62 kph). It was centered near 11.7 degrees north latitude and 151.7 degrees east longitude, about 403 nautical miles east-southeast of Saipan. 27W was moving to the northwest at 3 knots.

The Joint Typhoon Warning Center expects 27W will move northwest toward Guam over the next several days. 27W is not expected to strengthen much as it tracks to the northwest.

Provided by NASA's Goddard Space Flight Center

Citation: NASA sees a new depression form after another fizzled (2017, October 20) retrieved 26 April 2024 from <https://phys.org/news/2017-10-nasa-depression-fizzled.html>

This document is subject to copyright. Apart from any fair dealing for the purpose of private study or research, no part may be reproduced without the written permission. The content is provided for information purposes only.