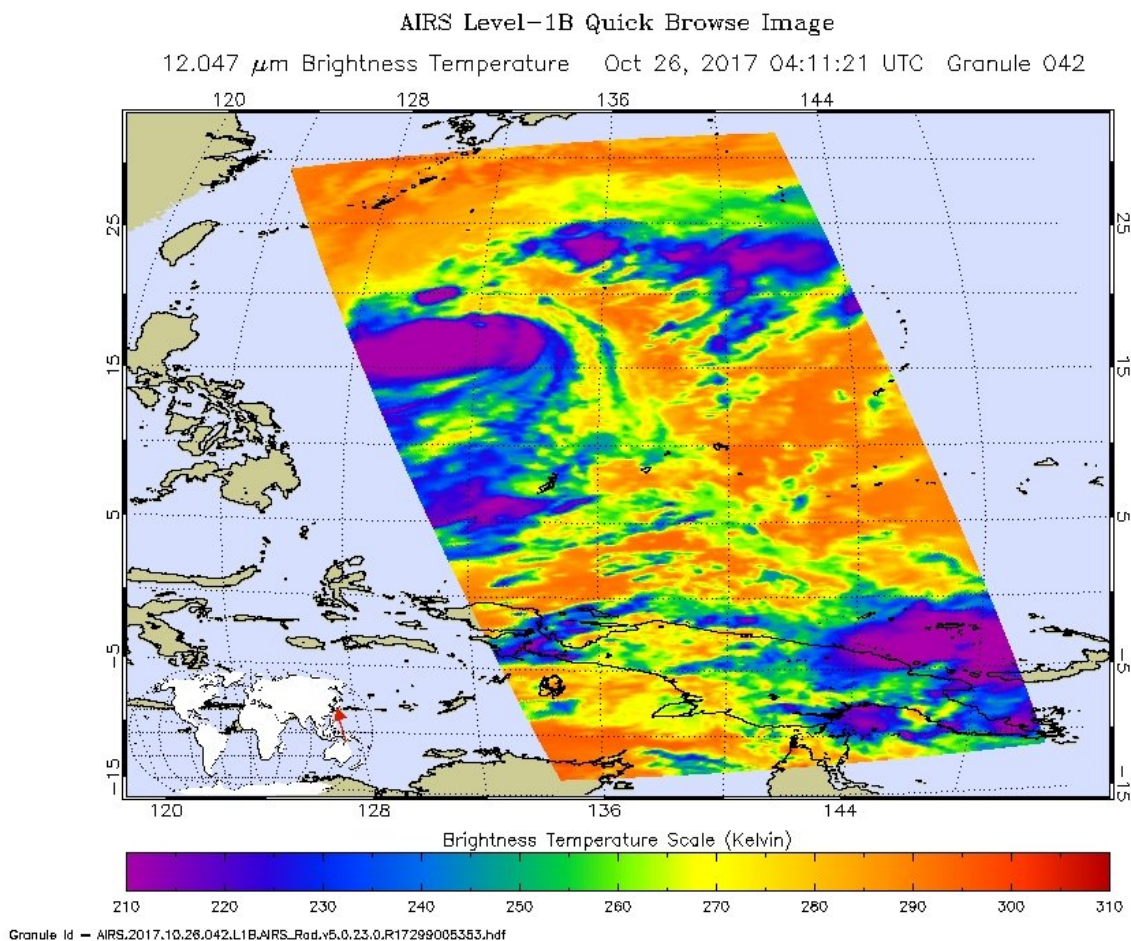


NASA finds winds shear still affecting Tropical Storm Saola

October 26 2017



On Oct. 26 at 12:11 a.m. EDT (0411 UTC), the AIRS instrument aboard NASA's Aqua satellite provided infrared data on Tropical Storm Saola. Coldest temperatures appear in purple indicating cloud tops as cold as minus 63 Fahrenheit (minus 53 Celsius). Credit: NASA JPL, Ed Olsen

NASA-NOAA's Suomi NPP satellite and NASA's Aqua satellite imagery showed wind shear was still affecting Tropical Storm Saola as it moved through the Philippine Sea.

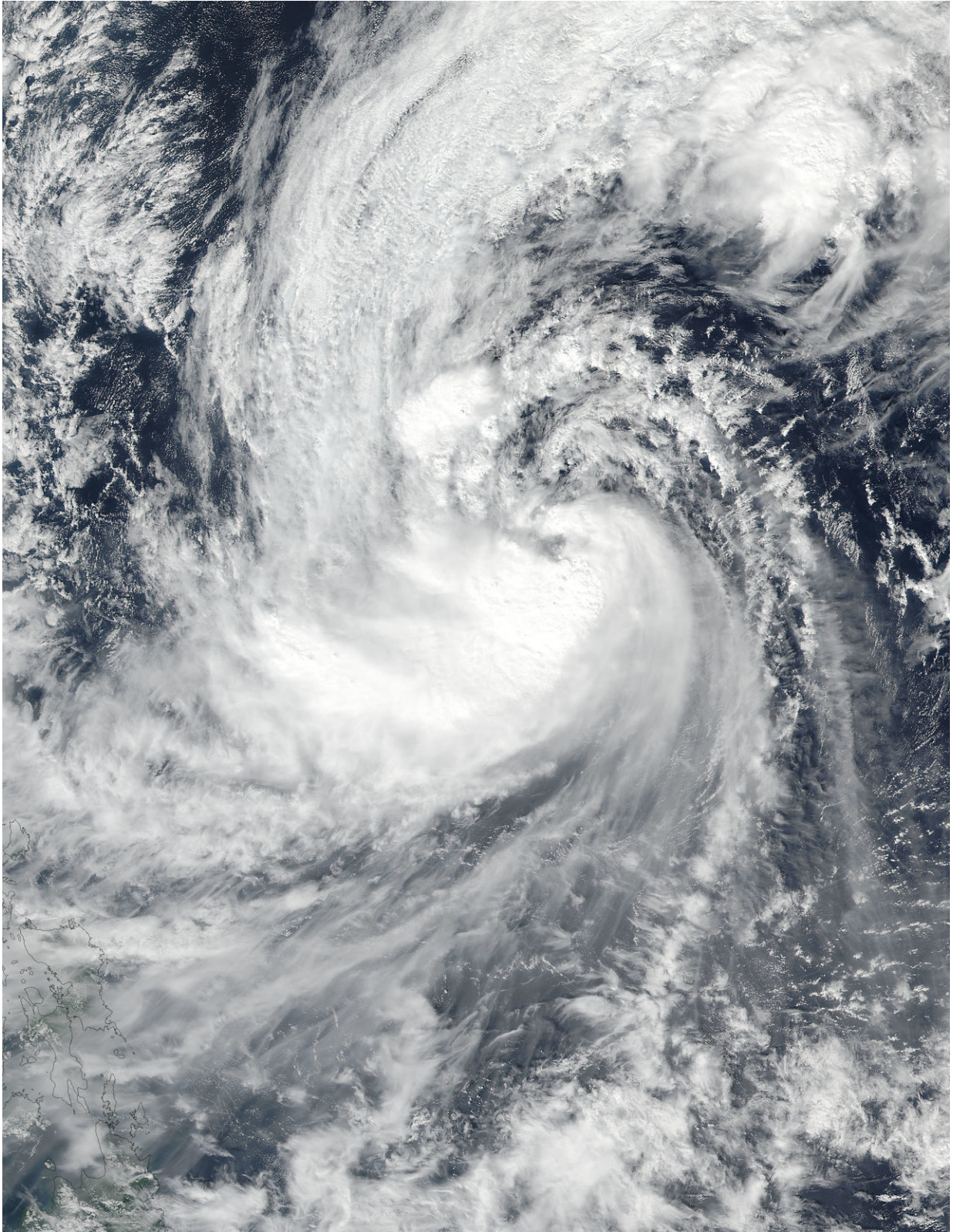
On Oct. 26 at 12:11 a.m. EDT (0411 UTC), the Atmospheric Infrared Sounder or AIRS instrument aboard NASA's Aqua satellite provided infrared data on Tropical Storm Saola. Coldest temperatures indicated cloud tops as cold as minus 63 Fahrenheit (minus 53 Celsius) were mostly south of the center.

On Oct. 26 at 12:18 a.m. EDT (04:18 UTC) the VIIRS instrument aboard NASA-NOAA's Suomi NPP satellite provided a visible image of the storm. The image showed the bulk of clouds were on the southern and western sides of the storm indicating the storm was still being affected by vertical [wind shear](#).

At 11 a.m. EDT (1500 UTC) Tropical Storm Saola was centered near 19.4 degrees north latitude and 131.2 degrees east longitude, about 466 nautical miles south-southeast of Kadena Air Base, Okinawa Island, Japan. For information about Kadena precautions, visit: <http://www.kadena.af.mil/>.

Saola was moving to the northwest 12 knots (13.8 mph/22.2 kph) and had maximum sustained winds near 45 knots (52 mph/83 kph).

The Joint Typhoon Warning Center noted that Saola is moving northwest and will slowly curve toward the northeast while strengthening into typhoon.



On Oct. 26 at 12:18 a.m. EDT (04:18 UTC) NASA-NOAA's Suomi NPP

provided a visible image of the Tropical Storm Saola in the Philippine Sea. The image showed the bulk of clouds were on the southern side of the storm. Credit: NOAA/NASA Goddard Rapid Response Team

Provided by NASA's Goddard Space Flight Center

Citation: NASA finds winds shear still affecting Tropical Storm Saola (2017, October 26)
retrieved 26 April 2024 from

<https://phys.org/news/2017-10-nasa-affecting-tropical-storm-saola.html>

<p>This document is subject to copyright. Apart from any fair dealing for the purpose of private study or research, no part may be reproduced without the written permission. The content is provided for information purposes only.</p>
--