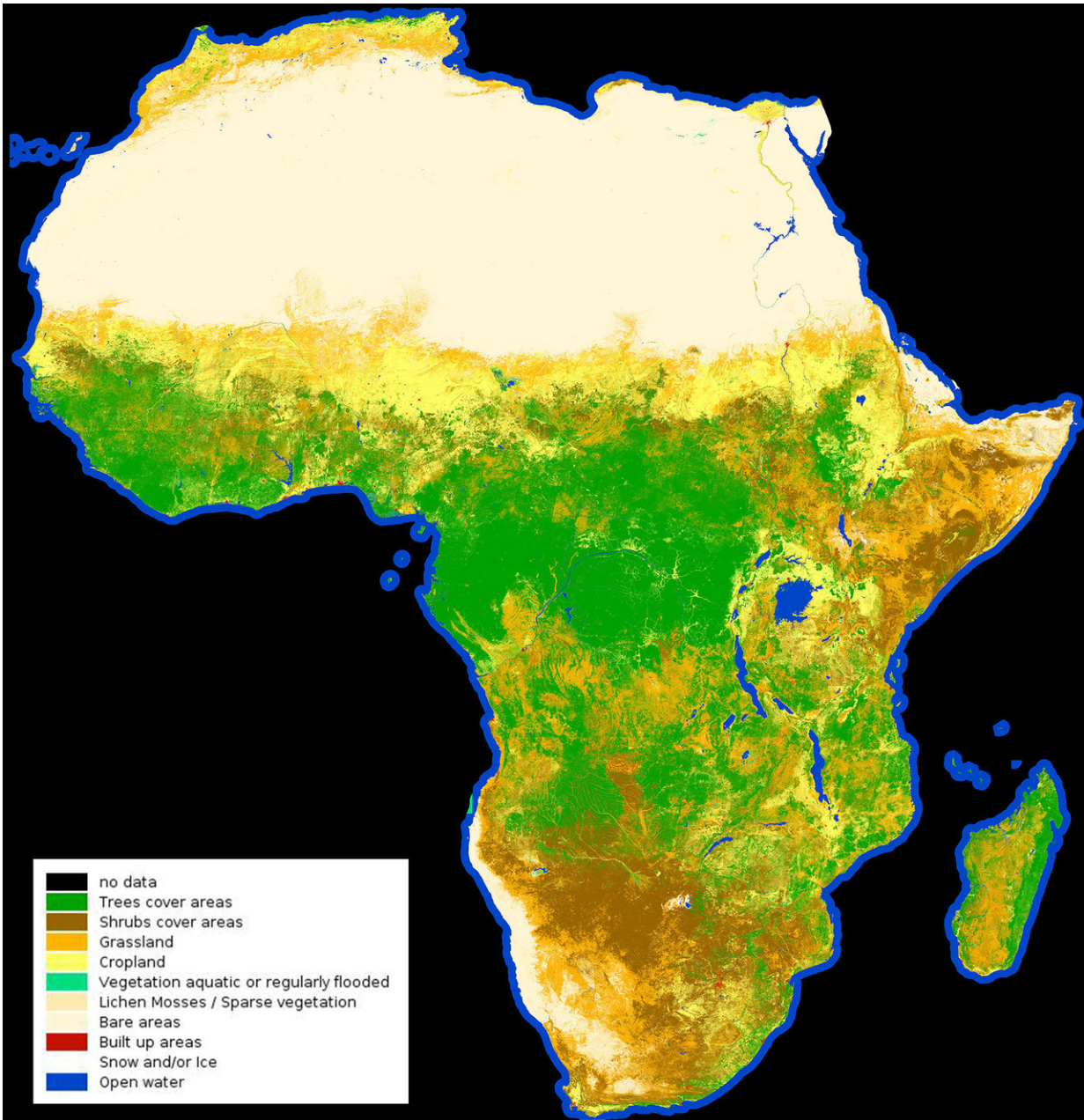


# Image: African land cover

October 4 2017

---



Credit: contains modified Copernicus Sentinel data (2015-2016), processed by Land Cover CCI, ESA

At 20 m resolution, this land cover classification map of Africa was created using 180 000 Copernicus Sentinel-2A images captured between December 2015 and December 2016.

Land-cover mapping breaks down the different types of material on Earth's surface.

This information is important for understanding changes in land use, modelling climate change extent and impacts, conserving [biodiversity](#) and managing natural resources.

Provided by European Space Agency

Citation: Image: African land cover (2017, October 4) retrieved 29 June 2024 from <https://phys.org/news/2017-10-image-african.html>

This document is subject to copyright. Apart from any fair dealing for the purpose of private study or research, no part may be reproduced without the written permission. The content is provided for information purposes only.