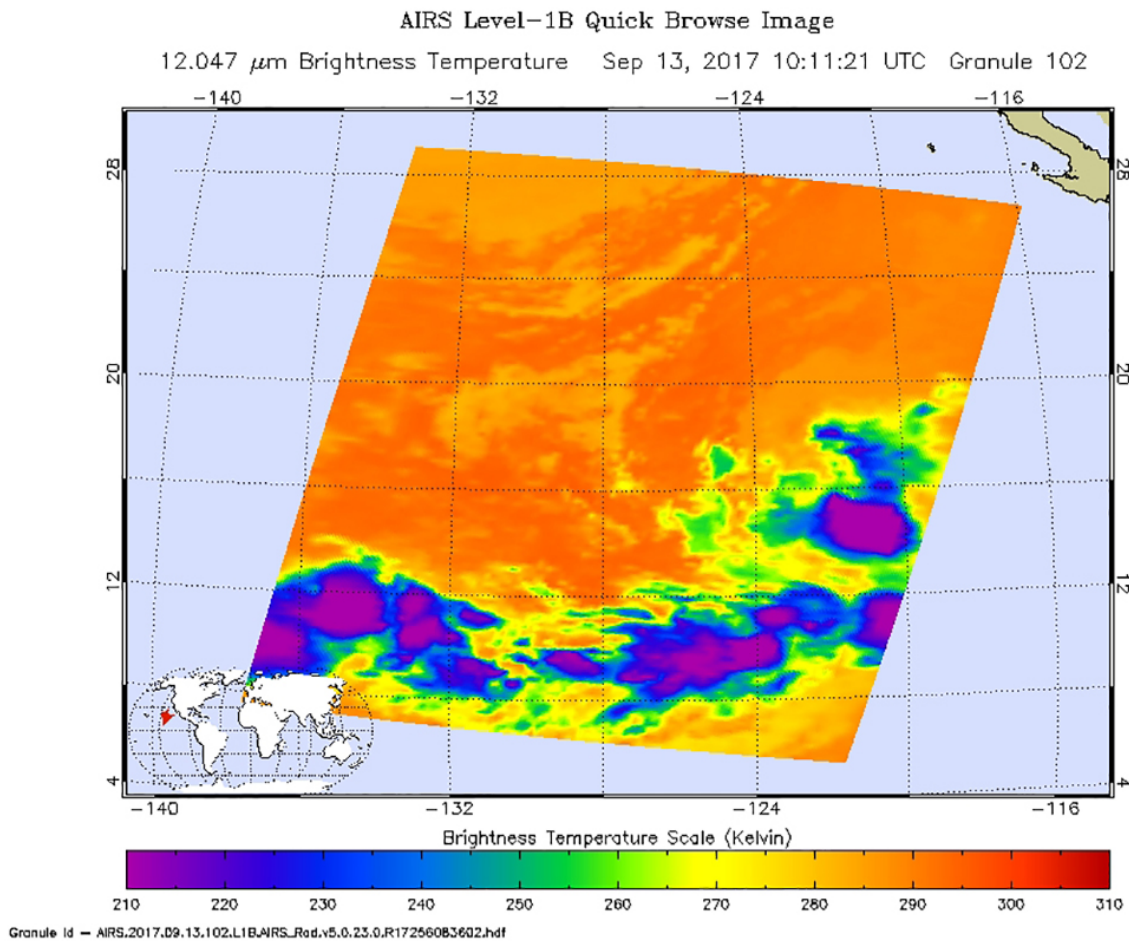


Tropical Depression 15E appears almost shapeless on NASA satellite imagery

September 13 2017



The AIRS instrument aboard NASA's Aqua satellite captured this image of Tropical Depression 15E on Sept. 13 at 6:11 a.m. EDT (1011 UTC), and purple indicates the strongest storms. Credit: NASA JPL, Ed Olsen

Tropical Depression 15E is being affected by vertical wind shear on NASA satellite imagery and appears almost shapeless.

The AIRS instrument aboard NASA's Aqua satellite captured infrared temperature data on Tropical Depression 15E's clouds on Sept. 13 at 6:11 a.m. EDT (1011 UTC). At the time, the storm appeared to have some strong thunderstorms in two areas around the center. The National Hurricane Center noted that "The cloud pattern has not become any better organized since yesterday and consists of a low-level center in between two shapeless blobs of deep convection."

At 11 a.m. EDT (8 a.m. PDT/1500 UTC) on Sept. 13, the center of Tropical Depression Fifteen-E was located near 14.9 degrees north latitude and 120.6 degrees west longitude, about 890 miles (1,435 km) southwest of the southern tip of Baja California.

West. The [depression](#) is moving toward the west near 9 mph (15 kph) and the National Hurricane Center said this general motion is expected to continue during the next couple of days. The estimated minimum central pressure is 1005 millibars.

Maximum sustained winds remain near 35 mph (55 kph) with higher gusts. No significant change in strength is expected today, but the depression could become a tropical storm in day or two.

The [vertical wind shear](#) that 15E is currently being affected by is forecast to decrease in a couple of days and the ocean is warm. The NHC said "On this basis, little change is anticipated during the next 24 to 36 hours, and some slight strengthening is forecast thereafter. The depression still has the opportunity to become a [tropical storm](#)."

There are three other areas in the Eastern Pacific that have a chance to develop. One lies to the west of 15E, and the other two systems are east

of the depression.

For updates on Tropical Depression 15E, visit: <http://www.nhc.noaa.gov>.

Provided by NASA's Goddard Space Flight Center

Citation: Tropical Depression 15E appears almost shapeless on NASA satellite imagery (2017, September 13) retrieved 27 April 2024 from <https://phys.org/news/2017-09-tropical-depression-15e-shapeless-nasa.html>

This document is subject to copyright. Apart from any fair dealing for the purpose of private study or research, no part may be reproduced without the written permission. The content is provided for information purposes only.