

Crash scene investigation reveals resting place of SMART-1 impact

September 25 2017



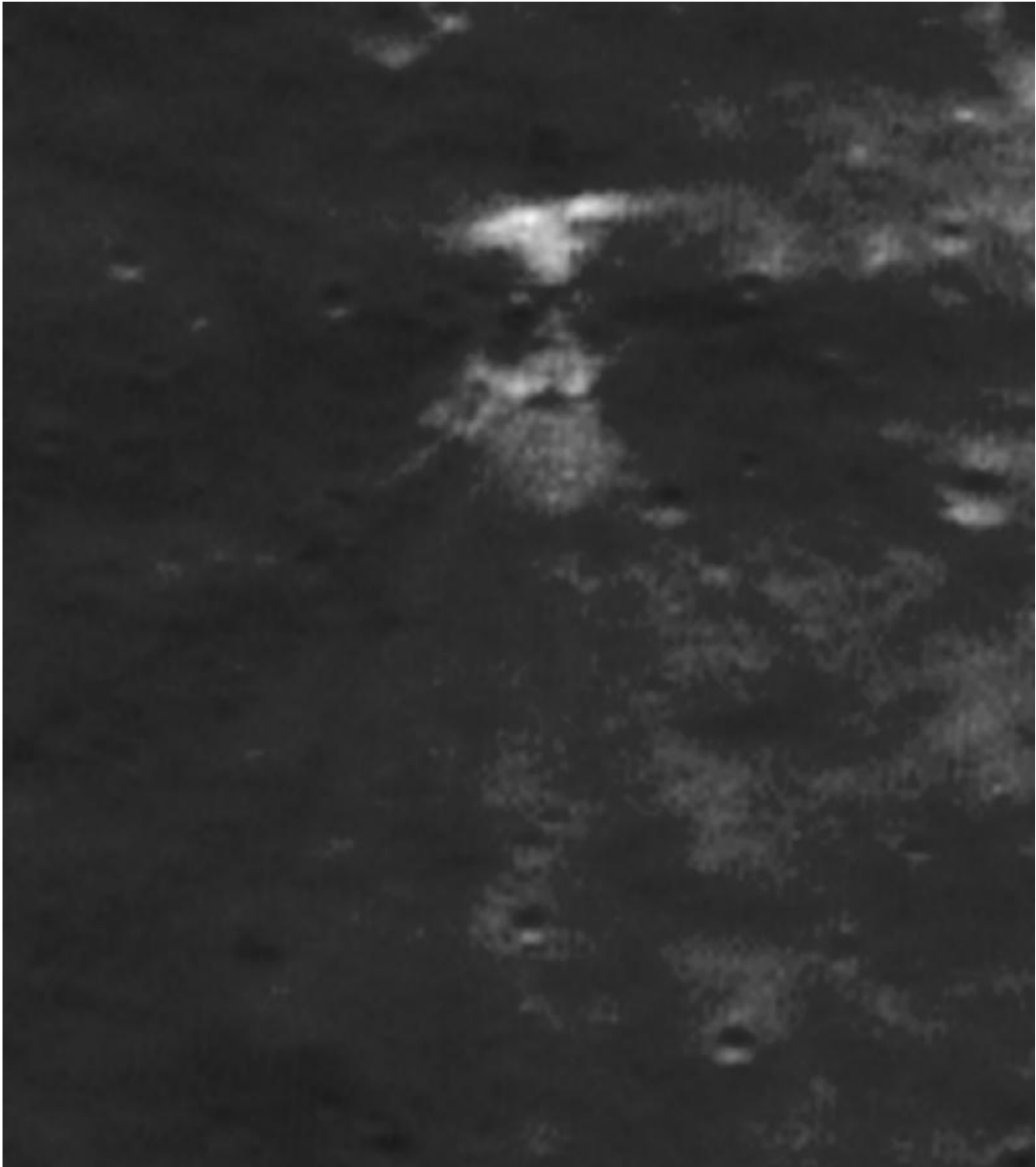
Discovery of SMART-1 impact site on high resolution Lunar Reconnaissance Orbiter images. The field is 50 metres wide (north is up). SMART-1 touched down from north to south at a grazing speed of 2 kilometres per second. This image, with west illumination, clearly shows a linear gouge of 15 metres length

in the surface. Credit: P Stooke/B Foing et al 2017/ NASA/GSFC/Arizona State University

Observations of the moon have revealed the final resting place of the European Space Agency's first lunar mission, SMART-1. The spacecraft was sent into a controlled impact with the lunar surface 11 years ago. Although an impact flash was imaged at the time by the Canada-France-Hawaii Telescope on the dark side of the boundary between night and day on the lunar surface, the exact location had not been identified until now. Results have been presented today at the European Planetary Science Congress (EPSC) 2017 in Riga.

ESA SMART-1 Project Scientist, Bernard Foing, says: "SMART-1 had a hard, grazing and bouncing landing at two kilometres per second on the surface of the moon. There were no other [spacecraft](#) in orbit at the time to give a close-up view of the impact, and finding the precise location became a 'cold case' for more than 10 years. For this 'Crash Scene Investigation', we used all possible Earth witnesses, observational facts and computer models to identify the exact site and have finally found the scars. The next steps will be to send a robotic investigator to examine the remains of the SMART-1 spacecraft body and 'wings' of the solar arrays."

The location is 34.262° south and 46.193° west, consistent with the coordinates of impact calculated initially. The SMART-1 impact site was discovered by Dr Phil Stooke, of Western University, Ontario, using high-resolution images from NASA's Lunar Reconnaissance Orbiter (LRO). The images show a linear gouge in the surface, about four metres wide and 20 metres long, cutting across a small pre-existing crater. At the far end, a faint fan of ejecta sprays out to the south.



Discovery of SMART-1 impact site on high resolution Lunar Reconnaissance Orbiter images. The field is 50 metres wide (north is up). SMART-1 touched down from north to south at a grazing speed of 2 kilometres per second. This image has sunlight shining along the gouge, so it has no clear shadows, but it

displays the fan of bear ejecta more clearly. Credit: P Stooke/B Foing et al 2017/ NASA/GSFC/Arizona State University

Foing said: "The high resolution LRO images show white ejecta, about seven metres across, from the first contact. A north-south channel has then been carved out by the SMART-1 spacecraft body, before its bouncing ricochet. We can make out three faint but distinct ejecta streams from the impact, about 40 metres long and separated by 20-degree angles."

Stooke said: "Orbit tracking and the impact flash gave a good estimate of the impact location, and very close to that point was a very unusual small feature. It now seems that impacts of orbiting spacecraft, seen here from SMART-1, and also in the cases from GRAIL and LADEE, will form elongated craters, most of whose rather faint ejecta extends downrange".

Prof Mark Burchell of the University of Kent, who performed laboratory impact experiments and simulated the SMART-1 grazing impact conditions, said: "It is exciting to see for the first time the real scars from the SMART-1 [impact](#), and compare them to the models and laboratory simulations."

Provided by Europlanet Media Centre

Citation: Crash scene investigation reveals resting place of SMART-1 impact (2017, September 25) retrieved 19 April 2024 from <https://phys.org/news/2017-09-scene-reveals-resting-smart-impact.html>

This document is subject to copyright. Apart from any fair dealing for the purpose of private study or research, no part may be reproduced without the written permission. The content is provided for information purposes only.